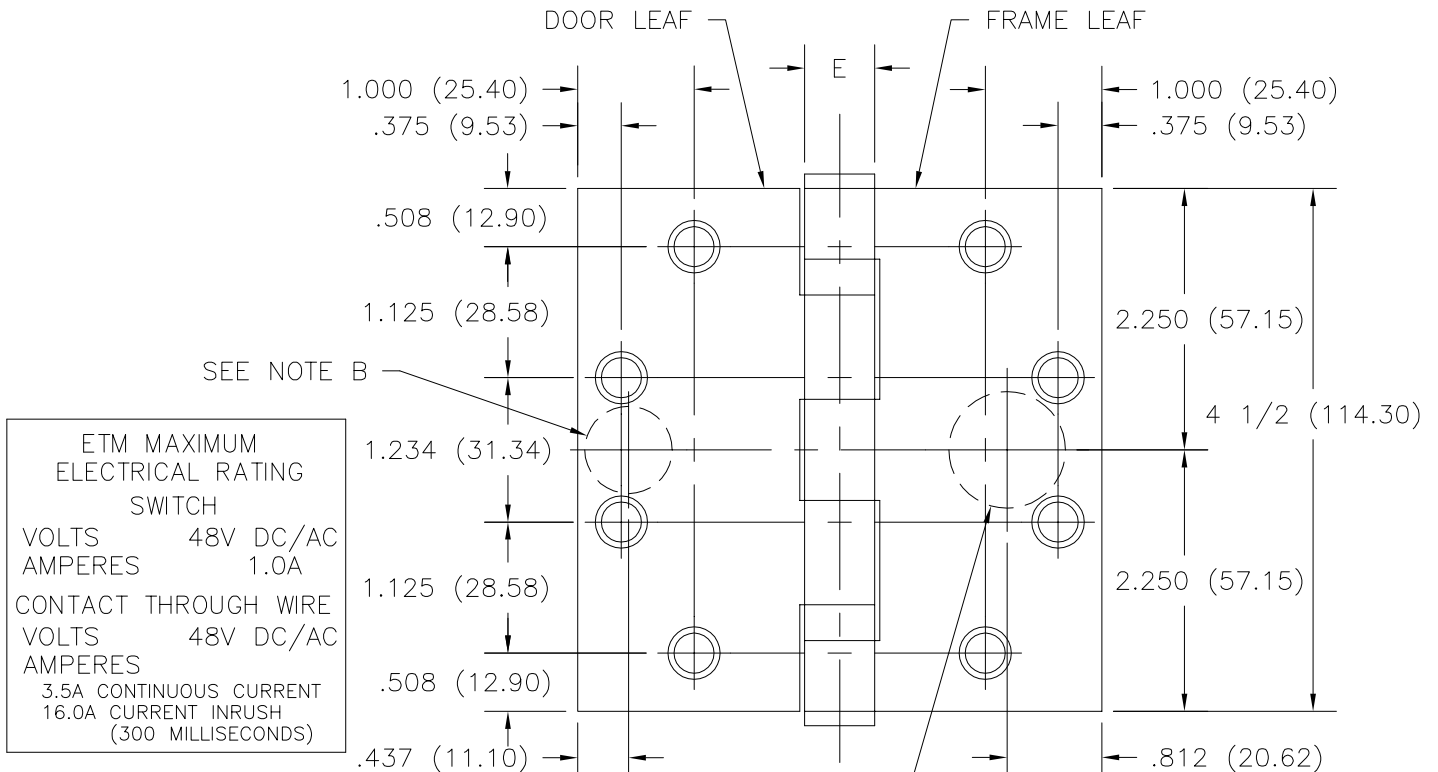


FULL MORTISE
 TEMPLATE HINGES
 ELECTRIC THROUGH WIRE
 AND MONITOR TYPE ETM

Template No. T523
 Rev. '96



SIZES: 4 1/2 x 4 -- 4 1/2 x 4 1/2
 (114.30 x 101.60) (114.30 x 114.30)

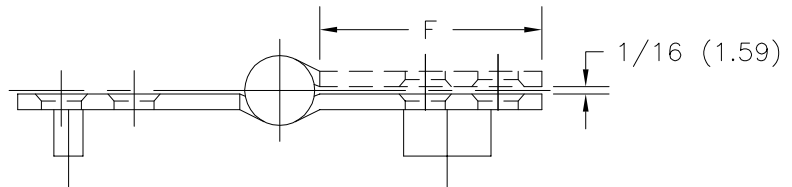


ETM MAXIMUM
 ELECTRICAL RATING
 SWITCH
 VOLTS 48V DC/AC
 AMPERES 1.0A
 CONTACT THROUGH WIRE
 VOLTS 48V DC/AC
 AMPERES
 3.5A CONTINUOUS CURRENT
 16.0A CURRENT INRUSH
 (300 MILLISECONDS)

DRILLING INSTRUCTIONS

NOTE A:
 DRILL AND DEBURR ϕ 1 (25.40)
 HOLE IN FRAME REINFORCEMENT
 FOR THROUGH WIRES.

NOTE B:
 DRILL AND DEBURR ϕ 3/4 (19.05)
 HOLE IN DOOR REINFORCEMENT
 FOR THROUGH WIRES.



-DO NOT SCALE-

CATALOG NUMBER		METAL GAUGE	(E) KNUCKLE DIAMETER	(F) DISTANCE FROM EDGE OF LEAF TO SWAGE LINE	
STEEL HINGES	NON-FERROUS HINGES			4 1/2 x 4 (114.30 x 101.60)	4 1/2 x 4 1/2 (114.30 x 114.30)
BB1279-ETM	BB1191-ETM	.134 (3.40)	39/64 (15.48)	1 5/8 (41.28)	1 7/8 (47.63)
BB1168-ETM	BB1199-ETM	.180 (4.57)	45/64 (17.86)	1 9/16 (39.69)	1 13/16 (46.04)

ALL NON-BRACKETED DIMENSIONS ARE IN INCHES, ALL BRACKETED DIMENSIONS ARE IN MILLIMETERS.

Machine Screw Size- 12-24 x 1/2" F.H.
 Wood Screw Size- No. 12 x 1 1/4" F.H.



NOTE: This hinge is intended to be used in the center position.

Hospital type and round corner template hinges conform to the above screw size and location. They are designated by "HT" and "RC" to catalog number.

Hager template hinges are made in size, gauge and with screw holes located to conform to ANSI-A156.7.

HAGER RESERVES THE RIGHT TO MAKE DESIGN CHANGES WITHOUT NOTICE. CALL HAGER ENGINEERING AT 1-800-325-9995 FOR LATEST REVISION DATE OF TEMPLATE.

HAGER COMPANIES
 139 VICTOR STREET
 P.O. BOX 12300
 ST. LOUIS, MISSOURI 63157-0300

Template No. T523