

**Finishes:**

- Black             Dark Brown  
 Tan                 White

**Sizes:**

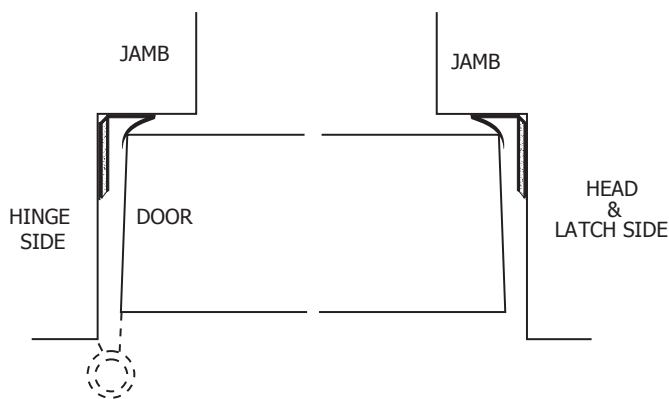
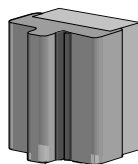
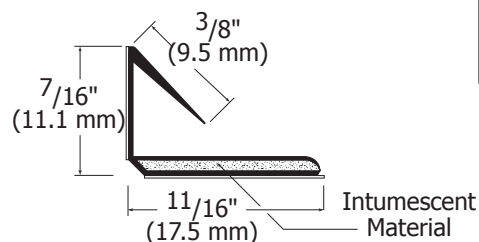
- 3' x 7' (.9 m x 2.1 m)                       4' x 7' (1.2 m x 2.1 m)  
 4' x 8' (1.2 m x 2.4 m)                       6' x 7' (1.8 m x 2.1 m)  
 8' x 9' (2.4 m x 2.7 m)                       Other \_\_\_\_\_



**"S"**

**73NN**

Manufactured-On Date



Hager's 719 Combination Smoke and Fire Seal has been designed to provide an effective smoke seal in the gap around doors. It is to be installed as illustrated around the perimeter of a door assembly or on the meeting stile of a pair of doors. Do not locate this product so that it impedes the opening or closing of the door. 1/8" (3.2 mm) clearance between door and frame is required. It is recommended to check the application of the door seal periodically to ensure the door assembly closes and latches properly, whether or not equipped with a closing device. Incorrect surface preparation may result in incomplete setting of the adhesive causing separation of the seal from the frame. It is recommended that installation take place after construction is completed, flooring material has been installed, and final cleaning has taken place. Do not store this product in extreme heat or cold or for prolonged periods of time. Care should be taken to install this product without stretching or damaging it in any way. The frame should be thoroughly cleaned to remove any dust, oil, dirt or other foreign material. The use of isopropyl alcohol is recommended. Cleansed surfaces should be allowed to dry thoroughly before application. For best results, apply when temperatures are between 50°F and 100°F (ideally between 65°F and 80°F). Certain paint products may cause poor adhesion. If necessary, lightly sand the painted surface and then thoroughly clean. Secure adhesion is crucial to the proper performance of this product.

1. Remove protective backing 1 foot at a time and apply in short sections using firm pressure.
2. Adhere seal to the exact location on frame or door. Do not remove and reposition.
3. Inspect to assure proper adhesion.
4. Do not locate this product so that it impedes the opening or closing of the door. The door assembly must operate effectively at all times.

719 Combination Smoke/Fire Seal has been approved as a Category G/Category H Edge Seal/Smoke Seal and Draft Control Gasket for use with Category B wood and plastic covered composite doors rated up to and including 1 hour and category B wood core doors rated 20 minutes fire tested without hose stream. When applied to the door and frame assembly in accordance with manufactures installation instructions, the assembly will comply with UBC 7-2 (1997) Part I & II. Also suitable as a Category J gasket for use with Listed steel frames and/or Classified steel covered composite, hollow metal doors rated up to and including 3 hours; wood and plastic covered composite doors rated up to and including 1-1/2 hours.