

# Trim & Auxiliary



At Hager Companies, we know all about the importance of adding the finishing touches to your building projects. That's why we're proud to offer more than 200 different trim & auxiliary door hardware products in a variety of designs, sizes, and finishes that not only look great, but also provide long-lasting wear in any application. Whatever you need, from pulls to push plates, protection plates to door edgings, wall and floor stops to flush bolts, coordinators, signage, and much more - Hager trim & auxiliary products give you great looks and proven durability.

## Table of Contents

General Information .....	2
Pulls .....	5
Flush Cup Pulls .....	23
Pull Plates.....	27
Push Plates .....	29
Push Bars .....	33
Push & Pull Bar Sets.....	36
Door Edgings & Corner Guards .....	41
Door Protection Plates .....	43
Wall Stops & Holders.....	44
Roller Stops .....	49
Floor Stops & Holders.....	50
Kick Down Door Stops.....	57
Surface Bolts .....	58
Flush Bolts & Coordinating Devices .....	59
Latches & Protection Plates.....	66
Coat Hooks .....	70
Pulls - Closet/Pocket/Sliding Door.....	72
Filler Plates.....	75
Signage .....	77
Miscellaneous .....	82
Residential .....	87

## GENERAL INFORMATION

### MANUFACTURING OPTIONS

Hager Companies can deliver custom door pulls made to your specifications, or choose from our collection of pull designs. Hager's comprehensive selection of door pull hardware includes standard push/pull bars or multiple push bar combinations with center-to-centers made to order.

### PUSH/PULL PLATE DETAILS

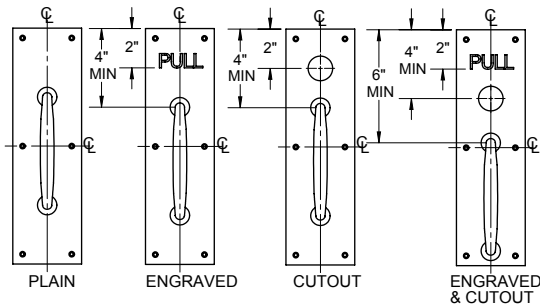
#### Standard Grip Positions

Pulls are centered vertically or lowered when necessary to meet minimum top spacing requirement. Be certain the pull selected will fit on specified plate under these conditions.

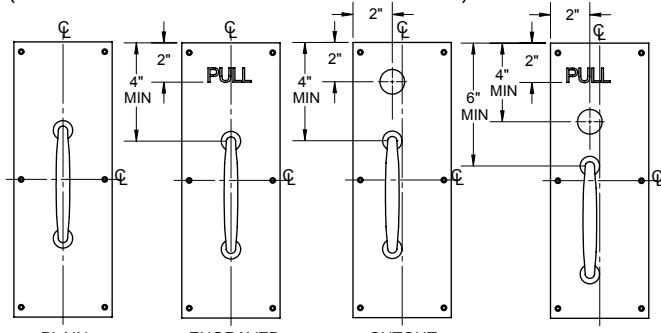
#### Special Pull Positions

Where pairs of doors are involved and active leaf pull plate is lettered or has a cutout, order pull plate for inactive leaf Grip To Align (WOC). This will ensure horizontal alignment of pull on both plates. Always furnish complete details when ordering non-standard pull positions.

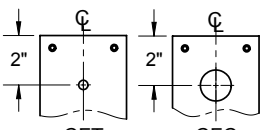
### PULL PLATES UP TO 4" WIDE



### PULL PLATES OVER 4" WIDE (HANDING REQUIRED WITH CUTOUTS)



### Cut Outs



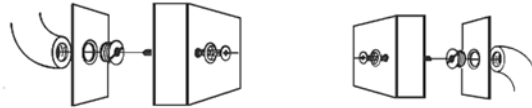
Standard cutout sizes: Cut for Cylinder (CFC) – 1 1/4" (32 mm) diameter; Cut for Thumbturn (CFT) – 3/8" (10 mm) diameter.

All plates may be ordered with cutout option by adding the appropriate suffix (i.e., 30S-CFC).

Standard cutouts are positioned 2" (51 mm) from top of plate where this option has been ordered. Cutouts are centered

on plates up to 4" (102 mm) wide or 2" (51 mm) from edge of plates over 4" (102 mm) wide. The latter are handed with cutouts. Furnish hand of door when ordering. Provide complete details for all non-standard cutouts.

### Flush Back Mounting



Pull plates using #3, 4, or 10 pull types can be furnished with a flush back (no projections). Specify code FB, (i.e., 33E-FB). Note: Use thru bolts supplied with mountings for best security.

### Back To Back Mounting

Many pulls may be ordered back to back (BTB) and availability will be noted on each particular product page (refer to product page). Specify the correct part number and center-to-center unless already specified.

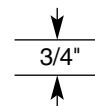
### Handicap Option

Pulls that must meet the 2-1/2" (64 mm) clearance for ADA requirements are available. Must specify part number with prefix "H" (i.e., H2E). Please refer to each individual part number for availability.

### Engraving

Typical engraved lettering is in Helvetica style. On push or pull plates, standard position is horizontal on a line 2" (51 mm) from top of plate.

### PUSH PULL





## GENERAL INFORMATION

### Fasteners

Illustrated below are various types of fasteners that can be furnished by Hager Companies. Please specify type of fastening desired. All types of fastening cannot be used with all items of hardware. If specified method is not possible, we reserve the right to furnish whatever type we feel is best suited for the installation. When used with tempered glass doors, specify thickness of glass and hole diameter. Fasteners are standard for 1-3/4" doors. Other door thicknesses are optional.



**Sex bolt and machine screws**  
(various sizes)



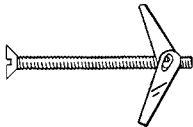
**Lead anchor**  
(used with floor stops in masonry applications)



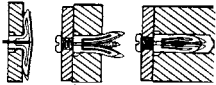
**Plastic anchor and full threaded screw**  
(used in drywall or masonry applications)



**Lag screw and shield**



**Toggle bolt**  
(ideal for drywall applications)



**Plastic toggle anchor**  
(used with wall stops in drywall applications)



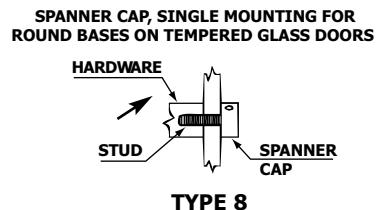
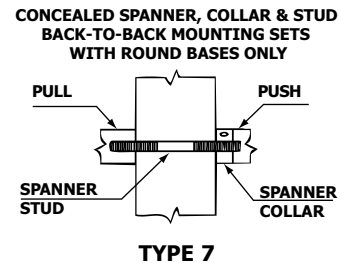
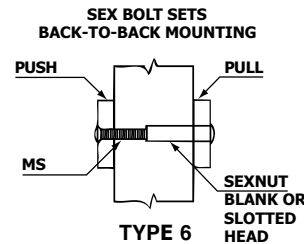
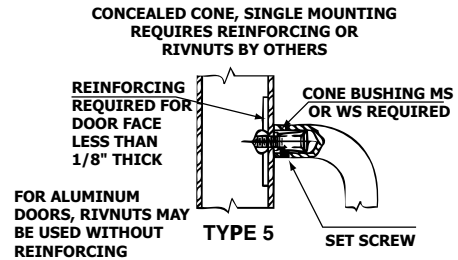
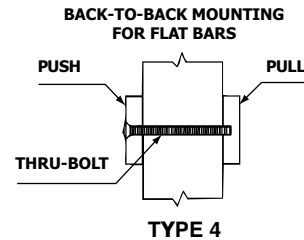
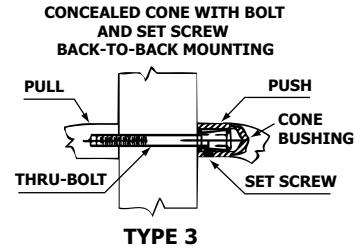
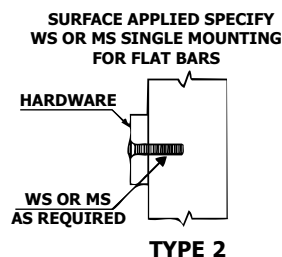
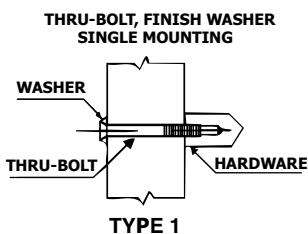
**Thru-bolt and finish washer**  
(flat or oval head; size as required)



**Spanner head machine screws**  
(various sizes furnished at extra charge)



**Security torx head machine screws**  
(various sizes furnished at extra charge)



## GENERAL INFORMATION

### METAL FINISH SYMBOLS

US & Hager	Description	Base Material	BHMA Symbol
2C	Zinc Plated Steel	Steel	603
3	Bright Brass	Brass	605
4	Satin Brass	Brass	606
5	Satin Brass, Oxidized	Brass/Bronze	609
9	Bright Bronze	Brass/Bronze	611
10	Satin Bronze	Brass/Bronze	612
10B	Antique Bronze, Oiled	Brass/Bronze	613
10R	Matte Lacquer Antique Bronze	Brass/Bronze	-
15	Satin Nickel	Brass/Bronze	619
15A	Satin Nickel Oxidized	Brass/Bronze	620
19	Flat Black Coated	Any	-
26	Bright Chromium Plated	Brass/Bronze	625
26D	Satin Chromium Plated	Brass/Bronze	626
28	Satin Anodized Aluminum	Aluminum	628
32	Stainless Steel Metal, Bright	300 Series	629
32D	Stainless Steel Metal, Satin	300 Series	630
L2	Duro	-	-
PC	Clear Plastic	-	-
PK	Plastic Laminate - Black	-	-
CO	Plastic Laminate - Chocolate	-	-
PG	Plastic Laminate - Grey	-	-
S1	Sprayed Aluminum	Cast Iron	-
S2	Sprayed Brass	Cast Iron	-
S3	Sprayed Bronze	Cast Iron	-
DBZ	Painted	Any	695

Note: For any finish not listed in this catalog, or explained above, availability on request.

### ANTIMICROBIAL PROTECTION

Hager Companies' full line of US32D stainless steel door pulls, push bars, push plates, and pull plates are available with AgION antimicrobial protection.

Hager uses a powder coat process to apply the antimicrobial treated coating to guarantee durability and protection. Antimicrobial resistance on products is affected by moisture in the air. Silver ions interact with humidity and are released creating a cleaner surface. The suppression of bacteria, mold and fungi is as easy as adding antimicrobial treated coating to your Hager products.

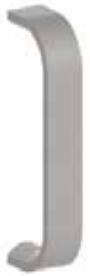
### Antimicrobial Vital Stats

- US32D stainless steel
- EPA registered
- NSF approved
- FDA listed for food contact
- Designate your product with: MV3 for Trim & Auxiliary





## PULLS



### 1

#### Modified Half Round Wrought Door Pull

- Certification: Meets ANSI A156.6 for J401 Pulls  
 Base: 1/2" x 1" (13 mm x 25 mm)  
 Projection: 2" (51 mm)  
 Clearance: 1-1/2" (38 mm)  
 Door Thickness: 1-3/4" (45 mm) - Standard  
 Materials: Aluminum, brass, bronze, stainless steel  
 Finishes: US3, US4, US10, DBZ, US19, US26, US26D, US28, US32,  
 Fasteners: US32D Two (2) 1/4-20 x 2-1/4" FPHMS with finish washers  
 Handicap:
  - 2-1/2" (64 mm) clearance available on special orders
  - Add prefix "H" to number (i.e., H1E)
 Options:
  - May be combined with a plate to make a pull plate
  - Other centers on special order
 Notes:
  - For sizes or finishes not listed in this catalog, contact Hager Customer Service for availability
  - Not suitable for back to back mounting

CTC Length	1E	1G	1J	1L
Inches	6	8	10	12
Millimeters	152	203	254	305



### 2

#### Rectangular Wrought Door Pull

- Certification: Meets ANSI A156.6 for J401 Pulls  
 Base: 3/8" x 1-1/4" (10 mm x 32 mm)  
 Projection: 2" (51 mm)  
 Clearance: 1-5/8" (41 mm)  
 Door Thickness: 1-3/4" (45 mm) - Standard  
 Materials: Aluminum, brass, bronze, stainless steel  
 Finishes: US3, US4, US10, DBZ, US19, US26, US26D, US28, US32, US32D  
 Fasteners: Two (2) 1/4-20 x 2-1/4" FPHMS with finish washers  
 Handicap:
  - 2-5/8" (63.5 mm) clearance available on special orders
  - Add prefix "H" to number (i.e., H2E)
 Options:
  - May be combined with a plate to make a pull plate
  - Other centers on special order
 Notes:
  - For sizes or finishes not listed in this catalog, contact Hager Customer Service for availability
  - Not suitable for back to back mounting

CTC Length	2E	2G	2J	2L
Inches	6	8	10	12
Millimeters	152	203	254	305



### 3

#### Round Wrought Door Pull

- Certification: Meets ANSI A156.6 for J401 Pulls  
 Base Diameter: 3/4" (19 mm)  
 Projection: 2-1/4" (57 mm)  
 Clearance: 1-1/2" (38 mm)  
 Door Thickness: 1-3/4" (45 mm) - Standard  
 Materials: Aluminum, brass, bronze, stainless steel  
 Finishes: US3, US4, US10, DBZ, US19, US26, US26D, US28, US32, US32D  
 Fasteners: Two (2) 1/4-20 x 2-1/4" FPHMS with finish washers  
 Handicap:
  - 2-1/2" (64 mm) clearance available on special orders
  - Add prefix "H" to number (i.e., H3E)
 Notes:
  - For sizes or finishes not listed in this catalog, contact Hager Customer Service for availability
  - May be combined with a plate to make a pull plate
  - Other centers on special order
  - If ordered with tempered glass, specify glass thickness and hole size
  - Back to back - see model 13

CTC Length	3E	3G	3J	3L
Inches	6	8	10	12
Millimeters	152	203	254	305



**PULLS**



**4**  
**Round Wrought Door Pull**

Certification: Meets ANSI A156.6 for J401 Pulls  
 Base Diameter: 1" (25 mm)  
 Projection: 2-3/4" (70 mm)  
 Clearance: 1-3/4" (45 mm)  
 Door Thickness: 1-3/4" (45 mm) - Standard  
 Materials: Aluminum, brass, bronze, stainless steel  
 Finishes: US3, US4, US10, DBZ, US19, US26, US26D, US28, US32, US32D  
 Fasteners: Two (2) 1/4-20 x 2-1/4" FPHMS with finish washers  
 Handicap:

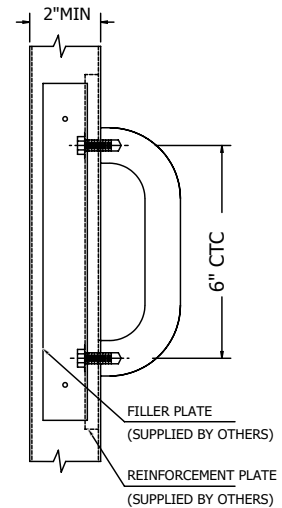
CTC Length	4E	4G	4H	4J	4L
Inches	6	8	9	10	12
Millimeters	152	203	229	254	305

- Notes:
- 2-1/2" (64 mm) clearance available on special orders
  - Add prefix "H" to number (i.e., H4E)
  - For sizes or finishes not listed in this catalog, contact Hager Customer Service for availability
  - May be combined with a plate to make a pull plate
  - Other centers on special order
  - If ordered with tempered glass, specify glass thickness and hole size
  - Back to back - see model 14



**P4E**  
**Security Pull**

Certification: Meets ANSI A156.6 for J401 Pulls  
 Base: 1" (25 mm) diameter  
 Projection: 2-1/4" (57 mm)  
 Clearance: 1-1/4" (32 mm)  
 CTC Length: 6" (152 mm)  
 Material: Stainless steel  
 Finish: US32D  
 Fasteners: Two (2) 3/8-16 x 1-1/4" "NYLOC" hex head cap screws  
 Notes:



- For metal doors
- Requires reinforcing plate with an access plate and Torx screws for door edge



**T4E**  
**Security Pull**

Certification: Meets ANSI A156.6 for J401 Pulls  
 Base: 1" (25 mm) diameter  
 Projection: 2-1/4" (57 mm)  
 Clearance: 1-1/4" (32 mm)  
 Door Thickness: 1-3/4" (45 mm) - Standard  
 CTC Length: 6" (152 mm)  
 Material: Stainless steel  
 Finish: US32D  
 Fasteners: Two (2) 1/4-20 x 2-1/4" FTXMS with finish washers





## PULLS



### 5D

#### Round Wrought Door Pull

- Certification: Meets ANSI A156.6 for J401 Pulls  
 Base Diameter: 5/8" (16 mm)  
 Projection: 2-1/8" (54 mm)  
 Clearance: 1-1/2" (38 mm)  
 CTC Length: 5-1/2" (140 mm)  
 Door Thickness: 1-3/4" (45 mm) - Standard  
 Materials: Aluminum, brass, bronze, stainless steel  
 Finishes: US3, US4, US10, DBZ, US19, US26, US26D, US28, US32, US32D  
 Fasteners: Two (2) 1/4-20 x 2-1/4" FPHMS with finish washers  
 Handicap:
  - 2-1/2" (64 mm) clearance available on special orders
  - Add prefix "H" to number (i.e., H5D)
 Notes:
  - For sizes or finishes not listed in this catalog, contact Hager Customer Service for availability
  - May be combined with a plate to make a pull plate
  - If ordered with tempered glass, specify glass thickness and hole size
  - Not suitable for back to back mounting



### 5N

#### Cast Pull

- Certification: Meets ANSI A156.6 for J401 Pulls  
 O/A Height: 6-1/8" (155.6 mm)  
 Base: 5/8" x 1-3/16" (16 mm x 30 mm)  
 Projection: 1-15/16" (49.2 mm)  
 Clearance: 1-7/16" (36.5 mm)  
 CTC Length: 5-1/2" (139.7 mm)  
 Door Thickness: 1-3/4" (45 mm) - Standard  
 Materials: Aluminum, brass, bronze, stainless steel  
 Finishes: US3, US4, US10, DBZ, US19, US26, US26D, US28, US32D  
 Fasteners: Two (2) 1/4-20 x 2-1/4" FPHMS with finish washers  
 Options: May be combined with a plate to make a pull plate Not suitable for  
 Notes: back to back mounting



### 6N

#### Cast Pull

- Certification: Meets ANSI A156.6 for J401 Pulls  
 O/A Height: 6-1/2" (165.1 mm)  
 Base Diameter: 1" (25 mm)  
 Projection: 1-7/8" (47.6 mm)  
 Clearance: 1-3/8" (34.9 mm)  
 CTC Length: 5-1/2" (139.7 mm)  
 Door Thickness: 1-3/4" (45 mm) - Standard  
 Materials: Aluminum, brass, bronze, stainless steel  
 Finishes: US3, US4, US10, DBZ, US19, US26, US26D, US28, US32D  
 Fasteners: Two (2) 1/4-20 x 2-1/4" FPHMS with finish washers  
 Options: May be combined with a plate to make a pull plate Not suitable for  
 Notes: back to back mounting



## PULLS



### 7N

#### Cast Pull

Certification: Meets ANSI A156.6 for J401 Pulls  
O/A Height: 7-1/2" (190.5 mm)  
Base Diameter: 2" (51 mm)  
Projection: 1-7/8" (47.6 mm)  
Clearance: 1-3/8" (34.9 mm)  
CTC Length: 5-1/2" (139.7 mm)  
Door Thickness: 1-3/4" (45 mm) - Standard  
Materials: Aluminum, brass, bronze  
Finishes: US3, US4, US10, US19, US26, US26D, US28  
Fasteners: Two (2) 1/4-20 x 2-1/4" FPHMS with finish washers  
Options: May be combined with a plate to make a pull plate  
Notes: Not suitable for back to back mounting



### 8N

#### Cast Pull

Certification: Meets ANSI A156.6 for J401 Pulls  
O/A Height: 7-1/2" (190.5 mm)  
Base Diameter: 2" (51 mm)  
Projection: 1-7/8" (47.6 mm)  
Clearance: 1-3/8" (34.9 mm)  
CTC Length: 5-1/2" (139.7 mm)  
Materials: Aluminum, brass, bronze  
Finishes: US3, US4, US10, US19, US26, US26D, US28 Six (6)  
Fasteners: #8 x 1" OPHWS  
Notes: Not suitable for back to back mounting



### P8N

#### Cast Pull

Certification: Meets ANSI A156.6 for J401 Pulls  
O/A Height: 8 - 3/4" (222 mm)  
Base: 1-1/2" x 1-5/8" (38 mm x 41 mm)  
Projection: 2-1/4" (57 mm)  
Clearance: 1-9/16" (40 mm)  
CTC Length: 7-3/4" (197 mm)  
Materials: Brass  
Finishes: US4, US26D  
Fasteners: Two (2) 3/8-16 x 3/4" FPHMS  
Options: Security Torx screws available  
Notes: Not suitable for back to back mounting







## PULLS



### 9

#### Oval Wrought Door Pull

- Certification: Meets ANSI A156.6 for J401 Pulls  
 Base: 1/2" x 3/4" (13 mm x 19 mm)  
 Projection: 2" (51 mm)  
 Clearance: 1-1/2" (38 mm)  
 Door Thickness: 1-3/4" (45 mm) - Standard  
 Materials: Brass, bronze, stainless steel  
 Finishes: US3, US4, US10, DBZ, US19, US26, US26D, US32, US32D  
 Fasteners: Two (2) 1/4-20 x 2-1/4" FPHMS with finish washers  
 Handicap:
  - 2-1/2" (64 mm) clearance available on special orders
  - Add prefix "H" to number (i.e., H9E)
 Options:
  - May be combined with a plate to make a pull plate
  - Other centers on special order
 Notes:
  - For sizes or finishes not listed in this catalog, contact Hager Customer Service for availability
  - Not suitable for back to back mounting

CTC Length	9E	9G	9J	9L
Inches	6	8	10	12
Millimeters	152	203	254	305



### 10

#### Round Pull

- Certification: Meets ANSI A156.6 for J401 Pulls  
 Base Diameter: 1-1/4" (32 mm)  
 Projection: 3" (76 mm)  
 Clearance: 1-3/4" (45 mm)  
 Door Thickness: 1-3/4" (45 mm) - Standard  
 Materials: Aluminum, brass, bronze, stainless steel  
 Finishes: US3, US4, US10, DBZ, US19, US26, US26D, US28, US32, US32D  
 Fasteners: Two (2) 5/16-18 FPHMS with finish washers  
 Handicap:
  - 2-1/2" (64 mm) clearance available on special orders
  - Add prefix "H" to number (i.e., H10L)
 Options:
  - May be combined with a plate to make a pull plate
  - Other centers on special order
  - If ordered with tempered glass, specify glass thickness and hole size
 Notes:
  - For sizes or finishes not listed in this catalog, contact Hager Customer Service for availability
  - Back to back - see model 20

CTC Length	10L	10Q
Inches	12	18
Millimeters	305	457



### 11

#### Round Offset Pull

- Certification: Meets ANSI A156.6 for J402 Pulls  
 Base Diameter: 3/4" (19 mm)  
 Projection: 2-1/2" (64 mm)  
 Offset: 2-1/2" (64 mm); 90° Standard  
 Clearance: 1-3/4" (45 mm)  
 Door Thickness: 1-3/4" (45 mm) - Standard  
 Materials: Aluminum, brass, bronze, stainless steel  
 Finishes: US3, US4, US10, DBZ, US19, US26, US26D, US28, US32, US32D  
 Fasteners: Two (2) 5/16-18 x 2-1/4" FPHMS with finish washers  
 Handicap:
  - 2-1/2" (64 mm) clearance available on special orders
  - Add prefix "H" to number (i.e., H11E)
 Options:
  - For 45° offset, add prefix "X" to number (i.e., X11E)
  - Other centers available on special orders
  - If ordered with tempered glass, specify glass thickness and hole size
 Notes:
  - For sizes or finishes not listed in this catalog, contact Hager Customer Service for availability
  - Back to back - see model 21

CTC Length	11E	11G	11J	11L
Inches	6	8	10	12
Millimeters	152	203	254	305



**PULLS**



**12  
Round Offset Pull**

Certification: Meets ANSI A156.6 for J402 Pulls  
 Base Diameter: 1" (25 mm)  
 Projection: 2-3/4" (70 mm)  
 Offset: 3" (76 mm); 90° Standard  
 Clearance: 1-3/4" (45 mm)  
 Door Thickness: 1-3/4" (45 mm) - Standard  
 Materials: Aluminum, brass, bronze, stainless steel  
 Finishes: US3, US4, US10, DBZ, US19, US26, US26D, US28, US32, US32D  
 Fasteners: Two (2) 5/16-18 x 2-1/4" FPHMS with finish washers  
 Handicap:
 

- 2-1/2" (64 mm) clearance available on special orders
- Add prefix "H" to number (i.e., H12G)
- For 45° offset, add prefix "X" to number (i.e., X12G)
- Other centers available on special orders
- If ordered with tempered glass, specify glass thickness and hole size

 Options:
 

- For sizes or finishes not listed in this catalog, contact Hager Customer Service for availability

 Notes:

CTC Length	12G	12J	12L
Inches	8	10	12
Millimeters	203	254	305



**13  
Round Wrought Door Push/Pull Set**

Certification: Meets ANSI A156.6 for J401 Pulls  
 Base Diameter: 3/4" (19 mm)  
 Projection: 2-1/4" (57 mm)  
 Clearance: 1-1/2" (38 mm)  
 Door Thickness: 1-3/4" (45 mm) - 2-1/8" (54 mm) Standard  
 Materials: Aluminum, brass, bronze, stainless steel  
 Finishes: US3, US4, US10, DBZ, US19, US26, US26D, US28, US32, US32D  
 Notes:
 

- Type 7 mounting - Standard
- Consists of two (2) pulls back to back
- For sizes or finishes not listed in this catalog, contact Hager Customer Service for availability
- Supplied with two (2) 1/4" dia. threaded studs, spanner collar, and spanner wrench

CTC Length	13E	13G	13J	13L
Inches	6	8	10	12
Millimeters	152	203	254	305



**14  
Round Wrought Door Push/Pull Set**

Certification: Meets ANSI A156.6 for J401 Pulls  
 Base Diameter: 1" (25 mm)  
 Projection: 2-3/4" (70 mm)  
 Clearance: 1-3/4" (45 mm)  
 Door Thickness: 1-3/4" (45 mm) - 2-1/8" (54 mm) Standard  
 Materials: Aluminum, brass, bronze, stainless steel  
 Finishes: US3, US4, US10, DBZ, US19, US26, US26D, US28, US32, US32D  
 Notes:
 

- Type 7 mounting - Standard
- Consists of two (2) pulls back to back
- For sizes or finishes not listed in this catalog, contact Hager Customer Service for availability
- Supplied with two (2) 1/4" dia. threaded studs, spanner collar, and spanner wrench

CTC Length	14G	14H	14J	14L
Inches	8	9	10	12
Millimeters	203	229	254	305





## PULLS



### 19N

#### Cast Pull

Certification: Meets ANSI A156.6 for J401 Pulls  
 O/A Height: 9" (229 mm)  
 Base Diameter: 1-1/2" (38 mm)  
 Projection: 3-1/8" (79 mm)  
 CTC Length: 6-3/16" (132 mm)  
 Materials: Brass  
 Finishes: US3, US10, DBZ, US26, US26D  
 Fasteners: Four (4) #8 x 1" OPHWS  
 Notes: Suitable for back to back mounting with sex nuts by special quotation  
 Clearance: 1-11/16" (43 mm)



### 20

#### Round Push/Pull Set

Certification: Meets ANSI A156.6 for J401 Pulls  
 Base Diameter: 1-1/4" (32 mm)  
 Projection: 3" (76 mm)  
 Clearance: 1-3/4" (45 mm)  
 Door Thickness: 1-3/4" (45 mm) - 2-1/8" (54 mm) Standard  
 Materials: Brass, bronze, stainless steel  
 Finishes: US3, US4, US10, DBZ, US26, US26D, US28, US32, US32D  
 Notes:

CTC Length	20L	20Q
Inches	12	18
Millimeters	305	457

- Type 7 mounting - Standard
- Consists of two (2) pulls back to back
- For sizes or finishes not listed in this catalog, contact Hager Customer Service for availability
- Supplied with two (2) 5/16" dia. threaded studs, spanner collar, and spanner wrench



### 20N

#### Cast Pull

Certification: Meets ANSI A156.6 for J401 Pulls  
 O/A Height: 8-3/4" (222 mm)  
 Base Diameter: 1-1/2" (38 mm)  
 Projection: 3-1/4" (83 mm)  
 CTC Length: 5-7/32" (132.5 mm)  
 Door Thickness: 1-3/4" - Standard  
 Material: Bronze  
 Finishes: US3, US10, US26, US26D  
 Fasteners: Two (2) 1/4 - 20 x 2-3/16" undercut FPHMS with finish washers  
 Clearance: 1-11/16" (43 mm)



### 21

#### Round Offset Push/Pull Set

Certification: Meets ANSI A156.6 for J402 Pulls  
 Base Diameter: 3/4" (19 mm)  
 Projection: 2-1/2" (64 mm)  
 Clearance: 1-3/4" (45 mm)  
 Offset: 2-1/2" (64); 90° - Standard  
 Door Thickness: 1-3/4" (45 mm) - 2-1/8" (54 mm) Standard  
 Materials: Aluminum, brass, bronze, stainless steel  
 Finishes: US3, US4, US10, DBZ, US26, US26D, US28, US32, US32D  
 Notes:

CTC Length	21E	21G	21J	21L
Inches	6	8	10	12
Millimeters	152	203	254	305

- Type 7 mounting - Standard
- Consists of two (2) pulls back to back
- Available with 45 degree offset
- For sizes or finishes not listed in this catalog, contact Hager Customer Service for availability
- Supplied with two (2) 1/4" dia. threaded studs, spanner collar, and spanner wrench



**PULLS**



**22**

**Round Offset Push/Pull Set**

Certification: Meets ANSI A156.6 for J402 Pulls  
 Base Diameter: 1" (25 mm)  
 Projection: 2-3/4" (70 mm)  
 Clearance: 1-3/4" (45 mm)  
 Door Thickness: 1-3/4" (45 mm) - 2-1/18" (54 mm) Standard  
 Offset: 3" (76 mm); 90° standard  
 Materials: Aluminum, brass, bronze, stainless steel  
 Finishes: US3, US4, US10, DBZ, US26, US26D, US28, US32, US32D  
 Notes:

- Type 7 mounting - Standard
- Consists of two (2) pulls back to back
- Available with 45 degree offset
- For sizes or finishes not listed in this catalog, contact Hager Customer Service for availability
- Supplied with two (2) 1/4" dia. threaded studs, spanner collar, and spanner wrench

CTC Length	22G	22J	22L
Inches	8	10	12
Millimeters	203	254	305



**23Q**

**Round Offset Pull**

Certification: Meets ANSI A156.6 for J402 Offset Pulls  
 Base Diameter: 1-1/4" (32 mm)  
 Projection: 3" (76 mm)  
 Clearance: 1-3/4" (45 mm)  
 Offset: 3-3/4" (96 mm); 90° Standard  
 Door Thickness: 1-3/4" (45 mm) - Standard  
 CTC Length: 18" (457 mm)  
 Materials: Aluminum, brass, bronze, stainless steel  
 Finishes: US3, US4, US10, DBZ, US26, US26D, US28, US32, US32D  
 Fasteners: 5/16-18 x 2-1/4" FPHMS with finish washers  
 Handicap:

- 2-1/2" (64 mm) clearance available on special orders
  - Add prefix "H" to number (i.e., H23Q)
- Options: For 45° offset, substitute "X" for first digit (i.e., X23Q)
- Notes:
- If ordered with tempered glass, specify glass thickness and hole size
  - For sizes or finishes not listed in this catalog, contact Hager Customer Service for availability



**24Q**

**Round Offset Push/Pull Set**

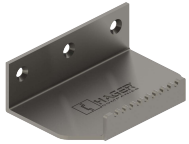
Certification: Meets ANSI A156.6 for J402 Offset Pulls  
 Base Diameter: 1-1/4" (32 mm)  
 Projection: 3" (76 mm)  
 Clearance: 1-3/4" (45 mm)  
 Offset: 3-3/4" (95 mm); 90° standard  
 Door Thickness: 1-3/4" (45 mm) - 2-1/18" (54 mm) Standard  
 CTC Length: 18" (457 mm)  
 Materials: Aluminum, brass, bronze, stainless steel  
 Finishes: US3, US4, US10, DBZ, US26, US26D, US28, US32, US32D  
 Notes:

- Type 7 mounting - Standard
- Consists of two (2) pulls back to back
- Available with 45 degree offset
- For sizes or finishes not listed in this catalog, contact Hager Customer Service for availability
- Supplied with two (2) 5/16" dia. threaded studs, spanner collar, and spanner wrench





## PULLS



### **190L**

#### **Foot Pull**

Projection:

3" (76.2 mm)

Door Thickness:

1-3/4" Standard

Material:

Stainless Steel, Steel

Finish:

US10B, US32D, BLK

Fasteners:

Three (3) #12 screws x 1.5" FPHSW

Three (3) #12-24 sex nuts with 1-9/16" barrel for 1-3/4" door

Three (3) #12-24 x 1.0" FPHMS



## PULLS



### 910P | 910B

#### Offset Mounting Vertical Pull

Pull Diameter:	1-1/4" (32 mm)
O/A Length:	36" (914 mm), 72" (1829 mm)
CTC Lengths:	20" (508 mm), 56" (1422 mm)
Materials:	Aluminum, brass, bronze, 316 stainless steel tubing
Finishes:	US3, US4, US10, US10B, US15A, US26, US26D, US28, US32D
Fasteners:	Two (2) 3/8-16 FPHMS with finish washers
Notes:	<ul style="list-style-type: none"> <li>• 910B is same as 910P with fasteners for back to back mounting</li> <li>• For sizes or finishes not listed in this catalog, contact Hager Customer Service for availability</li> </ul>
Clearance:	1-1/2" (38 mm)
Projection:	2-3/4" (70 mm)
Offset:	1-5/8" (41 mm)



### 915P | 915B

#### Straight Mounting Vertical Pull

Pull Diameter:	1-1/4" (32 mm)
O/A Length:	36" (914 mm), 72" (1829 mm)
CTC Lengths:	20" (508 mm), 56" (1422 mm)
Materials:	Aluminum, brass, bronze, 316 stainless steel tubing
Finishes:	US3, US4, US10, US10B, US15A, US26, US26D, US28, US32D
Fasteners:	Two (2) 3/8-16 FPHMS w/ finish washers
Notes:	<ul style="list-style-type: none"> <li>• 915B is same as 915P with fasteners for back to back mounting</li> <li>• For sizes or finishes not listed in this catalog, contact Hager Customer Service for availability</li> </ul>
36" and 20"	
Clearance:	2" (51 mm)
Projection:	3-1/4" (83 mm)
72" and 56"	
Clearance:	1-1/2" (38 mm)
Projection:	2-3/4" (70 mm)



## PULLS



### 920P | 920B

#### C-Shaped Pull

Base Diameter:	1" (25 mm)
Clearance:	1-3/4" (45 mm)
Projection:	2-1/4" (57 mm)
CTC Length:	8-1/2" (217 mm)
Materials:	Aluminum, brass, bronze, stainless steel
Finishes:	US3, US4, US10, US10B, US15A, US26, US26D, US28, US32D
Fasteners:	Two (2) 3/8-16 FPHMS with finish washers
Notes:	<ul style="list-style-type: none"><li>• 920B is pair of 920P with fasteners for back to back mounting</li><li>• For sizes or finishes not listed in this catalog, contact Hager Customer Service for availability</li></ul>



### 921P | 921B

#### C-Shaped Pull

Clearance:	1-1/2" (38 mm)
Offset:	8-1/2" (216 mm)
Projection:	2-1/8" (54 mm)
CTC Length:	17-1/2" (446 mm)
Materials:	Brass, bronze, stainless steel
Finishes:	US3, US4, US10, US10B, US15A, US26, US26D, US32D
Fasteners:	Two (2) 3/8-16 FPHMS with finish washers
Notes:	<ul style="list-style-type: none"><li>• 921B is pair of 921P with fasteners for back to back mounting</li><li>• For sizes or finishes not listed in this catalog, contact Hager Customer Service for availability</li></ul>



### 922P | 922B

#### C-Shaped Pull - Continuous

Pull Diameter:	1" (25 mm)
Projection:	2-1/2" (64 mm)
CTC Lengths:	10" (254 mm), 12" (305 mm)
Clearance:	1-1/2" (38 mm)
Materials:	Aluminum, brass, bronze, stainless steel
Finishes:	US3, US4, US10, US10B, US15A, US26, US26D, US28, US32D
Fasteners:	Two (2) 3/8-16 FPHMS with finish washers
Notes:	<ul style="list-style-type: none"><li>• 922B is pair of 922P with fasteners for back to back mounting</li><li>• For sizes or finishes not listed in this catalog, contact Hager Customer Service for availability</li></ul>



### 923P | 923B

#### C-Shaped Pull - Flanged

Pull Diameter:	1" (25 mm)
Projection:	2-3/4" (70 mm)
CTC Lengths:	10" (254 mm), 12" (305 mm)
Clearance:	1-3/4" (44 mm)
Base Diameter:	3/4" (19 mm)
Materials:	Aluminum, brass, bronze, stainless steel
Finishes:	US3, US4, US10, US10B, US15A, US26, US26D, US28, US32D
Fasteners:	Two (2) 3/8-16 FPHMS with finish washers
Notes:	<ul style="list-style-type: none"><li>• 923B is pair of 923P with fasteners for back to back mounting</li><li>• For sizes or finishes not listed in this catalog, contact Hager Customer Service for availability</li></ul>





## PULLS



### 924P | 924B C-Shaped Pull

- Projection: 2-1/2" (64 mm)  
 CTC Length: 14" (356 mm)  
 Clearance: 1-1/2" (38 mm)  
 Offset: 6-1/2" (165 mm)  
 Materials: Brass, bronze, stainless steel  
 Finishes: US3, US4, US10B, US15A, US26, US26D, US32D  
 Fasteners: Two (2) 3/8-16 FPHMS with finish washers  
 Notes:
  - 924B is pair of 924P with fasteners for back to back mounting
  - For sizes or finishes not listed in this catalog, contact Hager Customer Service for availability



### 926P | 926B Curved Pull

- Base Diameter: 1-1/4" (32 mm)  
 Projection: 3" (76 mm)  
 Clearance: 1-13/16" (46 mm)  
 Offset: 5-9/32" (134 mm)  
 Pull Diameter: 1-3/16" (30 mm)  
 CTC Length: 12" (305 mm)  
 Materials: Brass, bronze  
 Finishes: US3, US4, US10, US10B  
 Fasteners: Two (2) 3/8-16 FPHMS with finish washers  
 Notes:
  - 926B is pair of 926P with fasteners for back to back mounting
  - For sizes or finishes not listed in this catalog, contact Hager Customer Service for availability





**PULLS**



**932P | 932B**  
**S-Shaped Pull**

Projection: 3" (76 mm)  
 Clearance: 2" (51 mm)  
 Pull Diameter: 1" (25 mm)  
 Fasteners: Two (2) 3/8-16 FPHMS w/ finish washers  
 CTC Length: 30" (762 mm)  
 Materials: Aluminum, brass, bronze, stainless steel  
 Finishes: US3, US4, US10B, US15A, US26, US26D, US28, US32D  
 Fasteners: Two (2) 3/8-16 FPHMS with finish washers  
 Notes:
 

- 932B is pair of 932P with fasteners for back to back mounting
- Specify handing when ordering
- For sizes or finishes not listed in this catalog, contact Hager Customer Service for availability



**933P | 933B**  
**Colonial Style Pull**

Projection: 2-3/16" (56 mm)  
 Clearance: 1-3/16" (30 mm)  
 Pull Diameter: 1" (25 mm)  
 Base Diameter: 15/16" (24 mm)  
 CTC Length: 6" (152 mm)  
 Materials: Brass and bronze  
 Finishes: US3, US4, US10B, US26  
 Fasteners: Two (2) 3/8-16 FPHMS with finish washers  
 Notes: 933B is pair of 933P with fasteners for back to back mounting



**934P | 934B**  
**Offset Pull**

Projection: 3-1/8" (80 mm)  
 Clearance: 1-7/8" (48 mm)  
 Pull Diameter: 1-1/4" (32 mm)  
 Base Diameter: 1" (25 mm)  
 CTC Lengths: 12" (305 mm), 16" (406 mm), 18" (457 mm)  
 Materials: Aluminum, brass, bronze, stainless steel  
 Finishes: US3, US4, US10B, US15A, US26, US26D, US28, US32D  
 Fasteners: Two (2) 3/8-16 FPHMS with finish washers  
 Notes: 934B is pair of 934P with fasteners for back to back mounting



**960P | 960B**  
**Square Tip Pull**

O/A Height: 16" (406 mm)  
 Base Diameter: 1-1/4" (32 mm)  
 Pull Diameter: 1" (25 mm)  
 Clearance: 1-3/4" (45 mm)  
 Projection: 3-1/4" (83 mm)  
 CTC Length: 12" (305 mm)  
 Materials: Brass, bronze  
 Finishes: US3, US4, US10B, US15A, US26, US26D  
 Fasteners: Two (2) 3/8-16 FPHMS w/ finish washers  
 Notes:
 

- 960B is pair of 960P with fasteners for back to back mounting
- For sizes or finishes not listed in this catalog, contact Hager Customer Service for availability





## PULLS



### 962P

#### Acorn Tip Pull

O/A Height: 16-5/16" (414 mm)

Base Diameter: Pull 2" (51 mm)

Diameter: 1" (25 mm)

Projection: 3" (76 mm)

Clearance: 1-7/8" (48 mm)

CTC Length: 12" (305 mm)

Materials: Brass, bronze

Finishes: US3, US4, US10B, US15A, US26, US26D

Fasteners: Two (2) 3/8-16 FPHMS with finish washers

Notes: For sizes or finishes not listed in this catalog, contact Hager Customer Service for availability



### 963P

#### Acorn Pull - Offset

O/A Height: 16-5/16" (414 mm)

Pull Diameter: 1" (25 mm)

Projection: 2-3/4" (70 mm)

CTC Lengths: 12" (304 mm), 16" (406 mm), 18" (457 mm), 24" (610 mm), 30" (762 mm)

Materials: Cast brass, bronze

Finishes: US3, US4, US10B, US15A, US26, US26D

Fasteners: Two (2) 3/8-16 FPHMS with finish washers

Notes: For sizes or finishes not listed in this catalog, contact Hager Customer Service for availability



### 967P

#### Curved Pull

O/A Height: 20-1/2" (520 mm)

Projection: 5-9/16" (141 mm)

Clearance: 3-9/16" (90 mm)

CTC Length: 16" (406 mm)

Materials: Brass, bronze

Finishes: US3, US4, US10B, US15A, US26, US26D

Fasteners: Two (2) 3/8-16 FPHMS with finish washers

Notes: For sizes or finishes not listed in this catalog, contact Hager Customer Service for availability



**PULLS**



**970P**

**Custom Push/Pull Set**

Base Diameter: 1" (25 mm)  
 Pull Projection: 3" (76 mm)  
 Pull Clearance: 2" (51 mm)  
 CTC Length: 13-1/4" (337 mm)  
 Push Projection: 2-3/4" (70 mm)  
 Push Clearance: 1-3/4" (45 mm)  
 CTC Length: 34" (864 mm) or to suit door dimension  
 Materials: Brass, bronze, stainless steel  
 Finishes: US3, US4, US10, US10B, US15A, US26, US26D, US32D  
 Fasteners: 3/8 x 16 Type 3 mounting, concealed cone with 3/8 x 16 Type 2 thru bolts and finish washer; Type 1, thru-bolt, finish washer mount for free ends

Notes:

- Pull or push bar can be ordered separately by quotation only
- Push bar radius can be custom made so the radius points in the downward direction
- For sizes or finishes not listed in this catalog, contact Hager Customer Service for availability



**974P | 974B**

**Door Pull**

Projection: 2-1/2" (64 mm)  
 CTC Length: 12" (304 mm), 18" (457 mm), 24" (610 mm), 30" (762 mm), 36" (914 mm), 48" (1219 mm)

Materials: Brass, bronze, stainless steel  
 Finishes: US3, US4, US10B, US26, US26D, US32D  
 Fasteners: Two (2) 3/8-16 FPHMS with finish washers

Notes:

- 974B is pair of 974P with fasteners for back to back mounting
- For sizes or finishes not listed in this catalog, contact Hager Customer Service for availability



**975P | 975B**

**Vertical Pull**

Projection: 2.50" (63.5 mm)  
 O/A Length: 36" (914 mm), 72" (1829 mm)  
 CTC Length: 20" (508 mm), 56" (1422 mm)  
 Pull Diameter: 1" (25 mm)

Materials: Brass, bronze, stainless steel  
 Finishes: US3, US4, US10, US10B, US15A, US26, US26D, US32D  
 Fasteners: Two (2) 3/8-16 FPHMS with finish washers

Notes:

- 975B is pair of 975P with fasteners for back to back mounting
- For sizes or finishes not listed in this catalog, contact Hager Customer Service for availability





## PULLS



### 976P | 976B

#### Door Pull - Offset

O/A Height: 29-1/2" (750 mm)  
 Base Diameter: 1-1/4" (32 mm)  
 Pull Diameter: 1-1/4" (32 mm)  
 Projection: 5-3/8" (137 mm)  
 Clearance: 4-1/8" (105 mm)  
 Offset: 1-3/4" (45 mm)  
 CTC Length: 19-13/16" (503 mm)  
 Materials: Stainless steel  
 Finish: US32D  
 Fasteners: Two (2) 3/8-16 FPHMS with finish washers  
 Notes:

- 976B is pair of 976P with fasteners for back to back mounting
- For sizes or finishes not listed in this catalog, contact Hager Customer Service for availability



### 980P | 980B

#### Segment Shape - Straight

CTC Length: 9" (229 mm), 12" (305 mm), 18" (457 mm), 24" (610 mm)  
 Materials: Brass, bronze, stainless steel  
 Finishes: US3, US4, US10B, US15A, US26, US26D, US32D  
 Fasteners: Two (2) 3/8-16 FPHMS with finish washers  
 Notes:

- 980B is pair of 980P with fasteners for back to back mounting
- For sizes or finishes not listed in this catalog, contact Hager Customer Service for availability



### 981P | 981B

#### Segment Shape - Offset

Projection: 2-3/8" (60 mm)  
 CTC Length: 12" (305 mm), 18" (457 mm), 24" (610 mm)  
 Materials: Brass, bronze, stainless steel  
 Finishes: US3, US4, US10B, US15A, US26, US26D, US32D  
 Fasteners: Two (2) 3/8-16 FPHMS with finish washers  
 Notes:

- 981B is pair of 981P with fasteners for back to back mounting
- For sizes or finishes not listed in this catalog, contact Hager Customer Service for availability



## PULLS



### **983P | 983B**

#### **Curved Pull**

O/A Height: 21-1/4" (540 mm)

Base Diameter: 1-1/4" (32 mm)

Projection: 3-1/8" (79 mm)

Clearance: 1-7/8" (48 mm)

CTC Length: 20" (508 mm)

Materials: Brass, bronze, stainless steel

Finishes: US3, US4, US10B, US15A, US26, US26D, US32D

Fasteners: Two (2) 3/8-16 FPHMS with finish washers

#### Notes:

- 983B is pair of 983P with fasteners for back to back mounting
- Specify handing when ordering
- For sizes or finishes not listed in this catalog, contact Hager Customer Service for availability



### **984P | 984B**

#### **Curved Pull**

Projection: 3" (76 mm)

CTC Lengths: 12" (305 mm), 20" (508 mm)

Materials: Brass, bronze, stainless steel

Finishes: US3, US4, US10B, US15A, US26, US32, US32D

Fasteners: Two (2) 3/8-16 FPHMS with finish washers

#### Notes:

- 984B is pair of 984P with fasteners for back to back mounting
- For sizes or finishes not listed in this catalog, contact Hager Customer Service for availability





## PULLS

This page deliberately left blank.

## FLUSH CUP PULLS



### 15C

#### Heavy Duty Flush Cup Pull

Certification: Meets ANSI A156.6 for J403 Pulls  
 Description: Cup welded to face plate  
 Face: 3-1/2" x 5" (89 mm x 127 mm)  
 Projection: 1/8" (3.2 mm)  
 Opening: 1-3/4" x 3-1/16" (44 mm x 78 mm)  
 Cup Clearance: 3/4" (19 mm)  
 Materials: Stainless steel  
 Finishes: US32D  
 Fasteners: Four (4) #6 x 5/8" OPHWS



### 15N

#### Flush Cup Pull

Certification: Meets ANSI A156.6 for J403 Pulls  
 Description: Cup welded to face plate  
 Face: 3-1/2" x 5" (89 mm x 127 mm)  
 Projection: 1/8" (3.2 mm)  
 Opening: 1-3/4" x 3-1/16" (44 mm x 78 mm)  
 Cup Clearance: 3/4" (19 mm)  
 Materials: Aluminum, brass, bronze, stainless steel  
 Finishes: US3, US4, US10, DBZ, US19, US26, US26D, US28, US32D  
 Fasteners: Four (4) #6 x 5/8" OPHWS



### 15P

#### Heavy Duty Security Flush Cup Pull

Certification: Meets ANSI A156.6 for J403 Pulls  
 Description: Cup welded to face plate and welded studs for security torx thru-bolt mounting  
 Face: 3-1/2" x 5" (89 mm x 127 mm)  
 Projection: 1/8" (3.2 mm)  
 Opening: 1-3/4" x 3-1/16" (44 mm x 78 mm)  
 Cup Clearance: 3/4" (19 mm)  
 Materials: Stainless steel  
 Finishes: US32D  
 Fasteners: Two (2) 6-32 x 1-1/2" FPHMS (Security Torx)  
 Notes: For use on 1-3/4" (44 mm) doors



### 15S

#### Light Duty Flush Cup Pull

Certification: Meets ANSI A156.6 for J403 Pulls  
 Description: Concealed mounting by screws within the recessed cup (similar to 16N or 17N)  
 Face: 3-1/2" x 5" (89 mm x 127 mm)  
 Projection: 1/8" (3.2 mm)  
 Opening: 1-3/4" x 3-1/16" (44 mm x 78 mm)  
 Cup Clearance: 3/4" (19 mm)  
 Materials: Aluminum, brass, bronze, stainless steel  
 Finishes: US3, US4, US10, DBZ, US19, US26, US26D, US28, US32D  
 Fasteners: Two (2) #6 x 5/8" PPHWS  
 Notes: Fasteners concealed in cup





## FLUSH CUP PULLS



### 16N

#### Light Duty Flush Cup Pull

Certification: Meets ANSI A156.6 for J403 Pulls  
 Face: 1-15/16" x 3" (49 mm x 76 mm)  
 Projection: 1/16" (1.5 mm)  
 Opening: 27/32" x 2-3/8" (22 mm x 60 mm)  
 Cup Clearance: 5/8" (16 mm)  
 Materials: Brass  
 Finishes: US3, US4, US10, DBZ, US19, US26, US26D  
 Fasteners: Two (2) #8 x 3/4" OPHWS  
 Notes: Fasteners concealed in cup



### 16R

#### Finger Pull Plate

Certification: Meets ANSI A156.6 for combination J301 Pull Plate and J403 Pulls  
 Face: 4" x 16" (102 mm x 406 mm)  
 Projection: .050" (1.3 mm)  
 Opening: 1-3/4" x 3-1/16" (44 x 78 mm)  
 Cup Clearance: 13/16" (21 mm)  
 Materials: Aluminum, brass, bronze, stainless steel  
 Finishes: US3, US4, US10, US10B, DBZ, US19, US26, US26D, US28, US32, US32D  
 Fasteners: Ten (10) #6 x 5/8" OPHWS



### 17N

#### Light Duty Flush Cup Pull

Certification: Meets ANSI A156.6 for J403 Pulls  
 Face: 2-1/2" x 3-31/32" (64 mm x 101 mm)  
 Projection: 3/32" (2.4 mm)  
 Opening: 1-11/32" x 3-13/32" (34 mm x 87 mm)  
 Cup Clearance: 5/8" (16 mm)  
 Materials: Brass  
 Finishes: US3, US4, US10, DBZ, US19, US26, US26D  
 Fasteners: Two (2) #8 x 13/16" OPHWS  
 Notes: Fasteners concealed in cup



### 25B

#### Security Flush Pull Set

Certification: Meets ANSI A156.6 for J403 Pulls  
 Face: 3-1/2" x 5" (89 mm x 127 mm)  
 Opening: 1-3/4" x 3-1/16" (45 mm x 78 mm)  
 Projection: 3/16" (5 mm)  
 Cup Clearance: 3/4" (19 mm)  
 Door Thickness: 1-3/4" (45 mm) - Standard  
 Materials: Stainless steel  
 Finishes: US32D  
 Fasteners: Two (2) 6-32 x 1-1/2" FPHMS (Security Torx)  
 Notes: Security pull thru-bolted to a 15P pull



## FLUSH CUP PULLS



### 25C

#### Heavy Duty Flush Pull Set

Certification: Meets ANSI A156.6 for J403 Pulls  
 Face: 3-1/2" x 5" (89 mm x 127 mm)  
 Opening: 1-3/4" x 3-1/16" (45 mm x 78 mm)  
 Projection: 1/8" (3 mm)  
 Cup Clearance: 3/4" (19 mm)  
 Door Thickness: 1-3/4" (45 mm) - Standard  
 Materials: Stainless steel  
 Finishes: US32D  
 Fasteners: Two (2) 6-32 OPHMS sex nuts and bolts  
 Notes: Consists of two (2) 15C pulls mounted back to back



### 25N

#### Flush Pull Set

Certification: Meets ANSI A156.6 for J403 Pulls  
 Face: 3-1/2" x 5" (89 mm x 127 mm)  
 Opening: 1-3/4" x 3-1/16" (45 mm x 78 mm)  
 Projection: 1/8" (3 mm)  
 Cup clearance: 3/4" (19 mm)  
 Door Thickness: 1-3/4" (45 mm) - Standard  
 Materials: Aluminum, brass, bronze, stainless steel  
 Finishes: US3, US4, US10, DBZ, US19, US26, US26D, US28, US32D  
 Fasteners: Two (2) 6-32 OPHMS sex nuts and bolts  
 Notes: Consists of two (2) 15N pulls mounted back to back



### 25P

#### Security Finger Push/Pull Plate Set

Certification: Meets ANSI A156.6 for combination J301 Push Plate and J403 Flush Pull  
 Face: 4" x 16" (102 mm x 406 mm)  
 Projection: 1/8" (3.2 mm)  
 Opening: 1-3/4" x 3-1/16" (44 mm x 78 mm)  
 Cup Clearance: 13/16" (21 mm)  
 Materials: Stainless steel  
 Finishes: US32D  
 Fasteners: Six (6) 8-32 x 3/4" FPHMS (Security Torx) with sex nuts and bolts  
 Notes: Consists of a 15 pull cup welded to a 100T push plate (Mounted in back to back fashion)



### 26N

#### Security Finger Pull

Certification: Meets ANSI A156.6 for J403 Pulls  
 Face: 4" x 5" (102 mm x 127 mm)  
 Projection: 1/8" (3.2 mm)  
 Opening: 1-5/8" x 3" (41 mm x 76 mm)  
 Cup Clearance: 13/16" (21 mm)  
 Materials: Brass, stainless steel  
 Finishes: US4, US26D, US32D  
 Fasteners: Four (4) 1/4-20 x 3/4" Undercut FPHMS (Security Torx)  
 Notes: Cup welded to face





## FLUSH CUP PULLS



### 27N

#### Security Flush Cup Pull

Certification: Meets ANSI A156.6 for J403 Pulls  
Face: 5" x 5" (127 mm x 127 mm)  
Projection: 3/8" (9.5 mm)  
Opening: 3" x 3-1/2" (76 mm x 89 mm)  
Cup Clearance: 7/8" (22 mm)  
Materials: Stainless steel  
Finishes: US32D  
Fasteners: Four (4) 10-24 FPHMS (Security Torx) sex nuts and bolts (compatible with 1-3/4" doors only)  
Notes:

- ADA Compliant
- Not available for back to back mounting



### 27P

#### Security Flush Cup Pull

Certification: Meets ANSI A156.6 for J403 Pulls  
Face: 5" x 5" (127 mm x 127 mm)  
Projection: 3/8" (9.5 mm)  
Opening: 3" x 3-1/2" (76 mm x 89 mm)  
Cup Clearance: 7/8" (22 mm)  
Materials: Stainless steel  
Finishes: US32D  
Fasteners: Four (4) 1/4-20 x 3/4" Undercut FPHMS (Security Torx)  
Notes:

- ADA Compliant
- Not available for back to back mounting

## PULL PLATES



### 30, 40, 50 Series

#### Pull Plate

Gauge: 0.050" (1.3 mm)  
 Certification: Meets ANSI A156.6 for J405 Pull Plate



### 80, 90, 100 Series

#### Pull Plate

Gauge: 0.125" (3.2 mm)  
 Certification: Meets ANSI A156.6 for J407 Pull Plate



### A30, A40, A50 Series

#### Pull Plate

Gauge: 0.062" (1.6 mm)  
 Certification: Meets ANSI A156.6 for J405 Pull Plate

Materials:  
 Standard Sizes:

Aluminum, brass, bronze, stainless steel  
 3" x 12" (76 mm x 305 mm), 3-1/2" x 15" (89 mm x 381 mm), 4" x 16" (102 mm x 406 mm), 6" x 16" (152 mm x 406 mm)\*, 8" x 16" (203 mm x 406 mm)\* - \*(size not available for 50 and A50 Series)

Fasteners:  
 Finishes:

Six (6) #6 x 5/8 OPH tapping screws  
 US3, US4, US10, DBZ, US19, US26, US26D, US28, US32, US32D and diamond tread – available for the A30 in US26 only

Notes:

- For sizes or finishes not listed in this catalog, contact Hager Customer Service for availability
- Plate only - does not include pull

### How To Order:

- 1) Identify plate (ex: 30 Series)
- 2) Add pull (ex.: 3G)
- 3) Add to order (ex: 33G)

**Pull Plate Chart**

Pull	30, 40, 50 Series			A30, A40, A50 Series			80, 90, 100 Series		
	Square Corner	Radius Corner	Rounded Corner	Square Corner	Radius Corner	Rounded Corner	Square Corner	Radius Corner	Rounded Bevel
	Pull Plate Part Number								
1E	31E	41E	51E	A31E	A41E	A51E	81E	91E	101E
1G	31G	41G	51G	A31G	A41G	A51G	81G	91G	101G
1J	31J	41J	51J	A31J	A41J	A51J	81J	91J	101J
1L	31L	41L	51L	A31L	A41L	A51L	81L	91L	101L
2E	32E	42E	52E	A32E	A42E	A52E	82E	92E	102E
2G	32G	42G	52G	A32G	A42G	A52G	82G	92G	102G
2J	32J	42J	52J	A32J	A42J	A52J	82J	92J	102J
2L	32L	42L	52L	A32L	A42L	A52L	82L	92L	102L
3E	33E	43E	53E	A33E	A43E	A53E	83E	93E	103E
3G	33G	43G	53G	A33G	A43G	A53G	83G	93G	103G
3J	33J	43J	53J	A33J	A43J	A53J	83J	93J	103J
3L	33L	43L	53L	A33L	A43L	A53L	83L	93L	103L
4G	34G	44G	54G	A34G	A44G	A54G	84G	94G	104G
4J	34J	44J	54J	A34J	A44J	A54J	84J	94J	104J
4L	34L	44L	54L	A34L	A44L	A54L	84L	94L	104L
5D	35D	45D	55D	A35D	A45D	A55D	85D	95D	105D
5N	35N	45N	55N	A35N	A45N	A55N	85N	95N	105N
6N	36N	46N	56N	A36N	A46N	A56N	86N	96N	106N
9E	39E	49E	59E	A39E	A49E	A59E	89E	99E	109E
9G	39G	49G	59G	A39G	A49G	A59G	89G	99G	109G
9J	39J	49J	59J	A39J	A49J	A59J	89J	99J	109J
9L	39L	49L	59L	A39L	A49L	A59L	89L	99L	109L





## PULL PLATES



### 313L

#### Antivandal Trim with Latchguard

- Certification: Meets ANSI A156.6 for J401 Pull and ANSI A156.6 for J407 Pull Plate  
 Size: 7-13/32" x 11" (188 mm x 280 mm)  
 Height: 11" (280 mm)  
 Projection: 1-7/8" (48 mm)  
 Clearance: 1-5/8" (41 mm)  
 Door Thickness: 1-3/4" – 2" (45 mm - 51 mm)  
 Materials: 11 gauge stainless steel  
 Finishes: US32D  
 Fasteners: 1/4-20 FPHMS with finish washers - Standard  
 Options:

Notes:

- Cylinder cutout available - 1-1/4" (32 mm) diameter standard for exit device use and 1-1/2" (38 mm) diameter standard for mortise lock use
- Plastisol grip available
- For use with most mortise locks on out-swinging doors
- For use with many exit devices (thru bolts directly to device)
- Cylinders must be ordered separately
- When mounting trim to a Hager exit device, cylinder collar (2-649-0137) must be purchased to ensure proper installation (see instructions for more detail)
- When mounting trim to a Hager exit device, a 7/16" (11 mm) tall cylinder collar must be purchased when using a 1-1/4" - 1-3/8" (32 mm - 35 mm) long rim cylinder (see instructions for more detail)



### 313S

#### Antivandal Trim

- Certification: Meets ANSI A156.6 for J401 Pull and ANSI A156.6 for J407 Pull Plate  
 Size: 6-11/32" x 11" (161 mm x 280 mm)  
 Height: 11" (280 mm)  
 Projection: 1-7/8" (48 mm)  
 Clearance: 1-5/8" (41 mm)  
 Door Thickness: 1-3/4" – 2" (45 mm - 51 mm)  
 Materials: 11 gauge stainless steel  
 Finishes: US32D  
 Fasteners: 1/4-20 FPHMS with finish washers - Standard  
 Options:

Notes:

- Cylinder cutout available - 1-1/4" (32 mm) diameter standard for exit device use and 1-1/2" (38 mm) diameter standard for mortise lock use
- Plastisol grip available
- For use with most mortise locks on in-swinging and out-swinging doors
- For use with many exit devices (thru bolts directly to device)
- Cylinders must be ordered separately
- When mounting trim to a Hager exit device, cylinder collar (2-649-0137) must be purchased to ensure proper installation (see instructions for more detail)
- When mounting trim to a Hager exit device, a 7/16" (11 mm) tall cylinder collar must be purchased when using a 1-1/4" - 1-3/8" (32 mm - 35 mm) long rim cylinder (see instructions for more detail)

## PUSH PLATES



### 30S | A30S

#### Square Corner - Beveled Push Plate

Certification: Meets ANSI A156.6 for J301 Push Plate  
 Gauge: • 30S - 0.050" (1.3 mm)  
 • A30S - 0.062" (1.6 mm)  
 Materials: Aluminum, brass, bronze, stainless steel  
 Finishes: US3, US4, US10, DBZ, US19, US26, US26D, US28, US32, US32D  
 Fasteners: Six (6) #6 x 5/8" OPH tapping screws  
 Options: May be ordered cut for cylinder (CFC) or engraved "PUSH"  
 Notes: For sizes or finishes not listed in this catalog, contact Hager Customer Service for availability

Available in Sizes					
Inches	3 x 12	3-1/2 x 15	4 x 16	6 x 16	8 x 16
Millimeters	76 x 305	89 x 38	102 x 406	152 x 406	203 x 406



### 40R | A40R

#### Radius Corner - Beveled Push Plate

Certification: Meets ANSI A156.6 for J301 Push Plate  
 Gauge: • 40R - 0.050" (1.3 mm)  
 • A40R - 0.062" (1.6 mm)  
 Materials: Aluminum, brass, bronze, stainless steel  
 Finishes: US3, US4, DBZ, US19, US26, US26D, US28, US32, US32D  
 Fasteners: Six (6) #6 x 5/8" OPH tapping screws  
 Options: May be ordered cut for cylinder (CFC) or engraved "PUSH"  
 Notes: For sizes or finishes not listed in this catalog, contact Hager Customer Service for availability

Available in Sizes					
Inches	3 x 12	3-1/2 x 15	4 x 16	6 x 16	8 x 16
Millimeters	76 x 305	89 x 38	102 x 406	152 x 406	203 x 406



### 50T | A50T

#### Round Corner - Beveled Push Plate

Certification: Meets ANSI A156.6 for J301 Push Plate  
 Gauge: • 50T - 0.050" (1.3 mm)  
 • A50T - 0.062" (1.6 mm)  
 Materials: Aluminum, brass, bronze, stainless steel  
 Finishes: US3, US4, US10, DBZ, US19, US26, US26D, US28, US32, US32D  
 Fasteners: Six (6) #6 x 5/8" OPH tapping screws  
 Options: May be ordered cut for cylinder (CFC) or engraved "PUSH"  
 Notes: For sizes or finishes not listed in this catalog, contact Hager Customer Service for availability

Available in Sizes			
Inches	3 x 12	3-1/2 x 15	4 x 16
Millimeters	76 x 305	89 x 38	102 x 406



## PUSH PLATES



### 60S

#### Square Corner - Beveled Push Plate

**Certification:** Meets ANSI A156.6 for J304 Push Plate  
**Gauge:** 0.125" (3.2 mm)  
**Materials:** Plastic laminate  
**Finishes:** PG - Grey, PK - Black, CO - Brown  
**Fasteners:** Six (6) #6 x 5/8" OPH tapping screws  
**Options:** May be ordered cut for cylinder (CFC) or engraved "PUSH"  
**Notes:** For sizes or finishes not listed in this catalog, contact Hager Customer Service for availability

Available in Sizes					
Inches	3 x 12	3-1/2 x 15	4 x 16	6 x 16	8 x 16
Millimeters	76 x 305	89 x 38	102 x 406	152 x 406	203 x 406



### 70S

#### Square Corner - Beveled Push Plate

**Certification:** Meets ANSI A156.6 for J304 Push Plate  
**Gauge:** 0.125" (3.2 mm)  
**Materials:** Clear plastic laminate  
**Finishes:** PC - Clear  
**Fasteners:** Six (6) #6 x 5/8" OPH tapping screws  
**Options:** May be ordered cut for cylinder (CFC) or engraved "PUSH"  
**Notes:** For sizes or finishes not listed in this catalog, contact Hager Customer Service for availability

Available in Sizes					
Inches	3 x 12	3-1/2 x 15	4 x 16	6 x 16	8 x 16
Millimeters	76 x 305	89 x 38	102 x 406	152 x 406	203 x 406



### 80S

#### Square Corner - Beveled Push Plate

**Certification:** Meets ANSI A156.6 for J304 Push Plate  
**Gauge:** 0.125" (3.2 mm)  
**Materials:** Aluminum, brass, bronze, stainless steel  
**Finishes:** US3, US4, US10, DBZ, US19, US26, US26D, US28, US32, US32D  
**Fasteners:** Six (6) #6 x 5/8" OPH tapping screws  
**Options:** May be ordered cut for cylinder (CFC) or engraved "PUSH"  
**Notes:** For sizes or finishes not listed in this catalog, contact Hager Customer Service for availability

Available in Sizes					
Inches	3 x 12	3-1/2 x 15	4 x 16	6 x 16	8 x 16
Millimeters	76 x 305	89 x 38	102 x 406	152 x 406	203 x 406

## PUSH PLATES



### 90R

#### Radius Corner - Non-Beveled Push Plate

**Certification:** Meets ANSI A156.6 for J304 Push Plate  
**Gauge:** 0.125" (3.2 mm)  
**Materials:** Aluminum, brass, bronze, stainless steel  
**Finishes:** US3, US4, US10, DBZ, US19, US26, US26D, US28, US32, US32D  
**Fasteners:** Six (6) #6 x 5/8" OPH tapping screws  
**Options:** May be ordered cut for cylinder (CFC) or engraved "PUSH"  
**Notes:** For sizes or finishes not listed in this catalog, contact Hager Customer Service for availability

Available in Sizes					
Inches	3 x 12	3-1/2 x 15	4 x 16	6 x 16	8 x 16
Millimeters	76 x 305	89 x 38	102 x 406	152 x 406	203 x 406



### 100T

#### Square Corner - Rounded Bevel Top and Bottom Push Plate

**Certification:** Meets ANSI A156.6 for J304 Push Plate  
**Gauge:** 0.125" (3.2 mm)  
**Materials:** Aluminum, brass, bronze, stainless steel  
**Finishes:** US3, US4, US10, DBZ, US19, US26, US26D, US28, US32, US32D  
**Fasteners:** Six (6) #6 x 5/8" OPH tapping screws  
**Options:** May be ordered cut for cylinder (CFC) or engraved "PUSH"  
**Notes:** For sizes or finishes not listed in this catalog, contact Hager Customer Service for availability

Available in Sizes					
Inches	3 x 12	3-1/2 x 15	4 x 16	6 x 16	8 x 16
Millimeters	76 x 305	89 x 38	102 x 406	152 x 406	203 x 406



### 110S

#### Half Circle Push Plate

**Certification:** Meets ANSI A156.6 for J301 Push Plate  
**Plate:** 8" x 16" (203 mm x 406 mm)  
**Gauge:** 0.050" (1.3 mm)  
**Materials:** Aluminum, brass, bronze, stainless steel  
**Finishes:** US3, US4, DBZ, US19, US26, US26D, US28, US32, US32D  
**Fasteners:** Six (6) #6 x 5/8" OPH tapping screws  
**Options:** May be ordered cut for cylinder (CFC) or engraved "PUSH"  
**Notes:** For sizes or finishes not listed in this catalog, contact Hager Customer Service for availability



## PUSH PLATES



### 120L

#### Pull Plate with Lip - Non-Beveled

**Certification:** Meets ANSI A156.6 for J303 Plate  
**Plate:** 3-1/2" x 16" (89 mm x 406 mm)  
**Lip Projection:** 1-1/8" (29 mm)  
**Gauge:** 0.125" (3.2 mm)  
**Materials:** Aluminum, brass, bronze, stainless steel  
**Finishes:** US3, US4, US10, DBZ, US19, US26, US26D, US28, US32, US32D  
**Fasteners:** Six (6) #6 x 5/8" OPH tapping screws  
**Options:**

- Other sizes available, please specify
- May be ordered cut for cylinder (CFC) or engraved

**Notes:** For sizes or finishes not listed in this catalog, contact Hager Customer Service for availability



### 121L

#### Cylinder Pull - Beveled

**Plate:** 2" x 3-3/4" (51 mm x 95 mm)  
**Lip Projection:** 1-1/8" (29 mm)  
**Cylinder Cutout:** 1-1/4" (32 mm) diameter  
**Gauge:** 0.125" (3.2 mm)  
**Materials:** Aluminum, brass, bronze, stainless steel  
**Finishes:** US3, US4, US10, DBZ, US19, US26, US26D, US28, US32, US32D  
**Fasteners:** Attached by lock cylinder  
**Notes:**

- 1/4"-20 x 3/8" stud installed on reverse side to eliminate twisting
- For sizes or finishes not listed in this catalog, contact Hager Customer Service for availability



### 122L

#### Security Pull/Push Plate Set - Beveled

**Certification:** Meets ANSI A156.6 for combination J304 Push Plate and J303 Flush Pull  
**Push Plate:** 4" x 16" (102 mm x 406 mm)  
**Pull Plate:** 4" x 9-1/4" (102 mm x 235 mm)  
**Lip Projection:** 2-1/8" (54 mm)  
**Gauge:** 0.125" (3.2 mm)  
**Materials:** Stainless steel  
**Finishes:** US32D  
**Fasteners:** Four (4) 8-32 FPHMS (Security Torx) sex nuts and bolts  
 Two (2) 8-32 x 1/2" FPHMS (Security Torx)  
**Notes:** For sizes or finishes not listed in this catalog, contact Hager Customer Service for availability



## PUSH BARS



### **125S** **Bent Push Bar**

Certification: Meets ANSI A156.6 for J501 Push Bar  
Bar Size: 3/8" x 1-1/4" (10 mm x 32 mm)  
Projection: 2-1/8" (54 mm)  
Base Plate: 1" x 3" (25 mm x 76 mm)  
Materials: Aluminum, brass, bronze, stainless steel  
Finishes: US3, US4, US10, DBZ, US19, US28, US32, US32D  
Fasteners: Two (2) #8 x 3/4" FPH tapping screws and one (1) 1/4 - 20 OPHMS  
Options: May be ordered with thru bolts in place of surface screws



### **126S** **Push Bar**

Certification: Meets ANSI A156.6 for J501 Push Bar  
Bar Size: 3/8" x 1-1/4" (10 mm x 32 mm)  
Projection: 2-1/8" (54 mm)  
Base Plate: 1" x 3" (25 mm x 76 mm)  
Materials: Aluminum, brass, bronze, stainless steel  
Finishes: US3, US4, US10, DBZ, US19, US28, US32, US32D  
Fasteners: Four (4) #8 x 3/4" FPH tapping screws  
Options: May be ordered with thru bolts in place of surface screws



### **127S** **Push Bar**

Certification: Meets ANSI A156.6 for J501 Push Bar  
Bar Size: 3/8" x 1-1/4" (10 mm x 32 mm)  
Projection: 3/4" (19 mm)  
Base Plate: 1-1/4" x 1-1/4" (32 mm x 32 mm)  
Materials: Aluminum, brass, bronze, stainless steel  
Finishes: US3, US4, US10, DBZ, US19, US28, US32, US32D  
Fasteners: Two (2) 1/4-20 FPHMS  
Options: May be ordered with thru bolts in place of surface screws



### **128P** **Wide Push Bar**

Certification: Meets ANSI A156.6 for J501 Push Bar  
Bar Size: 3/8" x 3" (10 mm x 76 mm)  
Projection: 2-1/8" (54 mm)  
Base Plate: 1-1/2" x 4-1/2" (38 mm x 114 mm)  
Materials: Aluminum, brass, bronze, stainless steel  
Finishes: US3, US4, US10, DBZ, US19, US26, US26D, US28, US32, US32D  
Fasteners: Eight (8) #8 x 3/4" FPH tapping screws





## PUSH BARS



### **128S** **Wide Push Bar**

Certification: Meets ANSI A156.6 for J501 Push Bar  
 Bar Size: 3/8" x 3" (10 mm x 76 mm)  
 Projection: 2" (51 mm)  
 Base Plate: 1-1/2" x 4-1/2" (38 mm x 114 mm)  
 Door Thickness: 1-3/4" (45 mm) - Standard  
 Materials: Aluminum, brass, bronze, stainless steel  
 Finishes: US3, US4, US10, DBZ, US19, US26, US26D, US28, US32, US32D  
 Fasteners: Two (2) 1/4 - 20 x 2-1/4" FPHMS with finish washers 128S is same as 128P, but without base plates  
 Notes:



### **129P** **Wide Push Bar**

Certification: Meets ANSI A156.6 for J501 Push Bar  
 Bar Size: 3/8" x 3" (10 mm x 76 mm)  
 Projection: 3/4" (19 mm)  
 Base Plate: 1" x 3" (25 mm x 76 mm)  
 Materials: Aluminum, brass, bronze, stainless steel  
 Finishes: US3, US4, US10, DBZ, US19, US28, US32, US32D  
 Fasteners: Two (2) 1/4-20 x 1-1/4" FPHMS  
 Options:
 

- May be ordered with thru bolts in place of surface screws
- #14 Flat head wood screws available on special order



### **130S** **Round Push Bar**

Certification: Meets ANSI A156.6 for J501 Push Bar  
 Bar Stock: 1" (25 mm)  
 Projection: 2-1/2" (64 mm)  
 Door Thickness: 1-3/4" (45 mm) - Standard  
 Materials: Aluminum, brass, bronze, stainless steel  
 Finishes: US3, US4, US10, DBZ, US19, US28, US32, US32D  
 Fasteners: Two (2) 1/4-20 x 20 x 2-1/4" FPHMS with finish washers  
 Options: May be ordered with Type 5 concealed mountings at extra charge



### **131S** **Round Push Bar**

Certification: Meets ANSI A156.6 for J501 Push Bar  
 Bar Stock: 1" (25 mm)  
 Projection: 2-5/8" (67 mm)  
 Base Diameter: 2" (51 mm)  
 Door Thickness: 1-3/4" (45 mm) - Standard  
 Materials: Aluminum, brass, bronze, stainless steel  
 Finishes: US3, US4, US10, DBZ, US19, US28, US32, US32D  
 Fasteners: Two (2) 1/4-20 x 2-1/4" FPHMS with finish washers  
 Options: May be ordered with Type 5 concealed mountings at extra charge

## PUSH BARS



### 133S

#### Round Push Bar

Certification: Meets ANSI A156.6 for J501 Push Bar  
Bar Stock: 3/4" (19 mm)  
Projection: 2-1/4" (57 mm)  
Door Thickness: 1-3/4" (45 mm) - Standard  
Materials: Aluminum, brass, bronze, stainless steel  
Finishes: US3, US4, US10, DBZ, US19, US28, US32, US32D  
Fasteners: Two (2) 1/4 - 20 x 2-1/4" FPHMS with finish washers



### 134S

#### Round Push Bar

Certification: Meets ANSI A156.6 for J501 Push Bar  
Bar Stock: 3/4" (19 mm)  
Projection: 2-3/8" (60 mm)  
Base Diameter: 1-1/4" (32 mm)  
Door Thickness: 1-3/4" (45 mm) - Standard  
Materials: Aluminum, brass, bronze, stainless steel  
Finishes: US3, US4, US10, DBZ, US19, US28, US32, US32D  
Fasteners: Two (2) 1/4 - 20 x 2-1/4" FPHMS with finish washers  
Options: May be ordered with Type 5 concealed mountings at extra charge



### 136S

#### Round Push Bar

Certification: Meets ANSI A156.6 for J501 Push Bar  
Bar Stock: 1-1/4" (32 mm)  
Projection: 3" (76 mm)  
Door Thickness: 1-3/4" (45 mm) - Standard  
Materials: Aluminum, brass, bronze, stainless steel  
Finishes: US3, US4, US10, DBZ, US19, US28, US32, US32D  
Fasteners: Two (2) 5/16 - 18 x 2-1/4" FPHMS with finish washers  
Options: May be ordered with Type 5 concealed mountings at extra charge



### 137S

#### Round Push Bar

Certification: Meets ANSI A156.6 for J501 Push Bar  
Bar Stock: 1-1/4" (32 mm)  
Projection: 3-1/8" (79 mm)  
Base Diameter: 2" (51 mm)  
Door Thickness: 1-3/4" (45 mm) - Standard  
Materials: Aluminum, brass, bronze, stainless steel  
Finishes: US3, US4, US10, DBZ, US19, US28, US32, US32D  
Fasteners: Two (2) 5/16 - 18 x 2-1/4" FPHMS with finish washers  
Options: May be ordered with Type 5 concealed mountings at extra charge





## PUSH & PULL BAR SETS



### 138P Round Push/Pull Set

Certification: Meets ANSI A156.6 for J504 Bar Sets  
 Bar Stock: 1" (25 mm)  
 Projection: 2-1/2" (64 mm)  
 Materials: Aluminum, brass, bronze, stainless steel  
 Finishes: US3, US4, US10, DBZ, US19, US28, US32, US32D  
 Fasteners: Two (2) 1/4-20 Type 3 concealed cone



### 139P Round Push/Pull Set

Certification: Meets ANSI A156.6 for J504 Bar Sets  
 Bar Stock: 3/4" (19 mm)  
 Projection: 2-1/4" (60 mm)  
 Materials: Aluminum, brass, bronze, stainless steel  
 Finishes: US3, US4, US10, DBZ, US19, US28, US32, US32D  
 Fasteners: Two (2) 1/4-20 Type 3 concealed cone



### 140P Round Push/Pull Set

Certification: Meets ANSI A156.6 for J504 Bar Sets  
 Bar Stock: 1-1/4" (32 mm)  
 Projection: 3" (76 mm)  
 Materials: Aluminum, brass, bronze, stainless steel  
 Finishes: US3, US4, US10, DBZ, US19, US28, US32, US32D  
 Fasteners: Two (2) 5/16-18 Type 3 concealed cone



### 150D | 150V | 150B Round Push/Pull Set\*

Certification: Meets ANSI A156.6 for J504 Bar Sets  
 Bar Stock: 3/4" (19 mm)  
 Projection: 2-1/4" (57 mm)  
 Pull CTC: 8" (203 mm)  
 Materials: Aluminum, brass, bronze, stainless steel US3,  
 Finishes: US4, US10, DBZ, US19, US28, US32, US32D

\*  
**D = Standard Fastening** - One (1) 3/8-16 Type 7 spanner collar connection between push bar and pull plus two (2) 1/4-20 Type 1 connections for other ends of push bar and pull.  
**V = Fully Concealed Fastening** - One (1) 3/8-16 Type 7 spanner collar connection between push bar and pull plus two (2) 1/4-20 Type 5 connections for ends of push bar and pull.  
**B = Tempered Glass Fastening** - One (1) 3/8-16 Type 7 spanner collar connection between push bar and pull plus two (2) 1/4-20 Type 8 connections for ends of push bar and pull plus gaskets that separate metal parts from glass.

## PUSH & PULL BAR SETS



### 151D | 151V | 151B

#### Round Push/Pull Set\*

Certification: Meets ANSI A156.6 for J504 Bar Sets  
 Bar Stock: 3/4" (19 mm)  
 Projection: 2-1/4" (57 mm)  
 Pull CTC: 10" (254 mm)  
 Materials: Aluminum, brass, bronze, stainless steel US3,  
 Finishes: US4, US10, DBZ, US19, US28, US32, US32D



### 152D | 152V | 152B

#### Round Push/Pull Set\*

Certification: Meets ANSI A156.6 for J504 Bar Sets  
 Bar Stock: 3/4" (19 mm)  
 Projection: 2-1/4" (57 mm)  
 Pull CTC: 12" (305 mm)  
 Materials: Aluminum, brass, bronze, stainless steel  
 Finishes: US3, US4, US10, DBZ, US19, US28, US32, US32D



### 153D | 153V | 153B

#### Round Push/Pull Set\*

Certification: Meets ANSI A156.6 for J504 Bar Sets  
 Bar Stock: 1" (25 mm)  
 Projection: 2-1/2" (64 mm)  
 Pull CTC: 10" (254 mm)  
 Materials: Aluminum, brass, bronze, stainless steel  
 Finishes: US3, US4, US10, DBZ, US19, US28, US32, US32D



### 154D | 154V | 154B

#### Round Push/Pull Set\*

Certification: Meets ANSI A156.6 for J504 Bar Sets  
 Bar Stock: 1" (25 mm)  
 Projection: 2-1/2" (64 mm)  
 Pull CTC: 12" (305 mm)  
 Materials: Aluminum, brass, bronze, stainless steel  
 Finishes: US3, US4, US10, DBZ, US19, US28, US32, US32D

\*

**D = Standard Fastening** - One (1) 3/8-16 Type 7 spanner collar connection between push bar and pull plus two (2) 1/4-20 Type 1 connections for other ends of push bar and pull.

**V = Fully Concealed Fastening** - One (1) 3/8-16 Type 7 spanner collar connection between push bar and pull plus two (2) 1/4-20 Type 5 connections for ends of push bar and pull.

**B = Tempered Glass Fastening** - One (1) 3/8-16 Type 7 spanner collar connection between push bar and pull plus two (2) 1/4-20 Type 8 connections for ends of push bar and pull plus gaskets that separate metal parts from glass.





## PUSH & PULL BAR SETS



### 155D | 155V | 155B

#### Round Push/Pull Set\*

Certification: Meets ANSI A156.6 for J504 Bar Sets  
 Bar Stock: 1" (25 mm)  
 Projection: 2-1/2" (64 mm)  
 Pull CTC: 18" (457 mm)  
 Materials: Aluminum, brass, bronze, stainless steel  
 Finishes: US3, US4, US10, DBZ, US19, US28, US32, US32D



### 156D | 156V | 156B

#### Round Push/Pull Set\*

Certification: Meets ANSI A156.6 for J505 Bar Sets  
 Bar Stock: 3/4" (19 mm) diameter  
 Pull Bar Projection: 2-1/2" (64 mm)  
 Push Bar Projection: 2-1/4" (57 mm)  
 Pull CTC: 8" (203 mm)  
 Offset: 2-1/2" (64 mm), 90° Standard  
 Materials: Aluminum, brass, bronze, stainless steel  
 Finishes: US3, US4, US10, DBZ, US19, US28, US32, US32D  
 Options: For 45° offset pull, add prefix "X" (i.e., X156D) to number  
 Notes: Non-reversible; specify handing



### 157D | 157V | 157B

#### Round Push/Pull Set\*

Certification: Meets ANSI A156.6 for J505 Bar Sets  
 Bar Stock: 3/4" (19 mm) diameter  
 Pull Bar Projection: 2-1/2" (64 mm)  
 Push Bar Projection: 2-1/4" (57 mm)  
 Pull CTC: 10" (254 mm)  
 Offset: 2-1/2" (64 mm), 90° Standard  
 Materials: Aluminum, brass, bronze, stainless steel  
 Finishes: US3, US4, US10, DBZ, US19, US28, US32, US32D  
 Options: For 45° offset pull, add prefix "X" (i.e., X157D) to number  
 Notes: Non-reversible; specify handing



### 158D | 158V | 158B

#### Round Push/Pull Set\*

Certification: Meets ANSI A156.6 for J505 Bar Sets  
 Bar Stock: 3/4" (19 mm) diameter  
 Pull Bar Projection: 2-1/2" (64 mm)  
 Push Bar Projection: 2-1/4" (57 mm)  
 Pull CTC: 12" (305 mm)  
 Offset: 2-1/2" (64 mm), 90° Standard  
 Materials: Aluminum, brass, bronze, stainless steel  
 Finishes: US3, US4, US10, DBZ, US19, US28, US32, US32D  
 Options: For 45° offset pull, add prefix "X" (i.e., X158D) to number  
 Notes: Non-reversible; specify handing

\*

**D = Standard Fastening** - One (1) 3/8-16 Type 7 spanner collar connection between push bar and pull plus two (2) 5/16-18 Type 1 connections for other ends of push bar and pull.

**V = Fully Concealed Fastening** - One (1) 3/8-16 Type 7 spanner collar connection between push bar and pull plus two (2) 5/16-18 Type 5 connections for ends of push bar and pull.

**B = Tempered Glass Fastening** - One (1) 3/8-16 Type 7 spanner collar connection between push bar and pull plus two (2) 5/16-18 Type 8 connections for ends of push bar and pull plus gaskets that separate metal parts from glass.



## PUSH & PULL BAR SETS



### 159D | 159V | 159B

#### Round Push/Pull Set\*

Certification:	Meets ANSI A156.6 for J505 Bar Sets
Bar Stock:	1" (25 mm)
Projection:	2-1/2" (64 mm)
Pull CTC:	10" (254 mm)
Offset:	3" (76 mm), 90° Standard
Materials:	Aluminum, brass, bronze, stainless steel
Finishes:	US3, US4, US10, DBZ, US19, US28, US32, US32D
Options:	For 45° offset pull, add prefix "X" to number (i.e., X159D)
Notes:	Non-reversible; specify handing



### 160D | 160V | 160B

#### Round Push/Pull Set\*

Certification:	Meets ANSI A156.6 for J505 Bar Sets
Bar Stock:	1" (25 mm)
Projection:	2-1/2" (64 mm)
Pull CTC:	12" (305 mm)
Offset:	3" (76 mm), 90° Standard
Materials:	Aluminum, brass, bronze, stainless steel
Finishes:	US3, US4, US10, DBZ, US19, US28, US32, US32D
Options:	For 45° offset pull, add prefix "X" to number (i.e., X160D)
Notes:	Non-reversible; specify handing



### 161D | 161V | 161B

#### Round Push/Pull Set\*

Certification:	Meets ANSI A156.6 for J505 Bar Sets
Bar Stock:	1" (25 mm)
Projection:	2-1/2" (64 mm)
Pull CTC:	18" (457 mm)
Offset:	3" (76 mm), 90° Standard
Materials:	Aluminum, brass, bronze, stainless steel
Finishes:	US3, US4, US10, DBZ, US19, US28, US32, US32D
Options:	For 45° offset pull, add prefix "X" to number (i.e., X161D)
Notes:	Non-reversible; specify handing



### 164D | 164V | 164B

#### Round Push/Pull Set\*

Certification:	Meets ANSI A156.6 for J504 Bar Sets
Bar Stock:	1-1/4" (32 mm)
Projection:	3" (76 mm)
Pull CTC:	12" (305 mm)
Materials:	Aluminum, brass, bronze, stainless steel
Finishes:	US3, US4, US10, DBZ, US19, US28, US32, US32D

\*

**D = Standard Fastening** - One (1) 3/8-16 Type 7 spanner collar connection between push bar and pull plus two (2) 5/16-18 Type 1 connections for other ends of push bar and pull.

**V = Fully Concealed Fastening** - One (1) 3/8-16 Type 7 spanner collar connection between push bar and pull plus two (2) 5/16-18 Type 5 connections for ends of push bar and pull.

**B = Tempered Glass Fastening** - One (1) 3/8-16 Type 7 spanner collar connection between push bar and pull plus two (2) 5/16-18 Type 8 connections for ends of push bar and pull plus gaskets that separate metal parts from glass.





## PUSH & PULL BAR SETS



### 165D | 165V | 165B

#### Round Push/Pull Set\*

Certification:	Meets ANSI A156.6 for J504 Bar Sets
Bar Stock:	1-1/4" (32 mm)
Projection:	3" (76 mm)
Pull CTC:	18" (457 mm)
Materials:	Aluminum, brass, bronze, stainless steel
Finishes:	US3, US4, US10, DBZ, US19, US28, US32, US32D



### 167D | 167V | 167B

#### Round Push/Pull Set\*

Certification:	Meets ANSI A156.6 for J505 Bar Sets
Bar Stock:	1-1/4" (32 mm)
Projection:	3" (76 mm)
Pull CTC:	18" (457 mm)
Offset:	3-3/4" (96 mm), 90° Standard
Materials:	Aluminum, brass, bronze, stainless steel
Finishes:	US3, US4, US10, DBZ, US19, US28, US32, US32D
Notes:	Non-reversible; specify handing.

\*

**D = Standard Fastening** - One (1) 3/8-16 Type 7 spanner collar connection between push bar and pull plus two (2) 5/16-18 Type 1 connections for other ends of push bar and pull.

**V = Fully Concealed Fastening** - One (1) 3/8-16 Type 7 spanner collar connection between push bar and pull plus two (2) 5/16-18 Type 5 connections for ends of push bar and pull.

**B = Tempered Glass Fastening** - One (1) 3/8-16 Type 7 spanner collar connection between push bar and pull plus two (2) 5/16-18 Type 8 connections for ends of push bar and pull plus gaskets that separate metal parts from glass.

All push bar units are made to order. Specify CTC lengths, fastening method unless standard, and type of door (WO, HM, AL, etc.).





## DOOR EDGINGS & CORNER GUARDS

### 180H | 180K | 180M | 180P | 180Q

#### Mortise Door Edging

Certification: Meets ANSI A156.6 Door Edging Type J201 through J212

Standard Length: 36" – 42" (914 mm – 1067 mm)

Materials: Aluminum, stainless steel

Gauge: 0.045" - 0.050" (1.1 mm - 1.3 mm)

Finishes: US28, US32D

Fasteners: #6 x 3/4" FPH tapping screws

Options:

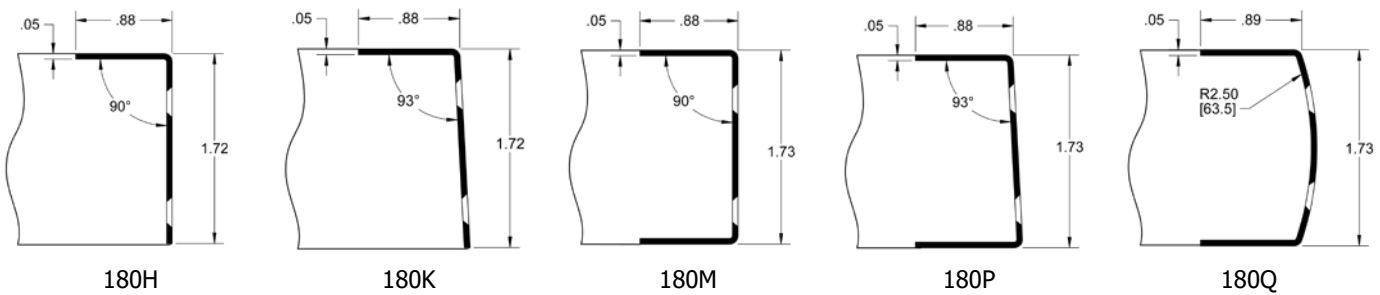
- Other lengths by quotation
- Hinge cutout available
- Latch cutout available
- UL rated edging available

Order:

- Provide actual rather than typical door thickness
- Provide item #, size and finish (i.e., 180H - 40"-32D)

Notes:

- Cutout will hand edging; specify handing information
- Standard edge guards are made for 1-3/4" +0, -1/32" thick doors



### 181H | 181K | 181M | 181P | 181Q

#### Overlap Door Edging

Certification: Meets ANSI A156.6 Door Edging Type J201 through J212

Standard Length: 36" – 42" (914 mm – 1067 mm)

Materials: Aluminum, stainless steel

Gauge: 0.045" - 0.050" (1.1 mm - 1.3 mm)

Finishes: US28, US32D

Fasteners: #6 x 3/4" FPH tapping screws

Options:

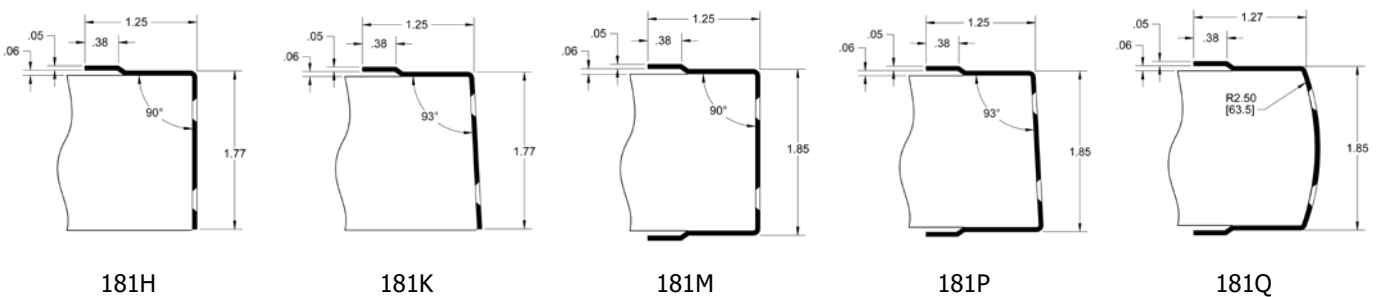
- Other lengths by quotation
- Hinge cutout available
- Latch cutout available
- UL rated edging available

Order:

- Provide actual rather than typical door thickness
- Provide item #, size and finish (i.e., 181H - 40"-32D)

Notes:

- Cutout will hand edging; specify handing information
- Standard edge guards are made for 1-3/4" +0, -1/32" thick doors



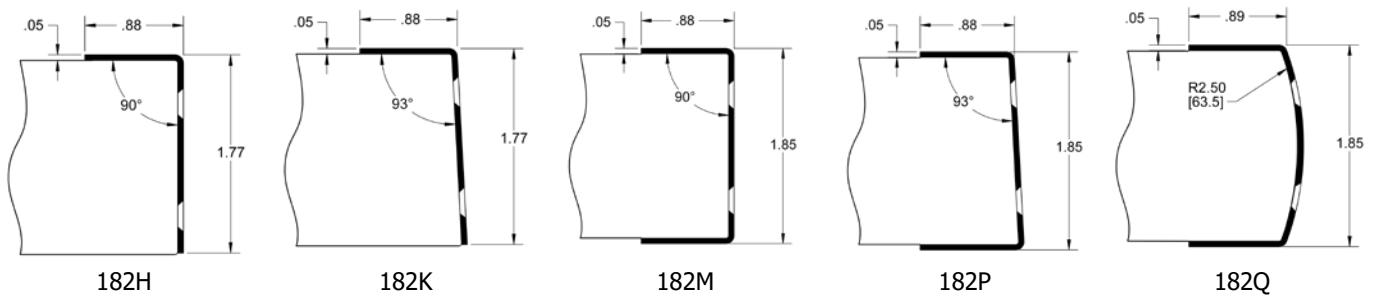


## DOOR EDGINGS & CORNER GUARDS

### 182H | 182K | 182M | 182P | 182Q

#### Non-Mortise Door Edging

- Certification: Meets ANSI A156.6 Door Edging Type J201 through J212
- Standard Length: 36" – 42" (914 mm – 1067 mm)
- Materials: Aluminum, stainless steel
- Gauge: 0.045" - 0.050" (1.1 mm - 1.3 mm)
- Finishes: US28, US32D
- Fasteners: #6 x 3/4" FPH tapping screws
- Options:
- Other lengths by quotation
  - Hinge cutout available
  - Latch cutout available
  - UL rated edging available
- Order:
- Provide actual rather than typical door thickness
  - Provide item #, size and finish (i.e., 182H - 40"-32D)
- Notes:
- Cutout will hand edging; specify handing information
  - Standard edge guards are made for 1-3/4" +0, -1/32" thick doors



### 185G

#### Corner Guard

- Certification: Meets ANSI A156.6 for J210
- Size: 3" x 3" x 40" (76 mm x 76 mm x 1016 mm)
- Gauge: 0.050" (1.3 mm)
- Materials: Aluminum, stainless steel
- Finishes: US28, US32D
- Fasteners: #6 x 3/4" FPHSMS self drilling screws
- Options: Mounting with double-stick tape instead of screws
- Notes:
- 90° bend standard
  - Other lengths by quotation

## DOOR PROTECTION PLATES



### Door Protection Plates

The metal door protection plates below meet ANSI A156.6 for J101 Metal Armor Plate, J102 Metal Kickplate, and J103 Metal Mop Plate. The plastic door protection plates below meet ANSI A156.6 for J105 Plastic Armor Plate, J106 Plastic Kickplate, and J107 Plastic Mop Plate. Options for all plates include countersunk holes, UL armor plate stamped, self-adhesive tape, spanner head screws, torx head screws, round corners, wrap around side and bottom return, and 0.125" (3.2 mm) material. All plates below are supplied standard with #6 x 5/8" truss head screws (unless specified otherwise). They are available in mop plate, kick plate, stretcher plate, and armor plate sizes.

- Mop Plate:** Protects the bottom of the pull side of doors subject to cleaning and mopping procedures.  
**Kick Plate:** Protects the bottom of the push side of doors subject to scuffing from foot traffic.  
**Stretcher Plate:** Protects doors in specific areas where constant contact is made by stretchers, service carts, or other equipment.  
**Armor Plate:** Protects lower half of doors from abuse by carts, trucks, and rough usage.

### NFPA 80 STANDARD 6.4.5.1/6.4.5.2 /6.4.5.3 Protection Plates

- Factory installed protection plates shall be installed in accordance with the listing of the door.
- Field installed protection plate shall be labeled and installed in accordance with their listing.
- Labeling is not required where the top of the protection plate is not more than 16" (406 mm) above the bottom of the door.

#### 190S

Thickness: 0.050" (1.3 mm)  
 U.S. Gauge: 18  
 Materials: Aluminum, brass, bronze, stainless steel  
 Finishes: US3<sup>1</sup>, US4<sup>1</sup>, US9, US10, DBZ, US19, US28, US32, US32D  
 Bevel: 4 edges  
 Options: UL Listed for US19, US32, US32D & DBZ\*  
 Round Corner - 196R

#### 198S

Thickness: 0.038" (0.8 mm)  
 U.S. Gauge: 20  
 Materials: Stainless steel  
 Finishes: US32D  
 Options: UL Listed\*

#### 199B

Thickness: 0.038" (0.8 mm)  
 U.S. Gauge: 20  
 Materials: Aluminum  
 Finishes: Bright gold anodized  
 Fasteners: #6 x 5/8" TPH Tapping Screws

#### 204S

Thickness: 0.125" (3.2 mm)  
 Materials: Clear plastic  
 Bevel: 4 edges

#### 214S

Thickness: 0.125" (3.2 mm)  
 Materials: Plastic laminate  
 Bevel: 4 edges  
 Colors: Black, Brown, Grey  
 Notes: Other colors are available and will be subject to minimum order quantities; priced on application

#### 220S

Thickness: 0.062" (1.6 mm)  
 U.S. Gauge: 16  
 Materials: Aluminum, brass, bronze, stainless steel US3<sup>1</sup>, US4<sup>1</sup>, US9, US10, DBZ, US19, US28, US32D (Diamond tread available in .063" polished aluminum only)  
 Bevel: 4 edges

#### 225S

Thickness: 0.060" (1.9 mm)  
 Materials: Kydex®  
 Colors: CBO - Calcutta Black, KGO - Beige, KHO - Chocolate  
 Notes: Other colors are available and will be subject to minimum order quantities; priced on application  
 Options: UL Listed\*

\*Must specify UL stamp. UL labeling not required when top of plate is less than 16" above the bottom of the door. Screw fasteners only. Maximum size 48" high by 46" wide.

<sup>1</sup>US3 and US4 are unavailable above 24" tall on products 190S & 220S





## WALL STOPS & HOLDERS



### **230W** **Convex Wall Stop**

Certification: Meets ANSI A156.16 for L02101  
 Diameter: 2-15/32" (63 mm)  
 Projection: 1-3/32" (28 mm)  
 Materials: Cast brass, bronze with grey rubber bumper  
 Finishes: US3, US4, US10, US10B, US15, US15A, US19, US26, US26D  
 Fasteners: One (1) #10 x 1-1/2" PPHWS with plastic and toggle anchor.  
 Notes:
 

- Concealed tamper proof mounting
- Easy installation by inserting screwdriver through small hole in bumper
- Specify 230T for machine screw and toggle nut screwpack (10 pk)



### **232W** **Convex Wall Stop**

Certification: Meets ANSI A156.16 for L02101  
 Diameter: 2-7/16" (62 mm)  
 Projection: 1" (25 mm)  
 Materials: Wrought brass, bronze, stainless steel with grey rubber bumper  
 Finishes: US3, US4, US5, US9, US10, US10B, US15, US15A, US19, US26, US26D, US32, US32D  
 Fasteners: One (1) #10 x 1-1/2" PPHWS with plastic and toggle anchor  
 Notes:
 

- Concealed tamper proof mounting
- Easy installation by inserting screwdriver through small hole in bumper
- Specify 230T for machine screw and toggle nut screwpack (10 pk)



### **234W** **Concave Wall Stop**

Certification: Meets ANSI A156.16 for L02251  
 Diameter: 2-15/32" (63 mm)  
 Projection: 1-3/32" (28 mm)  
 Materials: Cast brass, bronze with grey rubber bumper  
 Finishes: US3, US4, US10, US10B, US15, US15A, US19, US26, US26D  
 Fasteners: One (1) #10 x 1-1/2" PPHWS w/ plastic and toggle anchor  
 Notes:
 

- Easy installation by inserting screwdriver through small hole in rubber bumper
- Concealed tamper proof mounting
- Concave rubber bumper prevents damage to locksets with projecting buttons
- Specify 230T for machine screw and toggle nut screwpack (10 pk)



### **236W** **Concave Wall Stop**

Certification: Meets ANSI A156.16 for L02251  
 Diameter: 2-7/16" (75 mm)  
 Projection: 1" (25 mm)  
 Materials: Wrought brass, bronze, stainless steel with grey rubber bumper  
 Finishes: US3, US4, US5, US9, US10, US10B, US15, US15A, US19, US26, US26D, US32, US32D  
 Fasteners: One (1) #10 x 1-1/2" PPHWS w/ plastic and toggle anchor  
 Notes:
 

- Easy installation by inserting screwdriver through small hole in rubber bumper
- Concealed tamper proof mounting
- Concave rubber bumper prevents damage to locksets with projecting buttons
- Specify 230T for machine screw and toggle nut screwpack (10 Pk)

## WALL STOPS & HOLDERS



### 250W

#### Convex Wall Stop

Diameter: 1" (25 mm)  
 Projection: 9/16" (14 mm)  
 Materials: Cast brass  
 Finishes: US3, US4, US10, US10B, US15, US15A, US19, US26, US26D  
 Fasteners: One (1) #6 x 3/4" screw with plastic anchor and one (1) 0.052 diameter nail  
 Notes:
 

- Concealed mounting screw prevents vandalism
- For use on drywall
- Compact design



### 251W

#### Concave Wall Stop

Diameter: 1-7/8" (48 mm)  
 Projection: 25/32" (20 mm)  
 Materials: Adhesive backed rubber bumper  
 Finish: Grey only  
 Notes:
 

- Concave bumper prevents damage to locksets with projecting buttons
- For areas where concealed mounting is not required
- Adhesive backing for use on clean smooth flat surfaces only



### 254S

#### Wall Stop & Holder

Certification: Meets ANSI A156.16 for L01341  
 Base Diameter: 2-11/32" (60 mm)  
 Base Projection: 3-1/2" (89 mm)  
 Engaged Projection: 5-19/32" (142 mm)  
 Keeper: 1" x 2" (25 mm x 51 mm)  
 Materials: Cast brass with black rubber bumper  
 Finishes: US3, US10B, US26D  
 Fasteners: Five (5) #10 x 1" FPHWS, and three (3) plastic anchors  
 Notes:
 

- For use on drywall
- Manual holder ideal for interior and exterior applications
- Unit functions as a stop, but can serve as a "Hold Open" when hook is manually engaged
- Ideal for use with locksets with a projection of 3-5/16" (84 mm) or less



### 254W

#### Wall Stop & Holder

Certification: Meets ANSI A156.16 for L01351  
 Base Diameter: 2-11/32" (60 mm)  
 Base Projection: 3-1/2" (89 mm)  
 Engaged Projection: 5-19/32" (142 mm)  
 Keeper: 1" x 2" (25 mm x 51 mm)  
 Materials: Cast brass with black rubber bumper  
 Finishes: US10B, US26D  
 Fasteners: Three (3) #10 x 1" FPH tapping screw, one (1) plastic anchor, one (1) 5/16-18 x 2-1/2" threaded stud, and one (1) 5/16-18 lead anchor  
 Notes:
 

- For use on concrete walls
- Manual holder ideal for interior and exterior applications
- Unit functions as a stop, but can serve as a "Hold Open" when hook is manually engaged
- Ideal for use with locksets with a projection of 3-5/16" (84 mm) or less



## WALL STOPS & HOLDERS



### 255S

#### Wall Stop

- Certification: Meets ANSI A156.16 for L02011  
 Base Diameter: 2-11/32" (60 mm)  
 Projection: 3-11/16" (94 mm)  
 Materials: Cast brass with black rubber bumper  
 Finishes: US3, US4, US10, US10B, US15, US26, US26D  
 Fasteners: Three (3) #10 x 1" OPHWS and three (3) plastic anchors  
 Notes:
  - For use on drywall
  - Ideal for interior and exterior applications
  - Heavy duty - for use in high traffic areas
  - Ideal for use with locksets with a projection of 3" (76 mm) or less



### 255W

#### Wall Stop

- Certification: Meets ANSI A156.16 for L02021  
 Base Diameter: 2-11/32" (60 mm)  
 Projection: 3-11/16" (94 mm)  
 Materials: Cast brass with black rubber bumper  
 Finishes: US3, US4, US10, US10B, US15, US26, US26D  
 Fasteners: One (1) #10 x 1" OPHWS, one (1) plastic anchor, one (1) 5/16-18 lead anchor, one (1) 5/16-18 x 2-1/2" threaded stud, one (1) 5/16-18 x 2-1/2" combo threaded stud  
 Notes:
  - For use on concrete walls
  - Ideal for interior and exterior applications
  - Heavy duty - for use in high traffic areas
  - Ideal for use with locksets with a projection of 3" (76 mm) or less



### 256S

#### Manual Wall Stop & Holder

- Certification: Meets ANSI A156.16 for L01341  
 Base Diameter: 2-1/4" (57 mm)  
 Base Projection: 3-3/4" (95 mm)  
 Engaged Projection: 5-11/16" (145 mm)  
 Keeper: 25/32" x 1-1/2" (20 mm x 38 mm)  
 Materials: Cast brass with black rubber bumper  
 Finishes: US3, US10, US10B, US26D  
 Fasteners: Three (3) #10 x 1" OPHWS and three (3) plastic anchors  
 Notes:
  - For use on drywall
  - Ideal for interior and exterior applications
  - Heavy duty - for use in high traffic areas
  - Unit functions as a stop, but can serve as a "Hold Open" when hook is manually engaged
  - Ideal for use with locksets with a projection of 3" (76 mm) or less



## WALL STOPS & HOLDERS



### 256W

#### Manual Wall Stop & Holder

Certification: Meets ANSI A156.16 for L01351  
Base Diameter: 2-1/4" (57 mm)  
Base Projection: 3-3/4" (95 mm)  
Engaged Projection: 5-11/16" (145 mm)  
Keeper: 25/32" x 1-1/2" (20 mm x 38 mm)  
Materials: Cast brass with black rubber bumper  
Finishes: US3, US10, US10B, US15, US26, US26D  
Fasteners: One (1) #10 x 1" OPHWS, one (1) plastic anchor, one (1) 5/16-18 lead anchor, one (1) 5/16-18 x 2-1/2" threaded stud, and one (1) 5/16-18 x 2-1/2" combo threaded stud

- Notes:
- For use on concrete walls
  - Ideal for interior and exterior applications
  - Heavy duty - for use in high traffic areas
  - Unit functions as a stop, but can serve as a "Hold Open" when hook is manually engaged
  - Ideal for use with locksets with a projection of 3" (76 mm) or less



### 260W

#### Angled Wall Stop

Certification: Meets ANSI A156.16 for L02201  
Base: 2-3/16"x 2-15/16" (56 mm x 75 mm)  
Projection: 3-21/32" (93 mm)  
Materials: Cast brass with black rubber bumper  
Finishes: US26D  
Fasteners: Three (3) #14 x 1-1/2" FPHWS, three (3) 1/4-20 x 3/4" FPHMS, three (3) plastic anchors, and three (3) 1/4-20 lead anchors

- Notes:
- For use with drywall or concrete walls
  - Sloping design resists vandalism
  - Ideal for use with locksets with a projection of 3" (76 mm) or less



### 324W

#### Light Duty Wall Bumper

Certification: Meets ANSI A156.16 for L02031  
Base Diameter: 1-1/4" (32 mm)  
Projection: 3-1/4" (83 mm)  
Tip Diameter: 5/8" (16 mm)  
Materials: Cast brass, bronze with white rubber tip  
Finishes: US3, US4, US5, US10, US10B, US15, US15A, US19, US26, US26D  
Fastener: #10 x 7/8" wood thread

- Notes:
- Replaceable rubber tip available
  - Hex shape near the tip allows usage of a wrench for easier installation





## WALL STOPS & HOLDERS



### 326W

#### Automatic Wall Stop & Holder

Certification: Meets ANSI A156.16 for L01293  
 Holder Base: 2-13/32" x 2-25/32" (61 mm x 71 mm)  
 Holder Projection: 2-5/16" (59 mm)  
 Engaged Projection: 3-5/8" (92 mm)  
 Strike Base: 1" x 2-1/16" (25 mm x 52 mm)  
 Strike Projection: 2" (51 mm)  
 Keeper: 1" x 2" (25 mm x 51 mm)  
 Materials: Cast brass  
 Finishes: US10, US10B, US26, US26D  
 Fasteners: Five (5) #10 x 1" OPHWS, three (3) 10-24 x 1-1/4" FPHMS, and three (3) plastic anchors

#### Notes:

- For use with wood or metal doors
- Holder is mounted on the door
- Roller is spring loaded to seat on strike - heavy duty rubber pad dampens sound and shock
- Ideal for use with locksets with a projection of 3" (76 mm) or less



### 327W

#### Automatic Wall Stop & Holder

Certification: Meets ANSI A156.16 for L11291  
 Holder Base: 3-1/16" x 3-1/2" (78 mm x 89 mm)  
 Holder Projection: 1-15/16" (49 mm)  
 Engaged Projection: 3-1/2" (89 mm)  
 Strike Diameter: 2-3/8" (60 mm)  
 Strike Projection: 3-1/16" (78 mm)  
 Materials: Cast brass  
 Finishes: US3, US4, US10, US10B, US26, US26D  
 Fasteners: Three (3) #14 x 1-1/2" FPHWS, three (3) 1/4-20 x 3/4" FPHMS, four (4) 12-24 x 1" TPHMS, four (4) #12 x 1" TPHWS, and three (3) 1/4-20 lead anchors

#### Notes:

- For use with wood or metal doors
- For use with drywall or concrete walls
- Roller is spring loaded to seat on strike - heavy duty rubber pad dampens sound and shock
- Strike is adjustable 45° left or right
- Holder has vertical adjustment once mounted on the door
- Ideal for use with locksets with a projection of 3" (76 mm) or less
- For doors up to 500 lbs





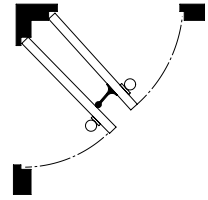
## ROLLER STOPS



### 271W

#### Roller Bumper

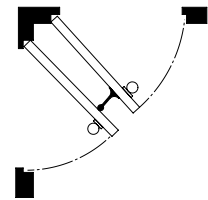
- Certification: Meets ANSI A156.16 for L02193  
 Base Diameter: 2" (51 mm)  
 Projection: 4-1/2" (114 mm)  
 Materials: Cast brass with grey rubber roller  
 Finishes: US10, US10B, US26, US26D  
 Fasteners: Three (3) #10 x 1" FPHWS and three (3) plastic anchors  
 Notes:
  - For use when two doors swing into each other at right angles (back to back)
  - Prevents damage to the door and door hardware



### 272W

#### Roller Bumper

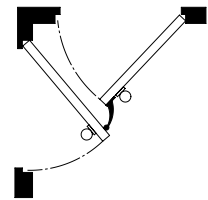
- Certification: Meets ANSI A156.16 for L02193  
 Base Diameter: 2" (51 mm)  
 Projection: 6-1/4" (159 mm)  
 Materials: Cast brass with grey rubber roller  
 Finishes: US10B, US26, US26D  
 Fasteners: Three (3) #10 x 1" FPHWS, and three (3) plastic anchors  
 Notes:
  - For use when two doors swing into each other at right angles (back to back)
  - Prevents damage to the door and door hardware



### 273W

#### Curved Roller Bumper

- Certification: Meets ANSI A156.16 for L12213  
 Projection: 2-21/32" (67 mm)  
 Materials: Cast brass with grey rubber roller  
 Finishes: US10B, US26D  
 Fasteners: Three (3) #10 x 1" FPHWS and three (3) plastic anchors  
 Notes:
  - Used when two doors swing into each other at odd angles
  - Prevents damage to the door and door hardware





## FLOOR STOPS & HOLDERS



### 241F

#### Dome Stop - Low

- Certification: Meets ANSI A156.16 for L02142  
 Base Diameter: 1-11/16" (43 mm)  
 Base Thickness: 1/8" (3.2 mm)  
 Overall Height: 1" (25 mm)  
 Materials: Cast brass with grey rubber bumper  
 Finishes: US3, US4, US5, US9, US10, US10B, US15, US15A, US19, US26, US26D  
 Fasteners: One (1) #14 x 1-1/2" FPHWS, one (1) 1/4-20 x 3/4" FPHMS, one (1) 1/4-20 lead anchor, and one (1) plastic anchor
- Notes:
- To be used independently or in conjunction with 246B
  - For use when no threshold is used (door not undercut)
  - For use with wood or concrete floors



### 242F

#### Dome Stop - Universal

- Certification: Meets ANSI A156.16 for L02142  
 Base Diameter: 1-11/16" (43 mm)  
 Base Thickness: 7/32" (5.5 mm)  
 Overall Height: 1-5/8 (41 mm)  
 Materials: Brass with grey rubber bumper  
 Finishes: US3, US4, US10B, US15, US19, US26, US26D  
 Fasteners: One (1) #14 x 1-1/2" FPHWS, one (1) 1/4-20 x 3/4" FPHMS, one (1) 1/4-20 lead anchor, and one (1) plastic anchor
- Notes: Does not work with 246B riser plate. For use with wood or concrete floor



### 243F

#### Dome Stop - High

- Certification: Meets ANSI A156.16 for L02162  
 Base Diameter: 1-11/16" (43 mm)  
 Base Thickness: 7/16" (11 mm)  
 Overall Height: 1-9/32" (33 mm)  
 Materials: Cast brass with grey rubber bumper  
 Finishes: US3, US4, US5, US9, US10, US10B, US15, US15A, US19, US26, US26D  
 Fasteners: One (1) #14 x 1-1/2" FPHWS, one (1) 1/4-20 x 1-1/4" FPHMS, one (1) 1/4-20 lead anchor, and one (1) plastic anchor
- Notes:
- For use with thresholds or undercut doors
  - For use with wood or concrete floors
  - To be used independently or with 246B



### 244F

#### Cast Floor Stop

- Certification: Meets ANSI A156.16 for L02141  
 Base: 1-3/4" x 4" (45 mm x 102 mm)  
 Base Thickness: 5/32" (4 mm)  
 Overall Height: 1" (25 mm)  
 Materials: Cast brass with grey rubber bumper  
 Finishes: US10B, US26, US26D  
 Fasteners: Two (2) #14 x 1-1/2" FPHWS, two (2) 1/4-20 x 3/4" FPHMS, two (2) 1/4-20 lead anchor, and two (2) plastic anchor
- Notes:
- Heavy duty - for use in high traffic areas
  - For use when no thresholds are used (door not undercut)
  - For use with wood or concrete floors



**FLOOR STOPS & HOLDERS**



**245F**

**Cast Floor Stop**

Certification: Meets ANSI A156.16 for L02161  
 Base: 1-3/4" x 4" (45 mm x 102 mm )  
 Base Thickness: 1/2" (13 mm)  
 Overall Height: 1-5/16" (33 mm)  
 Materials: Cast brass with grey rubber bumper  
 Finishes: US3, US4, US10, US10B, US26, US26D  
 Fasteners: Two (2) #14 x 1-1/2" FPHWS, two (2) 1/4-20 x 1-1/4" FPHMS, two (2) 1/4-20 lead anchor, and two (2) plastic anchor  
 Notes:
 

- Heavy duty - for use in high traffic areas
- For use with thresholds and undercut doors
- For use on wood or concrete floors



**246B**

**Dome Stop Riser Plate**

Diameter: 1-3/4" (45 mm)  
 Thickness: 3/8" (10 mm)  
 Fasteners: One (1) 1/4-20 x 1" FPHMS  
 Materials: Cast brass  
 Finishes: US3, US4, US10, US10B, US15, US15A, US19, US26, US26D  
 Notes: For use with 241F or 243F on undercut doors, doors with thresholds, and carpeted flooring



**248F**

**Modern Style Universal Stop**

Base Diameter: 1-7/16" (37 mm)  
 Height: 1-1/2" (38 mm)  
 Materials: Brass with black rubber bumper  
 Finishes: US26, US26D  
 Fasteners: One (1) #12 x 1-1/4" FPHWS, one (1) plastic anchor, one (1) 1/4-20 x 1" FPHMS, and one (1) 1/4-20 lead anchor



**248G**

**Modern Style Universal Stop**

Base Diameter: 1-7/16" (37 mm)  
 Height: 1-1/2" (38 mm)  
 Materials: Brass with grey rubber bumper  
 Finishes: US26D  
 Fasteners: One (1) #12 x 1-1/4" FPHWS with plastic anchor and one (1) 1/4-20 x 1" FPHMS with lead anchor



**249F**

**L-Shaped Floor Stop**

Base: 1" x 2-1/2" x 7/32" thick (25 mm x 64 mm x 6 mm)  
 Base Thickness: 1/4" (6 mm)  
 Overall Height: 2-5/8" (67 mm)  
 Stop face: Resilient black rubber  
 Materials: Steel  
 Fasteners: Two (2) #14 x 1-1/2" FPHWS and two (2) plastic anchors  
 Notes: 1-1/2" (38 mm) max door to floor clearance





## FLOOR STOPS & HOLDERS



### 252F

#### Floor Stop

- Certification: Meets ANSI A156.16 for L02131  
 Base: 1-9/16" x 2-1/2" (40 mm x 64 mm)  
 Overall Height: 2-11/16" (68 mm)  
 Materials: Cast brass with black rubber bumper  
 Finishes: US3, US10, US10B, US15, US15A, US19, US26, US26D  
 Fasteners: One (1) #14 x 1-1/2" FPHWS, one (1) 1/4-20 x 3/4" FPHMS, one (1) 5/16-18 lead anchor, one (1) 1/4-20 lead anchor, one (1) plastic anchor, one (1) 5/16-18 x 2-1/2" threaded stud, and one (1) 5/16-18 x 2-1/2" combo threaded stud
- Notes:
- Heavy duty - for use in high traffic areas
  - For use on wood or concrete floors
  - 2" (51 mm) max door to floor clearance



### 257F

#### Floor Stop

- Certification: Meets ANSI A156.16 for L02131  
 Base: 1-9/16" x 2-15/32" (40 mm x 63 mm)  
 Overall Height: 2" (51 mm)  
 Materials: Cast brass with black rubber bumper  
 Finishes: US3, US10, US10B, US15, US15A, US19, US26, US26D  
 Fasteners: One (1) #14 x 1-1/2" FPHWS, one (1) 1/4-20 x 3/4" FPHMS, one (1) 5/16-18 lead anchor, one (1) 1/4-20 lead anchors, one (1) plastic anchor, one (1) 5/16-18 x 2-1/2" threaded stud, and one (1) 5/16-18 x 2-1/2" combo threaded stud
- Notes:
- 1-3/8" (35 mm) max door to floor clearance
  - Heavy duty - for use in high traffic areas
  - For use on wood or concrete floors



### 258F

#### Floor Stop and Holder

- Certification: Meets ANSI A156.16 for L01371  
 Base: 1-9/16" x 2-15/32" (40 mm x 63 mm)  
 Height: 3" (76 mm)  
 Keeper: 1" x 2" (25 mm x 51 mm)  
 Materials: Cast brass with black rubber bumper  
 Finishes: US3, US10, US10B, US15, US26, US26D  
 Fasteners: Two (2) #10 x 1" FPHWS, one (1) 1/4-20 x 3/4" FPHMS, one (1) 5/16-18 lead anchor, one (1) 1/4-20 lead anchors, and one (1) 5/16-18 x 2-1/2" threaded stud
- Notes:
- 1-3/8" (35 mm) max door to floor clearance
  - Heavy duty - for use in high traffic areas
  - For use on concrete floors
  - Manual holder ideal for interior and exterior applications
  - Unit functions as a stop, but can serve as a "Hold Open" when hook is manually engaged



**FLOOR STOPS & HOLDERS**



**259F**

**Tri Base Floor Stop**

Certification: Meets ANSI A156.16 for L02121  
 Base: 2-1/2" wide x 1-9/16" deep (64 mm x 40 mm)  
 Overall Height: 1-11/16" (43 mm)  
 Material: Cast brass with grey rubber bumper  
 Finishes: US10B, US26D  
 Fasteners: Three (3) #10 x 1-1/4" FPHWS, three (3) plastic anchors, three (3) 10-32 x 3/4" FPHMS, and three (3) 10-32 lead anchor  
 Notes:
 

- 1/2" (13 mm) max door to floor clearance
- Heavy duty - for use in high traffic areas
- For use on wood or concrete floors



**259H**

**Tri Base Floor Stop - Tall**

Certification: Meets ANSI A156.16 for L02121  
 Base: 2-1/2" wide x 1-9/16" deep (64 mm x 40 mm)  
 Overall Height: 2-1/4" (57 mm)  
 Materials: Cast brass with grey rubber bumper  
 Finishes: US26D  
 Fasteners: Three (3) #10 x 1-1/4" FPHWS, three (3) plastic anchor, three (3) 10-32 x 3/4" FPHMS, and three (3) 10-32 lead anchors  
 Notes:
 

- 1" (25 mm) max door to floor clearance
- Heavy duty - for use in high traffic areas
- For use on wood or concrete floors



**267F**

**Cast Floor Stop**

Certification: Meets ANSI A156.16 for L02131  
 Base Diameter: 2-1/4" (57 mm)  
 Overall Height: 3-1/8" (80 mm)  
 Materials: Cast brass with black rubber bumper  
 Finishes: US3, US10, US10B, US15, US15A, US19, US26, US26D  
 Fasteners: One (1) #10 x 1" OPHWS, one (1) plastic anchor, one (1) 5/16-18 lead anchor, one (1) 5/16-18 x 2-1/2" threaded stud, and one (1) 5/16-18 x 2-1/2" combo threaded stud  
 Notes:
 

- 2-3/8" (60 mm) max door to floor clearance
- Heavy duty - for use in high traffic areas
- For use on concrete floors



**267S**

**Cast Floor Stop**

Certification: Meets ANSI A156.16 for L02121  
 Base Diameter: 2-1/4" (57 mm)  
 Overall Height: 3-1/8" (80 mm)  
 Materials: Cast brass with black rubber bumper  
 Finishes: US3, US10, US10B, US15, US15A, US19, US26, US26D  
 Fasteners: Three (3) #10 x 1" OPHWS and three (3) plastic anchors  
 Notes:
 

- 2-3/8" (60 mm) max door to floor clearance
- Heavy duty - for use in high traffic areas
- For use on wood floors





## FLOOR STOPS & HOLDERS



### 268F

#### Cast Floor Stop and Holder

- Certification: Meets ANSI A156.16 for L01371  
 Base Diameter: 2-1/4" (57 mm)  
 Height: 3-19/32" (91 mm)  
 Keeper: 25/32" x 1-1/2" (20 mm x 38 mm)  
 Materials: Cast brass with black rubber bumper  
 Finishes: US3, US10, US10B, US15, US15A, US19, US26, US26D  
 Fasteners: Three (3) #10 x 1" OPHWS, one (1) plastic anchor, one (1) 5/16-18 lead anchor, and one (1) 5/16-18 x 2-1/2" threaded stud
- Notes:
- 2-1/2" (64 mm) max door to floor clearance
  - Heavy duty - for use in high traffic areas
  - For use on concrete floors
  - Manual holder ideal for interior and exterior applications
  - Unit functions as a stop, but can serve as a "Hold Open" when hook is manually engaged



### 268S

#### Cast Floor Stop and Holder

- Certification: Meets ANSI A156.16 for L01361  
 Base Diameter: 2-1/4" (57 mm)  
 Height: 3-19/32" (91 mm)  
 Keeper: 25/32" x 1-1/2" (20 mm x 38 mm)  
 Materials: Cast brass with black rubber bumper  
 Finishes: US3, US10, US10B, US15, US15A, US19, US26, US26D  
 Fasteners: Five (5) #10 x 1" OPHWS and three (3) plastic anchors
- Notes:
- 2-1/2" (64 mm) max door to floor clearance
  - Heavy duty - for use in high traffic areas
  - For use on wood floors
  - Manual holder ideal for interior and exterior applications
  - Unit functions as a stop, but can serve as a "Hold Open" when hook is manually engaged



### 269F

#### Heavy Duty Floor Stop

- Certification: Exceeds the criteria set forth for a 300-pound impact test (Report #91-04-01646)  
 Bumper Diameter: 2" (51 mm)  
 Bumper Height: 1-1/2" (38 mm)  
 Steel Bolt: 5/8 - 11 x 2-1/2" thread  
 Materials: Black rubber (fire-resistant)
- Notes:
- Designed for high vandalism areas
  - Ideal for prisons where floor stops are required
  - Grouted in concrete to eliminate exposed screws



## FLOOR STOPS & HOLDERS



### **269T** **Heavy Duty Floor Stop**

Certification:	Exceeds the criteria set forth for a 300-pound impact test (Report #91-04-01646)
Bumper Diameter:	2" (51 mm)
Bumper Height:	3-1/2" (89 mm)
Steel Bolt:	5/8 – 11 x 2-1/2" thread
Materials:	Black rubber (fire-resistant)
Notes:	<ul style="list-style-type: none"><li>• Designed for high vandalism areas</li><li>• Ideal for prisons where floor stops are required</li><li>• Grouted in concrete to eliminate exposed screws</li></ul>



### **326F** **Automatic Floor Stop and Holder**

Certification:	Meets ANSI A156.16 for L01301
Holder Projection:	1-15/16" (49 mm)
Holder Base:	3-1/16" x 3-1/2" (78 mm x 89 mm)
Floor Strike:	2" x 4-3/32" (51 mm x 104 mm)
Strike Height:	1-1/4" (32 mm)
Max Door to Floor Clearance:	1/2" (13 mm) or less
Materials:	Cast brass
Finishes:	US3, US10, US10B, US26, US26D
Fasteners:	Three (3) #14 x 1-1/2" FPHWS, three (3) 1/4-20 x 3/4" FPHMS, three (3) 1/4-20 lead anchors, four (4) 12-24 x 1" TPHMS, and four (4) #12 x 1" TPHWS
Notes:	<ul style="list-style-type: none"><li>• For use on wood or metal doors and wood or concrete floors</li><li>• Ideal for heavy traffic situations that require frequent hold open</li><li>• Firm pull releases holding mechanism</li><li>• Holder has vertical adjustment once mounted on the door</li></ul>



### **327F** **Automatic Floor Stop and Holder**

Certification:	Meets ANSI A156.16 for L01301
Holder Projection:	1-15/16" (49 mm)
Holder Base:	3-1/16" x 3-1/2" (78 mm x 89 mm)
Floor Strike:	2-3/16" x 4-1/8" (56 mm x 105 mm)
Strike Height:	1-3/4" (44 mm)
Max Door to Floor Clearance:	9/16" to 1-1/16" (14 mm to 27 mm)
Materials:	Cast brass
Finishes:	US3, US10B, US26D
Fasteners:	Three (3) #14 x 1-1/2" FPHWS, three (3) 1/4-20 x 3/4" FPHMS, three (3) 1/4-20 lead anchors, four (4) 12-24 x 1" TPHMS, and four (4) #12 x 1" TPHWS
Notes:	<ul style="list-style-type: none"><li>• For use on wood or metal doors and wood or concrete floors</li><li>• Ideal for heavy traffic situations that require frequent hold open</li><li>• Firm pull releases holding mechanism</li><li>• Holder has vertical adjustment once mounted on the door</li></ul>





## FLOOR STOPS & HOLDERS



### 328F

#### Automatic Floor Stop and Holder

Certification: Meets ANSI A156.16 for L01301  
 Holder Projection: 1-15/16" (49 mm)  
 Holder Base: 3-1/16" x 3-1/2" (78 mm x 89 mm)  
 Floor Strike: 2-3/16" x 4-1/8" (56 mm x 105 mm)  
 Strike Height: 2-1/4" (57 mm)  
 Max Door to Floor Clearance: 1-1/8" to 1-9/16" (29 mm to 40 mm)  
 Materials: Cast brass  
 Finishes: US3, US10B, US26D  
 Fasteners: Three (3) #14 x 1-1/2" FPHWS, three (3) 1/4-20 x 3/4" FPHMS, three (3) 1/4-20 lead anchors, four (4) 12-24 x 1" TPHMS, and four (4) #12 x 1" TPHWS

- Notes:
- For use on wood or metal doors and wood or concrete floors
  - Ideal for heavy traffic situations that require frequent hold open
  - Firm pull releases holding mechanism
  - Holder has vertical adjustment once mounted on the door



### 329F

#### Automatic Floor Stop and Holder

Certification: Meets ANSI A156.16 for L01301  
 Holder Projection: 1-15/16" (49 mm)  
 Holder Base: 3-1/16" x 3-1/2" (78 mm x 89 mm)  
 Floor Strike: 2-3/16" x 4-1/8" (56 mm x 105 mm)  
 Strike Height: 2-3/4" (70 mm)  
 Max Door to Floor Clearance: 1-5/8" to 2-1/16" (41 mm to 52 mm)  
 Materials: Cast brass  
 Finishes: US3, US10, US10B, US26, US26D  
 Fasteners: Three (3) #14 x 1-1/2" FPHWS, three (3) 1/4-20 x 3/4" FPHMS, three (3) 1/4-20 lead anchors, four (4) 12-24 x 1" TPHMS, and four (4) #12 x 1" TPHWS

- Notes:
- For use on wood or metal doors and wood or concrete floors
  - Ideal for heavy traffic situations that require frequent hold open
  - Firm pull releases holding mechanism
  - Holder has vertical adjustment once mounted on the door





## KICK DOWN DOOR STOPS



### 270C

#### Kick Down Door Holder

- Certification: Meets ANSI A156.16 for L71382  
 Base: 1-7/16" x 2-1/8" (37 mm x 54 mm)  
 Arm: 3-13/16" (97 mm)  
 Materials: Cast iron with rubber tip  
 Finishes: S1 - Sprayed Aluminum, S2 - Sprayed Brass, S3 - Sprayed Bronze  
 Fasteners: Four (4) #6 x 3/4" OPH tapping screws  
 Notes:
  - Provides simple hold and release with a touch of the foot
  - 2-1/4" (57 mm) max door to floor clearance



### 270D

#### Kick Down Door Holder

- Certification: Meets ANSI A156.16 for L01381  
 Base: 1-19/32" x 1-25/32" (41 mm x 45 mm)  
 Arm: 3-1/2" (89 mm)  
 Materials: Cast brass with rubber tip  
 Finishes: US3, US10, US10B, US15, US19, US26, US26D Three  
 Fasteners: (3) #6 x 3/4" OPHWS  
 Notes:
  - Provides simple hold and release with a touch of the foot
  - 2-1/4" (57 mm) max door to floor clearance



### 270R

#### Replacement Rubber Tip

- Materials: Rubber  
 Notes:
  - For use with 270D and 271D
  - Sold in packs of 10



### 270CR

#### Replacement Rubber Tip

- Materials: Rubber  
 Notes:
  - For use with 270C
  - Sold in packs of 6



### 271D

#### Kick Down Door Holder

- Certification: Meets ANSI A156.16 for L01381  
 Base: 1-19/32" x 1-25/32" (41 mm x 45 mm)  
 Arm: 4-7/16" (87 mm)  
 Materials: Cast brass with rubber tip  
 Finishes: US3, US10, US10B, US26, US26D  
 Fasteners: Three (3) #6 x 3/4" OPHWS  
 Notes:
  - Provides simple hold and release with a touch of the foot
  - 3-1/4" (83 mm) max door to floor clearance





## SURFACE BOLTS



### 275D | 276D

#### Surface Bolt

Certification: Meets ANSI A156.16 for L04161  
 Overall Projection: 1-3/8" (35 mm)  
 Overall Width: 2-1/32" (52 mm)  
 Bar: 3/4" x 1/4" (19 mm x 6 mm) thick  
 Length: 275D - 8" (203 mm)  
 276D - 12" (305 mm)  
 Throw: 1" (25 mm)  
 Materials: Steel  
 Finishes: US3, US10B, US26D  
 Fasteners: Eight (8) #10 x 1-1/4" FPHWS and eight (8) 10-24 x 1" undercut FPHMS

#### Notes:

- Mortise bottom strike and universal top strike included
- Strong tension springs prevent creep
- UL listed for use on inactive leaf of a pair of 3-HR labeled fire doors



### 278D

#### Surface Bolt

Bolt Length: 6" (152 mm)  
 Bolt Width: 7/16" (11 mm)  
 Bolt Throw: 31/32" (25 mm)  
 Base Width: 19/32" (15 mm)  
 Knob Diameter: 1/2" (13 mm)  
 Projection: 3/4" (19 mm)  
 Materials: Brass  
 Finishes: US3, US10B, US26D  
 Fasteners: Four (4) #5 x 5/8" FPHWS

#### Notes:

- Mortise and universal strikes included
- Concealed screw design enhances appearance and security
- Permanent stop prevents bolt disengagement from track



### 279D

#### Surface Bolt

Length: 4" (102 mm)  
 Width: 1-11/16" (43 mm)  
 Throw: 3/8" (10 mm)  
 Half Round Bolt Size: 5/8" (16 mm)  
 Projection: 1-1/4" (32 mm)  
 Knob Diameter: 29/32" (23 mm)  
 Materials: Brass  
 Finishes: US10B, US26D  
 Fasteners: Twelve (12) #6 x 3/4" FPHWS

#### Notes:

Mortise and universal strikes included

## FLUSH BOLTS & COORDINATING DEVICES



### 280X Dust Proof Strike

Certification:	Meets ANSI A156.16 for L04021
Face Plate:	1-7/16" x 2-29/32" x 1/8" depth (37 mm x 74 mm x 3 mm)
Barrel Diameter:	1" (25 mm)
Barrel Depth:	2-3/16" (56 mm)
Plunger Diameter:	3/4" (19 mm)
Materials:	Brass
Finishes:	US3, US4, US9, US10, US10B, US15, US15A, US19, US26, US26D
Fasteners:	Two (2) #8 x 1" FPHWS, two (2) plastic anchors, and spanner wrench
Notes:	<ul style="list-style-type: none"> <li>• Packed unassembled with plate, strike, fasteners, and spanner wrench</li> <li>• May be used with carpet or threshold application by omitting face plate</li> <li>• Designed for use with the bottom bolt of a flushbolt set</li> <li>• Spring loaded plunger returns to floor or threshold level anytime flushbolt is retracted, eliminating the need to clean out the bottom strike</li> </ul>



### 281D Slide Flush Bolt

Certification:	Meets ANSI A156.16 for L04201
Faceplate:	3/4" x 6" (19 mm x 153 mm)
Bolt Diameter:	1/2" (13 mm)
Bolt Throw:	1" (25 mm)
Bolt Backset:	7/16" (11 mm)
Strike:	7/8" x 1-3/4" (22 mm x 45 mm)
Materials:	Brass, bronze faceplate with steel components
Finishes:	US3, US4, US5, US10, US10B, US15, US15A, US19, US26, US26D
Fasteners:	Four (4) #6 x 3/4" FPHWS
Notes:	Double action spring design provides automatic holding of bolt in projected or retracted position



### 282D Manual Flush Bolt

Certification:	<ul style="list-style-type: none"> <li>• Fits ANSI A115 door and frame prep</li> <li>• Meets ANSI A156.16 for L14251</li> </ul>
Face Plate:	1" x 6-3/4" (25 mm x 172 mm)
Bolt Head:	1/2" (13 mm) square
Bolt Throw:	3/4" (19 mm)
Standard Rod Length:	12" (305 mm) (center of face to corner of door)
Bolt Backset:	3/4" (19 mm)
Mortise Strike:	15/16" x 2-1/4" (24 mm x 57 mm)
Materials:	Brass faceplate with steel components
Finishes:	US3, US4, US5, US9, US10, US10B, US15, US15A, US19, US26, US26D
Fasteners:	Eight (8) #8 x 3/4" combo screws; eight (8) #8 x 1-1/2" combo screws
Notes:	<ul style="list-style-type: none"> <li>• For use on hollow metal/fire-rated doors</li> <li>• Non-handed</li> <li>• Bolt head rods are adjustable</li> <li>• Priced as each and sold in increments of two</li> <li>• 3 hour fire rating for metal doors up to 4 feet wide by 10 feet tall</li> <li>• 282S strike plate bag and 282P bolt head available</li> <li>• Specify 282R for optional rod length of 18" (457 mm), 24" (610 mm), or 30" (762 mm) (bolt head not included)</li> </ul>





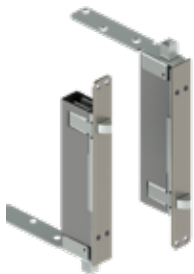
## FLUSH BOLTS & COORDINATING DEVICES



### 283D

#### Manual Flush Bolt

- Certification: Meets ANSI A156.16 for L14261  
 Face Plate: 1" x 6-25/32" (25 mm x 172 mm)  
 Bolt Head: 1/2" (13 mm) square  
 Bolt Throw: 3/4" (19 mm)  
 Bolt Backset: 3/4" (19 mm)  
 Mortise Strike: 15/16" x 2-1/4" (24 mm x 57 mm)  
 Materials: Brass faceplate with steel components  
 Finishes: US3, US4, US5, US10, US10B, US15, US19, US26, US26D Eight (8) #8  
 Fasteners: x 3/4" combo screws  
 Notes:
  - For use on wood composite/ fire-rated doors
  - Non-handed
  - Bolt head rods are adjustable
  - 1-1/2 hour fire rating for wood doors up to 4 feet wide by 10 feet tall



### 291D

#### Automatic Flush Bolt Set for Wood Covered Composite Doors

- Certification: B Label  
 ANSI A156.3 Type #25  
 Face Plate: 1" x 8-1/2" (25.5 mm x 216 mm)  
 Bolt Head: 1/2" (12.5 mm) square  
 Bolt Throw: 3/4" (19 mm)  
 Bolt Backset: 3/4" (19.5 mm)  
 Mortise Strike: 15/16" x 2-1/4" (24.5 mm x 56.8 mm)  
 Materials: Stainless steel and brass with steel components  
 Finishes: US10B, US32D  
 Notes:
  - Thermal lock automatically locks inactive door under high fire/heat conditions
  - 280X dust proof strikes are recommended for use with these sets
  - Used in pairs at top and bottom of inactive door
  - Fully automatic – bolts retract when active door is opened; bolts extend when active door is closed
  - Non-handed
  - Bolt head rods are adjustable
  - 1-1/2-hour fire rating for wood doors up to 4 feet wide by 8 feet tall
  - To only be used with un-beveled doors

## FLUSH BOLTS & COORDINATING DEVICES

### 292D

#### Automatic Flush Bolt Set for Metal Doors

Certification: ANSI A156.3 Type #25  
 Face Plate: 1" x 6-3/4" (25.6 mm x 171.8 mm)  
 Bolt Head: 1/2" (12.5 mm) square  
 Bolt Throw: 3/4" (19 mm)  
 Bolt Backset: 3/4" (19.5 mm)  
 Mortise Strike: 15/16" x 2-1/4" (24.5 mm x 56.8 mm) Stainless  
 Materials: steel and brass with steel components US10B,  
 Finishes: US32D

#### Notes:

- Contains two 292 flush bolts
- Thermal lock automatically locks inactive door under high fire/heat conditions
- 280X dust proof strikes are recommended for use with these sets
- Used in pairs at top and bottom of inactive door
- Fully automatic – bolts retract when active door is opened; bolts extend when active door is closed
- Non-handed
- Bolt head rods are adjustable
- 3-hour fire rating for metal doors up to 4 feet wide by 8 feet tall
- To only be used with un-beveled doors



### 293D

#### Self-Latching and Automatic Flush Bolts for Inactive Metal Doors

Certification: ANSI A156.3 Type #25 and ANSI A156.16 Type #27  
 Face Plate: 1" x 6-3/4" (25.6 mm x 171.8 mm)  
 Bolt Head: 1/2" (12.5 mm) square  
 Bolt Throw: 3/4" (19 mm)  
 Bolt Backset: 3/4" (19.5 mm)  
 T- Strike: 1-1/8" x 2-3/4" (28.6 mm x 70 mm)  
 Materials: Stainless steel with steel components  
 Finishes: US10B, US32D

#### Notes:

- Contains 1 ea 292S and 1 ea 293S
- Thermal lock automatically locks inactive door under high fire/heat conditions
- 280X dust proof strikes are recommended for use with these sets
- Consists of one 292S and one 293S for two point latching
- Inactive door remains latched until the active door is opened, releasing the automatic bottom bolt - Top bolt can be manually released by pressing plunger - Inactive door will relatch automatically when closed
- Non-handed
- Bolt head rods are adjustable
- 3-hour fire rating for metal doors up to 4 feet wide by 8 feet tall
- To only be used with un-beveled doors





## FLUSH BOLTS & COORDINATING DEVICES



### 294D

#### Self-Latching and Automatic Flush Bolts for Inactive Wood Covered Composite Doors

Certification: B Label  
ANSI A156.3 Type #25 and ANSI A156.16 Type #27

Face Plate: 1" x 8-1/2" (25.5 mm x 216 mm)

Bolt Head: 1/2" (12.5 mm) square

Bolt Throw: 3/4" (19 mm)

Bolt Backset: 3/4" (19.5 mm)

T- Strike: 1-1/8" x 2-3/4" (28.6 mm x 70 mm)

Materials: Stainless steel with steel components

Finishes: US10B, US32D

- Notes:
- Thermal lock automatically locks inactive door under high fire/heat conditions
  - 280X Dust Proof Strikes are recommended for use with these sets
  - Consists of one 291S and one 294S for two point latching
  - Inactive door remains latched until the active door is opened, releasing the automatic bottom bolt - Top bolt can be manually released by pressing plunger- Inactive door will relatch automatically when closed
  - Non-handed
  - Bolt head rods are adjustable
  - 1-1/2 hour fire rating for wood doors up to 4 feet wide by 8 feet tall
  - To only be used with un-beveled doors



### 295M

#### Automatic Flush Bolt Set with Fire Bolt for Metal Doors

Certification: ANSI/BHMA 156.3 Type #25

Face Plate: 1" x 6-3/4" (25.6 mm x 171.8 mm)

Bolt Head: 1/2" (12.5 mm) square

Bolt Throw: 3/4" (19 mm)

Bolt Backset: 3/4" (19 mm)

Mortise Strike: 15/16" x 2-1/4" (24.5 mm x 56.8 mm)

Materials: Stainless steel with steel components US10B, US32D

- Notes:
- Fire bolt is activated at 428°F (220°C), projecting into active door, locking leaves together - This combination eliminates the bottom flush bolt and eliminates floor preparation
  - Fully automatic – Bolt retracts when active door is opened - Bolt extends when active door is closed
  - Non-handed
  - Bolt head rods are adjustable
  - 3-hour fire rating for metal doors up to 4 feet wide by 8 feet tall
  - To only be used with un-beveled doors

## FLUSH BOLTS & COORDINATING DEVICES



### 295W

#### Automatic Flush Bolt Set with Fire Bolt for Wood Doors

Certification: ANSI/BHMA 156.3 Type #25  
 Face Plate: 1" x 8-1/2" (25.5 mm x 216 mm)  
 Bolt Head: 1/2" (12.5 mm) square  
 Bolt Throw: 3/4" (19 mm)  
 Bolt Backset: 3/4" (19.5 mm)  
 Mortise Strike: 15/16" x 2-1/4" (24.5 mm x 56.8 mm)  
 Materials: Stainless steel with steel components  
 Finishes: US10B, US32D

#### Notes:

- Fire bolt is activated at 428°F (220°C), projecting into active door, locking leaves together - This combination eliminates the bottom flush bolt and eliminates floor preparation
- Fully automatic – Bolt retracts when active door is opened - Bolt extends when active door is closed
- Non-handed
- Bolt head rods are adjustable
- 20-min fire rating for wood doors up to 4 feet wide by 8 feet tall
- To only be used with un-beveled doors



### 296D

#### Universal Automatic Flush Bolt Set for Metal & Wood Doors

Certification: ANSI/BHMA 156.3 Type #25  
 Face Plate: 1-3/32" x 2-1/4" (28 mm x 57 mm)  
 Bolt Head: 1/2" (12.7 mm) diameter  
 Bolt Throw: 3/4" (19 mm)  
 Bolt Backset: 1-1/2" (38.2 mm)  
 Materials: Stainless steel with steel components  
 Finishes: US10B, US32D  
 Strike: 1-3/32 x 2-1/4" (28 mm x 57 mm)

#### Notes:

- Non-handed
- ADA compliant
- Ideal for wood veneer doors
- Only two (2) 1-5/32" diameter holes needed for easier door preparation
- Opening active door retracts top and bottom bolts
- Smaller profile adds stability to the door
- 3-hour fire rating on metal doors up to 4' wide x 8' tall
- 1-1/2 hour fire rating for wood doors up to 4' wide by 8' tall
- To only be used with un-beveled doors





## FLUSH BOLTS & COORDINATING DEVICES



### 297C Carry-Open Bar

Projection:  
Base:  
Materials:  
Finishes:  
Fasteners:  
Notes:

13/16" (21 mm)  
1-3/4" x 2-7/32" (44.7 mm x 56.1 mm)  
Steel and Stainless Steel  
US10B, US32D  
Two (2) 1/4"-20 x 3/4" PPHM w/ Sex Bolts

- Used when it is possible for the inactive door to be opened before the active door
- For use on pairs of doors with astragals
- For use in conjunction with a 297D or 298D coordinator
- Prevents damage to the doors and other hardware
- Carry-Open Bar is not needed when the inactive door is equipped with automatic or self-latching flush bolts
- Non-handed



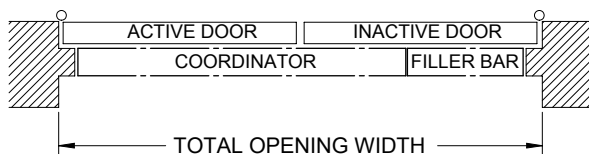
### 297D Coordinating Device

Certification:  
Base:  
Maximum Astragal Overlap:  
Stop Height:  
Materials:  
Finishes:  
Notes:



ANSI/BHMA A156.3 Type #21A  
1-5/8" x 5/8" (41 mm x 16 mm)  
1" (25 mm)  
5/8" (16 mm)  
Steel  
Black Powder Coat

- For use with total opening widths 60" (1524 mm), 72" (1829 mm), or 96" (2438 mm), consult Hager Customer Service if total opening width is different than our stock sizes
- Coordinating device is 52" (1321 mm) long for all stock sizes 60" (1524 mm), 72" (1829 mm), or 96" (2438 mm)
- Filler bar is cut to length by factory to match customers total opening width
- Non-handed
- Designed for use on pairs of doors when one door needs to close before the other
- Active door lever, located nearest to the active stop, holds the active door open until the trigger mechanism is released by the closing of the inactive leaf
- Coordinator may not span the entire length of stop, 297F filler bar may be needed to fill up the extra space
- Compatible with flush bolts
- Optional mounting brackets 297M or 297N may be used when mounting other soffit applied hardware
- For use with active door widths 30" (762 mm) – 48" (1219 mm)
- If active and inactive doors are unequal in length, consult Hager Customer Service for proper sizing
- Do not use spring hinges with coordinating device







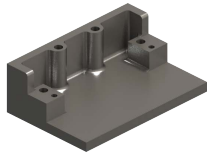
**FLUSH BOLTS & COORDINATING DEVICES**



**297F**

**Filler Bar**

Stop Height: 5/8" (16 mm)  
 Material: Steel  
 Finishes: Black Powder Coat  
 Length: 18-5/8" (473 mm) (for total opening widths 54" – 72");  
 42-5/8" (1083 mm) (for total opening widths 73" – 96")  
 Notes: For use with 297D coordinator

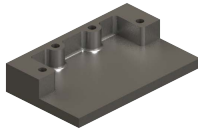


**297M**

**Mounting Bracket**

Stop Height: 5/8" (16 mm)  
 Material: Aluminum  
 Finishes: Black Powder Coat  
 Notes:
 

- For use with 297D coordinator
- For all soffit width 7/8" (22mm) - 2-1/4" (57mm)
- Allows soffit mounted hardware to be properly installed without damaging the coordinator, such as a parallel arm closer or a non-fire-rated surface vertical rod strike



**297N**

**Mounting Bracket**

Stop Height: 5/8" (16 mm)  
 Material: Aluminum  
 Finishes: Black Powder Coat  
 Notes:
 

- For use with 297D coordinator
- For all soffit width greater than 2-1/4" (57mm)
- Allows soffit mounted hardware to be properly installed without damaging the coordinator, such as a parallel arm closer or a non-fire-rated surface vertical rod strike



**298D**

**Gravity Coordinator**

Certification: ANSI A156.3 Type #21B  
 Base: 5-1/2" x 1-1/8" (140 mm x 29 mm)  
 Projection: 7" (178 mm)  
 Rail Height: 2-1/2" (64 mm) min  
 Materials: Cast brass with rubber roller and nylon cam roller  
 Finishes: US3, US10, US10B, US26D  
 Fasteners: Two (2) #12 x 1" OPHWS, two (2) #6 x 3/4" FPHWS, two (2) #8 x 3/4" TPHWS, and one (1) #6 x 3/4" FPHWS

Notes:
 

- Non-handed
- Recommended for use with flush top metal doors only
- Use automatic flush bolts only
- Use 297D if using self latching flush bolts
- Gravity arm and door bracket are adjustable on the job for ease of installation
- For use on pairs of doors with astragal on active door up to 4' (1219 mm) wide or with astragal on inactive door up to 3'-4" (1016 mm) wide or with astragal on both doors up to 2'-10" (864 mm) wide
- Maximum astragal overlap - 7/8" (22 mm)
- Do not use spring hinges with coordinating device



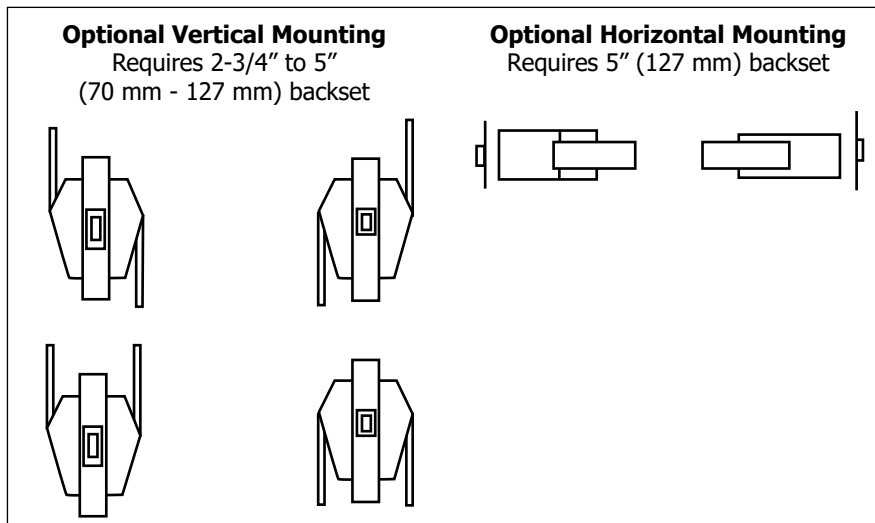


## LATCHES & PROTECTION PLATES



### 311H Push/Pull Latch

- Certification: ANSI A156.2 Closest Equivalent  
(Bored Latch - Series 4000 - Grade 2)
- Push & Pull Levers: 1-15/16" x 4-1/2" (49 mm x 114 mm)
- Escutcheons: 3-1/16" x 5" (78 mm x 127 mm)
- Projection: 2-5/8" (67 mm)
- Bolt Throw: 1/2" (13 mm)
- Bolt Diameter: 3/4" (19 mm)
- Backset:
  - 2-3/4" (70 mm) - Standard
  - 5" (127 mm) - Optional
- Strike (TEE) - standard: 1-1/8" x 2-3/4" (29 mm x 70 mm)
- Strike (ASA) - standard: 1-1/4" x 4-7/8" (32 mm x 124 mm)
- Door thickness: 1-3/4" (45 mm)
- Materials: Zinc and stainless steel
- Finishes: US26, US26D, US32, US32D
- Notes:
  - Non-handed
  - Engraving is optional



### 318D Roller Latch with Tee Strike

- Certification: Meets ANSI A156.16 for E09091
- Roller Faceplate: 1" x 3-3/8" (25 mm x 86 mm)
- Strike: 1-1/8" x 2-3/4" (29 mm x 70 mm)
- Strike Gauge: 0.171" (4.3 mm)
- Materials: Brass
- Finishes: US3, US4, US10, US10B, US15, US19, US26, US26D
- Fasteners: Two (2) #10 x 1-1/2" FPHWS, two (2) #8 x 1" FPHWS, and two (2) 8-32 x 3/4" FPHMS
- Notes:
  - Adjustable spring tension with nylon roller
  - Projection of roller is easily adjusted using screws on faceplate
  - Max projection of the roller is 3/8" (9.5 mm) allowing for variance in door and frame clearance

## LATCHES & PROTECTION PLATES



### 318S

#### Roller Latch with Stop

- Certification: Meets ANSI A156.16 for E0911
- Roller Faceplate: 1-7/16" wide x 4-7/16" high x 11/16" angle (37 mm x 111 mm x 18 mm)
- Strike: 1-1/8" x 2-1/4" (29 mm x 57 mm)
- Strike Gauge: 0.171" (4.3 mm)
- Materials: Brass
- Finishes: US3, US4, US10, US10B, US15, US26, US26D
- Fasteners: Two (2) #10 x 1-1/2" FPHWS and two (2) 8-32 x 3/4" FPHMS
- Notes:
  - Adjustable spring tension with nylon roller
  - Projection of roller is easily adjusted using screws on faceplate
  - Max projection of the roller is 3/8" (9.5 mm) allowing for variance in door and frame clearance



### 320R

#### Roller Catch with Tee Strike

- Certification: Meets ANSI A156.16 for E0910
- Roller Faceplate: 1-1/8" x 2-1/4" (29 mm x 57 mm)
- Strike: 1-1/4" x 2-3/4" x 1/16" thick (32 mm x 70 mm x 1.5 mm)
- Materials: Brass
- Finishes: US3, US10, US10B, US15, US26, US26D
- Fasteners: Four (4) #8 x 1" FPHWS
- Notes:
  - Adjustable spring tension with nylon roller
  - Projection of roller is adjusted by turning knurled knob on back of the latch
  - Max projection of the roller is 7/16" (11 mm) allowing for variance in door and frame clearance
  - For use with wood door and frame



### 321R

#### Adjustable Ball Catch with Strike

- Roller Faceplate: 1" x 2-1/8" (25 mm x 54 mm)
- Strike: 1-1/2" x 2-1/8" (38 mm x 54 mm)
- Strike Gauge: 0.050" (1.3 mm)
- Materials: Brass with steel ball
- Finishes: US3, US4, US10, US10B, US15, US15A, US19, US26D
- Fasteners: Four (4) #6 FPHWS
- Notes:
  - Adjustable threaded barrel compensates for various door clearances
  - Adjustable spring tension
  - For use with wood door and frame



### 323S

#### Three-Way Ball Catch

- Certification: Meets ANSI/BHMA 156.9.B13302
- Body: 1/2" W x 2-3/16" H x 1/2" D
- Strike:
  - 3/8" W x 1-3/8" H x 5/8" D
  - Plate type strike
- Materials: Brass with steel balls
- Finish: US26D
- Notes:
  - Adjustable spring tension is easily adjusted to suit field conditions
  - Body can be surface applied or mortised





## LATCHES & PROTECTION PLATES



### 340C

#### Latch Protection Plate

- Size: 3" x 11" (76 mm x 279 mm)  
 Materials: 12 gauge steel, stainless steel  
 Finishes: US32D  
 Fasteners: Two (2) 5/16-20 x 1-1/2" carriage bolts with sex nuts  
 Notes:
  - For use with 1-3/4" (45 mm) doors
  - Non-handed
  - For use with most mortise locks
  - For use with cylindrical locksets with a 3-3/4" (95 mm) backset or greater



### 340D

#### Latch Protection Plate

- Size: 3" x 11" (76 mm x 279 mm)  
 Materials: 12 gauge steel, stainless steel  
 Finishes: US2C, US32D  
 Fasteners: Two (2) 5/16-20 x 1-1/2" carriage bolts with sex nuts  
 Notes:
  - For use with 1-3/4" (45 mm) doors
  - Non-handed
  - Frame pin prevents prying of door
  - For use with most mortise locks
  - For use with cylindrical locksets with a 3-3/4" (95 mm) backset or greater



### 341C

#### Latch Protection Plate with Lock Cut Out (no frame pins)

- Size: 3" x 11" (76 mm x 279 mm)  
 Materials: 12 gauge steel, stainless steel  
 Finishes: US32D  
 Fasteners: Two (2) 5/16-20 x 1-1/2" carriage bolts with sex nuts  
 Notes:
  - For use with 1-3/4" (45 mm) doors
  - Non-handed
  - For use with cylindrical locksets with a 2-3/4" (70 mm) backset



### 341D

#### Latch Protection Plate with Lock Cut Out

- Size: 3" x 11" (76 mm x 279 mm)  
 Materials: 12 gauge steel, stainless steel  
 Finishes: US2C, US32D  
 Fasteners: Two (2) 5/16-20 x 1-1/2" carriage bolts with sex nuts  
 Notes:
  - For use with 1-3/4" (45 mm) doors
  - Non-handed
  - Frame pin prevents prying of door
  - For use with cylindrical locksets with a 2-3/4" (70 mm) backset



### 342D

#### Latch Protection Plate with Escutcheon Cut Out

- Size: 3" x 11" (76 mm x 279 mm)  
 Materials: 12 gauge steel, stainless steel  
 Finishes: US2C, US32D  
 Fasteners: Two (2) 5/16-20 x 1-1/2" carriage bolts with sex nuts  
 Notes:
  - For use with 1-3/4" (45 mm) doors
  - Non-handed
  - For use with cylindrical and mortise locks with a 2-3/4" (70 mm) backset

## LATCHES & PROTECTION PLATES



### 345D

#### Latch Protection Plate

- Size: 1-5/8" x 10" (41 mm x 254 mm)  
Materials: 12 gauge steel, stainless steel  
Finishes: US2C, US32D  
Fasteners: Two (2) 5/16-20 x 1-1/2" carriage bolts with sex nuts  
Notes:
- For use with 1-3/4" (45 mm) doors
  - Non-handed
  - For use with cylindrical and mortise locks with standard (not extended lip) strikes



### 1442

#### Roller Latch with Full Lip Strike

- Certification: Meets ANSI A156.16 for E09091  
Roller Faceplate: 1" x 3-3/8" (25 mm x 86 mm)  
Strike: 1-11/16" x 2-1/4" (43 mm x 57 mm)  
Strike Gauge: 5/32" (4 mm)  
Materials: Brass  
Finishes: US3, US4, US10, US10B, US15, US15A, US19, US26, US26D  
Fasteners: Two (2) #10 x 1-1/2" FPHWS, two (2) #8 x 1" FPHWS, and two (2) 8-32 x 3/4" FPHMS  
Options: Non-ferrous available with extended lead time and 500 piece MOQ  
Notes:
- Adjustable spring tension with nylon roller
  - Projection of roller is easily adjusted using screws on faceplate
  - Max projection of the roller is 3/8" (9.5 mm) allowing for variance in door and frame clearance
  - For use with 1-3/8" doors only



### 1443

#### Roller Latch with ASA Strike

- Certification: Meets ANSI A156.16 for E09101  
Roller Faceplate: 1" x 3-3/8" (25 mm x 86 mm)  
Strike: 1-1/4" x 4-7/8" (32 mm x 124 mm)  
Strike Gauge: 0.090" (2.3 mm)  
Materials: Brass  
Finishes: US3, US4, US10B, US15, US15A, US19, US26, US26D  
Fasteners: Two (2) #10 x 1-1/2" FPHWS, two (2) #12 x 3/4" FPHWS, and two (2) 12-24 x 1/2" FPHMS  
Notes:
- Adjustable spring tension with nylon roller
  - Projection of roller is easily adjusted using screws on faceplate
  - Max projection of the roller is 3/8" (9.5 mm) allowing for variance in door and frame clearance





## COAT HOOKS



**901P**  
**Coat Hook - Short Single**  
 Diameter: 1" (25 mm)  
 Projection: 1-1/4" (32 mm)  
 Materials: Brass  
 Finishes: US3, US26D  
 Fasteners: #14 x 1-1/4" wood thread  
 Notes: Concealed mounting



**937P**  
**Coat Hook**  
 Projections:
 

- 3-3/4" (95 mm) top hook
- 2-1/2" (63 mm) bottom hook

 Materials: Brass  
 Finishes: US3, US26D



**902P**  
**Coat Hook - Long Single**  
 Diameter: 1" (25 mm)  
 Projection: 2-1/2" (63 mm)  
 Materials: Brass  
 Finishes: US3, US26D  
 Fasteners: #14 x 1-1/4" wood thread  
 Notes: Concealed mounting



**940P**  
**Coat Hook - Double**  
 Overall Height: 4-11/16" (119 mm)  
 Top Projection: 3-15/16" (100 mm)  
 Bottom Projection: 2-1/8" (54 mm)  
 Material Thickness: 1/4" (6 mm)  
 Materials: Brass  
 Finishes: US3, US26D  
 Fasteners: Two (2) #10 x 1" FPHWS



**903P**  
**Coat Hook - Long Double**  
 Diameter: 1" (25 mm)  
 Projection: 2-1/2" (63 mm)  
 Materials: Brass  
 Finishes: US3, US26D  
 Fasteners: #14 x 1-1/4" wood thread  
 Notes: Concealed mounting



**941P**  
**Coat Hook - Single**  
 Overall Height: 2-5/16" (59 mm)  
 Projection: 2-1/8" (54 mm)  
 Material Thickness: 1/4" (6 mm)  
 Materials: Brass  
 Finishes: US3, US26D  
 Fasteners: Two (2) #10 x 1" FPHWS



**936P**  
**Coat Hook Single Angled**  
 Base Diameter: 1-15/16" (49 mm)  
 Hook Diameter: 11/16" (17 mm)  
 Projection: 3-5/16" (84 mm)  
 Materials: Brass  
 Finishes: US3, US26D  
 Notes: Concealed mounting



## COAT HOOKS



**945P**  
**Double Coat Hook - Surface Mounting**  
 Overall Height: 5-1/2" (140 mm)  
 Projection: 3-5/16" (84 mm)  
 Materials: Brass  
 Finishes: US3, US26D  
 Fasteners: Four (4) #10 x 1" FPHWS w/ anchors



**952P**  
**Coat Hook - Single**  
 O/A Height: 1-15/16" (49 mm)  
 Projection: 2-1/4" (57 mm)  
 Materials: Brass  
 Finishes: US3, US26D  
 Notes: Concealed mounting



**946P**  
**Double Coat Hook - Concealed Mounting**  
 Overall Height: 5-1/2" (140 mm)  
 Projection: 3-11/16" (94 mm)  
 Materials: Brass  
 Finishes: US3, US26D  
 Fasteners: Two (2) #10 x 1" FPHWS w/ anchors  
 Notes: Concealed mounting



**956P**  
**Double Coat Hook - Angled**  
 Overall Height: 5-11/16" (144 mm)  
 Projection: 3-23/32" (95 mm)  
 Materials: Brass  
 Finishes: US3, US26D  
 Notes: Concealed mounting



**951P**  
**Coat Hook - Double**  
 O/A Height: 5-3/4" (146 mm)  
 Projection: 2-3/4" (70 mm)  
 Materials: Brass  
 Finishes: US3, US26D  
 Notes: Concealed mounting



**957P**  
**Coat Hook**  
 Projection: 1-3/4" (45 mm)  
 Base Diameter: 3/4" (19 mm)  
 Materials: Brass  
 Finishes: US3, US26D  
 Fasteners: One (1) #10 x 1" wood thread  
 Notes: Concealed mounting



## PULLS - CLOSET/ POCKET/ SLIDING DOOR



### 22N

#### Concealed Edge Pull

Certification: Meets ANSI A156.14 for D2801  
 Size: 31/32" x 4-1/4" x 3/8" thick (25 mm x 108 mm x 9.5 mm)  
 Lever Extension: 2-19/32" (66 mm)  
 Materials: Brass  
 Finishes: US3, US26D  
 Fasteners: Two (2) #6 x 3/4" FPHWS



### 330D

#### Pocket Door Latch

Certification: Meets ANSI A156.14 for D0821  
 Size: 2-3/4" x 2-1/2" (70 mm x 64 mm)  
 Extension of Finger Piece: 1-3/8" (35 mm)  
 Materials: Brass  
 Finishes: US3, US5, US10B, US15A, US19, US26, US26D  
 Fasteners: Two (2) #6 x 5/8" OPHWS  
 Notes: For use with 1-3/8" - 1-3/4" (35 mm - 45 mm) door



### 330L

#### Pocket Door Privacy Latch

Certification: Meets ANSI A156.14 for D0831  
 Size: 2-3/4" x 2-1/2" (70 mm x 64 mm)  
 Extension of Finger Piece: 1-3/8" (35 mm)  
 Strike Size: 1" x 2-1/4" (25 mm x 57 mm)  
 Materials: Brass  
 Finishes: US3, US5, US10B, US15, US15A, US19, US26, US26D  
 Fasteners: Two (2) #6 x 5/8" OPHWS and two (2) #6 x 3/4" FPHWS  
 Notes: For use with 1-3/8" (35 mm) door



### 330M

#### Pocket Door Privacy Latch

Certification: Meets ANSI A156.14 for D0831  
 Size: 2-3/4" x 2-1/2" (70 mm x 64 mm)  
 Extension of Finger Piece: 1-3/8" (35 mm)  
 Strike Size: 1" x 2-1/4" (25 mm x 57 mm)  
 Materials: Brass  
 Finishes: US3, US5, US10B, US15, US15A, US19, US26, US26D  
 Fasteners: Two (2) #6 x 5/8" OPHWS and two (2) #6 x 3/4" FPHWS  
 Notes: For use with 1-3/4" (45 mm) door



### 2610

#### Flush Cup Finger Pull

Overall Diameter: 31/32" (24.5 mm)  
 Finger Pull Diameter: 3/4" (19 mm)  
 Pull Clearance: 5/16" (8 mm)  
 Projection: 1/32" (.8 mm)  
 Materials: Solid brass  
 Finishes: US3, US4, US5, US10A, US15, US15A, US26, US26D, ABA  
 Notes:
 

- For use on bi-fold, by-pass or pocket applications
- Built-in prong design eliminates the need for screws or brads



## PULLS - CLOSET/POCKET/SLIDING DOOR



### 2620

#### Flush Cup Pull

Overall Diameter: 2-1/16" (52 mm)  
 Finger Pull Diameter: 1-11/16" (43 mm)  
 Pull Clearance: 11/32" (8.7 mm)  
 Projection: 5/64" (2 mm)  
 Materials: Solid brass  
 Finishes: US3, US4, US5, US10A, US15, US15A, US26, US26D, ABA  
 Notes:
 

- For use on bi-fold, by-pass or pocket applications
- Built-in prong design eliminates the need for screws or brads



### 2630

#### Flush Cup Pull

Overall Diameter: 2-7/16" (62 mm)  
 Finger Pull Diameter: 2-1/16" (52 mm)  
 Pull Clearance: 11/32" (8.7 mm)  
 Projection: 3/32" (2.4 mm)  
 Materials: Solid brass  
 Finishes: US3, US4, US5, US10A, US15, US15A, US26, US26D, ABA  
 Notes:
 

- For use on bi-fold, by-pass or pocket applications
- Built-in prong design eliminates the need for screws or brads



### 2640

#### Oblong Flush Pull

Size: 1-5/16" x 2-3/4" (33 mm x 70 mm)  
 Cup Clearance: 5/16" (8 mm)  
 Materials: Solid brass  
 Finishes: US3, US4, US5, US10A, US15, US15A, US26, US26D, ABA  
 Fasteners: Two (2) #6 x 5/8" OPHWS  
 Notes: For use on bi-fold, by-pass or pocket applications



### 9558

#### Wood Knob

Diameter: 1-1/2" (38 mm)  
 Materials: Solid wood  
 Notes:
 

- For use on bi-fold applications
- Will accept paint or stain



### 9566

#### Knob

Diameter: 1-1/4" (32 mm)  
 Projection: 1" (25 mm)  
 Materials: Die Cast Zinc  
 Finishes: US3, US4, US5, US10A, US10B, US15, US15A, US26, US26D  
 Fasteners: One (1) 8-32 x 1-3/4" PPHMS and one (1) 8-32 x 2" PPHMS  
 Notes: For use on bi-fold applications on doors 3/4" (19 mm) to 1-3/8" (35 mm) thick





## PULLS - CLOSET/POCKET/SLIDING DOOR



### 9567

#### Rose

- Base Diameter: 1-3/4" (45 mm)  
 Projection: 15/32" (12 mm)  
 Materials: Die cast zinc  
 Finishes: US3, US4, US5, US10A, US10B, US15, US15A, US26, US26D  
 Fasteners: One (1) 8-32 x 1-3/4" PPHMS and one (1) 8-32 x 2" PPHMS  
 Notes:
  - For use on bi-fold applications on doors 3/4" (19 mm) to 1-3/8" (35 mm) thick
  - For use with 9566 knob



### 9865

#### Flush Cup Pull

- Overall Diameter: 1-31/32" (50 mm)  
 Finger Pull Diameter: 1-19/32" (40 mm)  
 Pull Clearance: 11/32" (8.7 mm)  
 Projection: 5/64" (2 mm)  
 Materials: Tan color ABS plastic  
 Notes:
  - For use on bi-fold, by-pass or pocket applications
  - Built-in prong design eliminates the need for screws or brads



### 9882

#### Pocket Door Edge Pull

- Face Plate Size: 3/4" x 3 - 7/8" (19 mm x 98 mm)  
 Finger Pull Extends: 3/4" (19 mm)  
 Materials: Solid brass  
 Finishes: US3, US10B, US26, US26D  
 Fasteners: Two (2) #6 x 5/8" FPHWS  
 Notes:
  - Ideal for narrow and standard door thicknesses
  - Automatic spring return



### 9884

#### Pocket Door Edge Pull

- Faceplate: 21/32" x 3-1/2" (16.5 mm x 89 mm)  
 Finger Pull Extends: 1-1/16" (27 mm)  
 Materials: Die cast zinc  
 Finishes: US3  
 Fasteners: Two (2) #6 x 5/8" FPHWS  
 Notes: Ideal for narrow and standard door thicknesses

## FILLER PLATES



**336A**  
**Door Edge Filler Plate - 161 Prep**  
 Size: 1-1/8" x 2-1/4"  
 (29 mm x 57 mm)  
 Thickness: 0.134" (3.4 mm)  
 Materials: Primed steel



**336G**  
**Door Edge Filler Plate - Square**  
 Size: 1-3/4" x 5"  
 (38 mm x 127 mm)  
 Thickness: 0.134" (3.4 mm)  
 Materials: Primed steel



**336B**  
**Door Edge Filler Plate - 86 Prep**  
 Size: 1-1/4" x 8"  
 (32 mm x 203 mm)  
 Thickness: 0.2" (5.1 mm)  
 Materials: Primed steel



**336H**  
**Door Edge Filler Plate - Beveled**  
 Size: 1-1/2" x 5"  
 (38 mm x 127 mm)  
 Thickness: 0.134" (3.4 mm)  
 Materials: Primed steel  
 Notes: For handed doors



**336C**  
**Door Face Filler Plate**  
 Size: 1-3/4" (45 mm)  
 diameter  
 Thickness: 0.055" (1.4 mm)  
 Materials: Primed steel



**336J**  
**Flush Bolt Strike Filler Plate - Frame**  
 Size: 15/16" x 2-1/4"  
 (24 mm x 57 mm)  
 Thickness: 0.083" (2.1 mm)  
 Materials: Primed steel



**336D**  
**Door Face Filler Plate**  
 Size: 2-5/8" (67 mm)  
 diameter  
 Thickness: 0.055" (1.4 mm)  
 Materials: Primed steel



**336K**  
**Flush Bolt Filler Plate - Door**  
 Size: 1" x 6-3/4"  
 (25 mm x 172 mm)  
 Thickness: 0.093" (2.9 mm)  
 Materials: Primed steel



**336E**  
**Door Edge Filler Plate - Square**  
 Size: 1-3/4" x 4-1/2"  
 (45 mm x 114 mm)  
 Thickness: 0.134" (3.4 mm)  
 Materials: Primed steel



**336L**  
**Hinge Filler Plate - Frame**  
 Size: 1-5/8" x 4-1/2"  
 (41 mm x 114 mm)  
 Thickness: 0.134" (3.4 mm)  
 Materials: Primed steel



**336F**  
**Door Edge Filler Plate - Bevel**  
 Size: 1-1/2" x 4-1/2"  
 (38 mm x 114 mm)  
 Thickness: 0.134" (3.4 mm)  
 Materials: Primed steel  
 Notes: For handed doors



## FILLER PLATES



**336M**  
**Hinge Filler Plate - Frame**  
 Size: 1-5/8" x 5"  
 (41 mm x 127 mm)  
 Thickness: 0.134" (3.4 mm)  
 Materials: Primed steel



**337A**  
**Template Hinge Shim**  
 Size: 1-7/16" x 4-1/2"  
 (37 mm x 114 mm)  
 Thickness: 0.028" (0.7 mm)  
 Materials: Primed steel



**336N**  
**Latch Adapter Filler Plate - 86 to 161**  
**Edge Prep**  
 Size: 1-1/4" x 8"  
 (32 mm x 203 mm)  
 Thickness: 0.230" (5.8 mm)  
 Materials: Primed steel



**337B**  
**Template Hinge Shim**  
 Size: 1-7/16" x 4-1/2"  
 (37 mm x 114 mm)  
 Thickness: 0.065" (1.7 mm)  
 Materials: Primed steel



**336P**  
**Deadlock Strike Filler Plate - Frame**  
 Size: 1-1/8" x 2-3/4"  
 (29 mm x 70 mm)  
 Thickness: 0.093" (2.4 mm)  
 Materials: Primed steel



**337C**  
**Template Hinge Shim**  
 Size: 1-7/16" x 5"  
 (37 mm x 127 mm)  
 Thickness: 0.028" (0.7 mm)  
 Materials: Primed steel



**336Q**  
**ASA Strike Filler Plate - Frame**  
 Size: 1-1/4" x 4-7/8"  
 (32 mm x 124 mm)  
 Thickness: 0.093" (2.4 mm)  
 Materials: Primed steel



**337D**  
**Template Hinge Shim**  
 Size: 1-7/16" x 5"  
 (37 mm x 127 mm)  
 Thickness: 0.065" (1.7 mm)  
 Materials: Primed steel



**336R**  
**Cylindrical Lock Strike Filler Plate -**  
**Frame**  
 Size: 1-1/8" x 2-3/4"  
 (29 mm x 70 mm)  
 Thickness: 0.083" (2.1 mm)  
 Materials: Primed steel



## SIGNAGE

**PUSH**

**PULL**

### 350H | 350L

#### Engraved Plastic Sign - Push (350H) and Pull (350L)

- Certification: Meets ANSI A156.16 L03201  
 Materials: 0.125" (3.2 mm) thick plastic  
 Lettering: 3/4" (19 mm) Helvetica  
 Size: 2" x 4" (51 mm x 102 mm)  
 Fasteners: Double-sided pressure sensitive tape or screws (specify)  
 Colors:
  - Brown (W1) with white lettering
  - Black (W2) with white lettering
  - Blue (W3) with white lettering
  - Silver (B1) with black lettering
  - Gold (B2) with black lettering
 Notes: Signs are individually packed in a poly bag

**MEN**

**WOMEN**

### 350M | 350W

#### Engraved Plastic Sign - Men (350M) and Women (350W)

- Certification: Meets ANSI A156.16 L03201  
 Materials: 0.125" (3.2 mm) thick plastic  
 Lettering: 3/4" (19 mm) Helvetica  
 Size: 2" x 5" (51 mm x 127 mm)  
 Fasteners: Double-sided pressure sensitive tape or screws (specify)  
 Colors:
  - Brown (W1) with white lettering
  - Black (W2) with white lettering
  - Blue (W3) with white lettering
  - Silver (B1) with black lettering
  - Gold (B2) with black lettering
 Notes: Signs are individually packed in a poly bag

**635**

### 350R

#### Engraved Plastic Sign - Number

- Certification: Meets ANSI A156.16 L03201  
 Materials: 0.125" (3.2 mm) thick plastic  
 Lettering: 3/4" (19 mm) Helvetica  
 Size: 2" x 4" (51 mm x 102 mm)  
 Fasteners: Double-sided pressure sensitive tape or screws (specify)  
 Colors:
  - Brown (W1) with white lettering
  - Black (W2) with white lettering
  - Blue (W3) with white lettering
  - Silver (B1) with black lettering
 Notes:
  - Signs are individually packed in a poly bag
  - Please note numbers to be engraved when ordering

**PUSH**

**PULL**

### 351H | 351L

#### Engraved Plastic Sign - Push (351H) and Pull (351L)

- Certification: Meets ANSI A156.16 L03201  
 Materials: 0.125" (3.2 mm) thick plastic  
 Lettering: 3/4" (19 mm) Helvetica  
 Size: 1" x 4-1/2" (25 mm x 114 mm)  
 Fasteners: Double-sided pressure sensitive tape or screws (specify)  
 Colors:
  - Brown (W1) with white lettering
  - Black (W2) with white lettering
  - Blue (W3) with white lettering
  - Silver (B1) with black lettering
  - Gold (B2) with black lettering
 Notes: Signs are individually packed in a poly bag





## SIGNAGE

 MEN

### 352M | 352W

#### Engraved Plastic Sign - Men (352M) and Women (352W)

Certification:	Meets ANSI A156.16 L03201
Materials:	0.125" (3.2 mm) thick plastic
Lettering:	3/4" (19 mm) Helvetica
Size:	352M - 2-1/2" x 6" (64 mm x 152 mm) 352W - 2-1/2" x 7" (64 mm x 178 mm)
Fasteners:	Double-sided pressure sensitive tape or screws (specify)
Colors:	<ul style="list-style-type: none"><li>• Brown (W1) with white lettering</li><li>• Black (W2) with white lettering</li><li>• Blue (W3) with white lettering</li><li>• Silver (B1) with black lettering</li><li>• Gold (B2) with black lettering</li></ul>
Notes:	Signs are individually packed in a poly bag

 WOMEN

### 354A | 354B

#### Engraved Plastic Sign - Restroom(s)

Certification:	Meets ANSI A156.16 L03201
Materials:	0.125" (3.2 mm) thick plastic
Lettering:	3/4" (19 mm) Helvetica
Size:	2" x 6" (51 mm x 127 mm)
Fasteners:	Double-sided pressure sensitive tape or screws (specify)
Colors:	<ul style="list-style-type: none"><li>• Black (W2) with white lettering</li><li>• Blue (W3) with white lettering</li></ul>
Notes:	Signs are individually packed in a poly bag

Restroom

Restrooms



**SIGNAGE**



**364M | 364S**

**Plastic International Handicap Symbol**

Certification: Meets ANSI A156.16 L03201  
 Materials: 0.0625" (1.6 mm) thick plastic raised HANDICAP symbol  
 Size: 364M - 4" x 4" (102 mm x 102 mm)  
 364S - 3" x 3" (76 mm x 76 mm)  
 Fasteners: Double-sided pressure sensitive tape standard or screws (specify)  
 Colors: Blue (W3) with raised white symbol  
 Notes: Signs are individually packed in a poly bag



**364N**

**Engraved International No Smoking Symbol**

Certification: Meets ANSI A156.16 L03201  
 Materials: 0.125" (3.2 mm) thick plastic  
 Size: 6" x 6" (152 mm x 152 mm)  
 Fasteners: Pressure sensitive tape standard or screws (specify)  
 Colors: Red (W4) with raised white symbol  
 Notes: Signs are individually packed in a poly bag



**364L**

**Plastic International Handicap Symbol**

Certification: Meets ANSI A156.16 L03201  
 Materials: 0.125" (3.2 mm) thick plastic 1/32" (0.8 mm) raised HANDICAP symbol  
 Size: 6" x 6" (152 mm x 152 mm)  
 Fasteners: Double-sided pressure sensitive tape standard or screws (specify)  
 Colors:
 

- Brown (W4) with raised white symbol
- Black (W2) with raised white symbol
- Blue (W3) with raised white symbol

 Notes: Signs are individually packed in a poly bag



**365M | 365W**

**ADA Tactile Signage - Men (365M) and Women (365W)**

Certification: Meets ANSI A156.16 L03201  
 Materials: 0.125" (3.2 mm) thick plastic  
 Size: 6" x 8" (152 mm x 203 mm)  
 Fasteners: Double-sided pressure sensitive tape  
 Colors:
 

- Brown (W1) with raised white symbol
- Black (W2) with raised white symbol
- Blue (W3) with raised white symbol

 Notes:
 

- Signs are individually packed in a poly bag
- Grade 2 Braille Translation conforming to section 4.30 requirements





## SIGNAGE

325

### 366R

#### ADA Tactile Signage - Room Number

- Certification: Meets ANSI A156.16 L03201  
 Materials: 0.125" (3.2 mm) thick plastic  
 Size: 2-1/2" x 5" (64 mm x 127 mm)  
 Fasteners: Double-sided pressure sensitive tape  
 Colors:
  - Brown (W1) with raised white lettering
  - Black (W2) with raised white lettering
  - Blue (W3) with raised white lettering
 Notes:
  - Signs are individually packed in a poly bag
  - Grade 2 Braille Translation conforming to section 4.30 requirements
  - Please note numbers to be engraved when ordering



### 366S

#### ADA Tactile Signage - Stairs

- Certification: Meets ANSI A156.16 L03201  
 Materials: 0.125" (3.2 mm) thick plastic  
 Size: 6" x 8" (152 mm x 203 mm)  
 Fasteners: Double-sided pressure sensitive tape  
 Colors:
  - Brown (W1) with white symbol and lettering
  - Black (W2) with white symbol and lettering
  - Blue (W3) with white symbol and lettering
 Notes:
  - Signs are individually packed in a poly bag
  - Grade 2 Braille Translation conforming to section 4.30 requirements



### 368E

#### ADA Tactile Signage - Exit

- Certification: Meets ANSI A156.16 L03201  
 Materials: 0.125" (3.2 mm) thick plastic  
 Size: 6" x 8" (152 mm x 203 mm)  
 Fasteners: Double-sided pressure sensitive tape  
 Colors:
  - Brown (W1) with white symbol and lettering
  - Black (W2) with white symbol and lettering
  - Blue (W3) with white symbol and lettering
 Notes:
  - Signs are individually packed in a poly bag
  - Grade 2 Braille Translation conforming to section 4.30 requirements



### 368M | 368W

#### ADA Tactile Signage - Men (365M) and Women (365W) with Handicap

- Certification: Meets ANSI A156.16 L03201  
 Materials: 0.125" (3.2 mm) thick plastic  
 Size: 6" x 8" (152 mm x 203 mm)  
 Fasteners: Double-sided pressure sensitive tape  
 Colors:
  - Brown (W1) with white symbol and lettering
  - Black (W2) with white symbol and lettering
  - Blue (W3) with white symbol and lettering
 Notes:
  - Signs are individually packed in a poly bag
  - Grade 2 Braille Translation conforming to section 4.30 requirements







**SIGNAGE**



**368U**

**ADA Tactile Signage - Unisex**

- Certification: Meets ANSI A156.16 L03201
- Materials: 0.125" (3.2 mm) thick plastic
- Size: 8" x 8" (203 mm x 203 mm)
- Fasteners: Double-sided pressure sensitive tape
- Colors:
  - Brown (W1) with white symbol and lettering
  - Black (W2) with white symbol and lettering
  - Blue (W3) with white symbol and lettering
- Notes:
  - Signs are individually packed in a poly bag
  - Grade 2 Braille Translation conforming to section 4.30 requirements



**369L | 369R**

**ADA Tactile Signage - Access Left (369L) and Access Right (369R)**

- Certification: Meets ANSI A156.16 L03201
- Materials: 0.125" (3.2 mm) thick plastic
- Size: 6" x 8" (152 mm x 203 mm)
- Fasteners: Double-sided pressure sensitive tape
- Colors:
  - Brown (W1) with white symbol and lettering
  - Black (W2) with white symbol and lettering
  - Blue (W3) with white symbol and lettering
- Notes:
  - Signs are individually packed in a poly bag
  - Grade 2 Braille Translation conforming to section 4.30 requirements



**370U | 370W | 370M**

**ADA Tactile Signage - Restroom, Men, and Women**

- Certification: Meets ANSI A156.16 L03201
- Materials: 9/16" (14.3 mm) plastic
- Size:
  - 370U - 12" (305 mm) diameter
  - 370W - 12" (305 mm) diameter
  - 370M - 10-1/2" (267 mm) side
- Fasteners: Double-sided pressure sensitive tape
- Color: Blue (W3) with white raised symbol and lettering
- Notes:
  - Signs are individually packed in a poly bag
  - Grade 2 Braille Translation conforming to section 4.30 requirements





## MISCELLANEOUS



### 274B

#### Door Guard Protection Plate

- Size: 1-1/8" x 1" x 1/2" (28.5 mm x 25 mm x 12.5 mm)  
 Materials: Brass  
 Finishes: US3, US4, US10, US10B, US15, US26, US26D  
 Notes:
  - Used when additional protective plate is required for frame application
  - Mounted with double-sided tape
  - To be used with the 274D



### 274C

#### Shim for Door Guard

- Size:
  - 1-1/16" X 1-5/8" (27 mm X 41 mm)
  - 1-1/8" x 1-1/16" (29 mm x 27 mm)
 Thickness: 3/32" (2.3 mm)  
 Materials: Black rubber  
 Notes: To be used with the 274D



### 274D

#### Door Guard

- Certification: Meets ANSI A156.16 for L13041  
 Arm Length: 4-1/2" (114 mm)  
 Materials: Brass  
 Finishes: US3, US4, US10, US10B, US15, US26, US26D  
 Fasteners: Three (3) #6 x 1-1/2" OPHWS, four (4) #6 x 3/4" OPHWS, and seven (7) 6-32 x 12" OPHMS  
 Notes:
  - Permits door to be slightly opened to allow viewing
  - Hinged bar allows the door guard to be positioned 180 degrees away from the door when not in use
  - Includes door guard protective plate 274B



### 277D

#### Door Guard

- Certification:
  - Meets NFPA 80 5.2.13.3
  - Meets NFPA 80 5.2.4.2(9)
  - ADA Compliant Arm
 Size:
  - Base: 2-5/8" H x 1-9/16" W
  - Projection: 2-3/16"
 Materials: Cast zinc  
 Finishes: US3, US4, US10B, US15, US19, US26, US26D  
 Fasteners:
  - Three (3) #12 x 1- 3/4" FPHSMS
  - Three (3) 12-24 machine screws
 Note: Release tool 277R sold separately



### 277F

#### Privacy Door Guard Bracket

- Materials:
  - Cold rolled steel
 Finish:
  - Primer gray
 Fasteners:
  - Five (5) 12-24 FPH Self-tapping. (Balance of three (3) fasteners supplied with the 277D)
 Notes:
  - For use with the decorative snap-on frames using Hager 277D Privacy Door Guard



## MISCELLANEOUS



### **300D** **Chain Door Check**

- Certification: Meets ANSI A156.16 for L02231
- Lengths:
- 25-1/2" (648 mm) recommended for use with 36" (914 mm) wide door
  - 30-1/2" (775 mm) recommended for use with 42" (1067 mm) wide door
- Base Plate: 1-1/2" x 1-1/2" (38 mm x 38 mm)
- Materials:
- Cast zinc base
  - Galvanized steel chain
  - EDPM rubber cover
- Finish: US26D
- Fasteners: Ten (10) #8 x 1" FPHSMS
- Notes:
- Tear resistant grey vinyl cover
  - Can be ordered through door mounting with grommet nut sets at extra charge
  - 440 pound load strength
  - Designed for full size exterior doors



**MISCELLANEOUS**



**301D  
Residential Stop**

Certification: Meets ANSI A156.16 for L02223  
 Materials: Wrought steel with rubber bumpers  
 Finishes: 26D, US3  
 Notes:
 

- Works with 1/4" (6 mm) and 5/16" ( 8 mm) hinge pins
- For use where standard door stops are not desirable
- Positive slip proof design
- Adjustable from 70 degrees to 100 degrees
- Must purchase an NRP hinge for use with this pinstop



**303W  
Handrail Bracket**

Certification: Meets ANSI A156.16 for L03061  
 Base Diameter: 3-5/32" (80 mm)  
 Base to Center of Rail: 2-3/4" (70 mm)  
 Materials: Brass  
 Finishes: US26D  
 Fasteners: Three (3) #10 x 1-1/4" FPHWS, three (3) plastic anchors, three (3) 10-24 x 13/16" FPHMS, and three (3) 10-24 lead anchors



**305D  
Wire Pull**

Certification: Meets ANSI A156.9 for B02011  
 Diameter of Rod: 5/16" (7.9 mm)  
 Projection: 1-9/32" (32.5 mm)  
 CTC Lengths: 3" (76 mm), 3-1/2" (89 mm), 4" (102 mm)  
 Materials: Brass  
 Finishes: US3, US4, US10, US26, US26D  
 Fasteners: Two (2) 8-32 x 1" TPHMS



**307D  
Door Silencer**

Certification: Meets ANSI A156.16 for L03011  
 Diameter: 1/2" (13 mm)  
 Projection: 1/8" (3 mm)  
 Materials: Rubber  
 Notes:
 

- For use with metal frames
- Proper installation eliminates door rattle and provides constant tension for door latches or locks



**308D  
Door Silencer**

Certification: Meets ANSI A156.16 for L0302  
 Projection: 9/64" (3.5 mm)  
 Base: 3/8" x 3/4" (9.5 mm x 19 mm)  
 Length: 3/4" (19 mm)  
 Materials: Rubber  
 Notes:
 

- For use with wood frames
- Eliminates door rattle when door is latched
- Proper installation eliminates door rattle and provides constant tension for door latches or locks





## MISCELLANEOUS



### 310C Conversion Kit

- Filler Plate: 1-1-8" x 3-3/8" (29 mm x 86 mm)  
 Strike: 1-11/16" x 2-1/4" (43 mm x 57 mm)  
 Materials: Brass  
 Finishes: US10B, US26D  
 Notes:
  - Packed with filler plate, strike and fasteners
  - Change door from Roller Latch to Push/Pull Latch
  - Viewer is UL Listed



### 322V Wrought Door Knocker with Viewer (115°)

- Certification: Meets ANSI A156.16 for L03163  
 Size: 2-3/16" x 3-1/4" (56 mm x 83 mm)  
 Materials: Brass  
 Finishes: US26D  
 Fasteners: Three (3) #6 x 3/4" TPHSMS  
 Engraving: Available up to four characters  
 Notes:
  - Requires 1/2" (13 mm) hole for viewer
  - Viewer is UL Listed



### 334V Door Knocker with Viewer (115°)

- Certification: Meets ANSI A156.16 for L03163  
 Size: 3-9/16" x 6-3/4" (90.5 mm x 171.5 mm)  
 Materials: Solid Cast Brass  
 Finishes: US3, US4, US10, US10B, US26, US26D  
 Fasteners:
  - Two (2) #8 finish washers
  - Two (2) 7-32 x 1-7/8" OHMS for 1-5/8" doors
  - Two (2) 7-32 x 2" OHMS for 1-3/4" doors
 Available up to four characters  
 Engraving: Available up to four characters  
 Notes: Requires 1/2" (13mm) hole for viewer  
 Viewer is UL Listed



### 1755 115° Door Viewer

- Certification: Meets ANSI A156.16 for L03223  
 Materials: Finishes: Brass  
 Door Thickness: US3, US4, US5, US10A, US15, US15A, US26, US26D  
 Notes:
  - 1-3/8" - 2-1/8" thick, adjustable
  - For doors up to 2-1/8" (54 mm) thick, adjustable
  - Requires 1/2" (13 mm) hole for viewer
  - Tamper resistant
  - 90 minute fire-rated
  - One-way viewer



## MISCELLANEOUS



### 1756

#### 185° Door Viewer

- Certification: Meets ANSI A156.16 for L03223  
 Materials: Brass  
 Finishes: US3, US4, US5, US10A, US15, US15A, US19, US26, US26D  
 Notes:
  - For doors up to 2-1/8" (54 mm) thick, adjustable
  - Requires 9/16" (14 mm) hole for viewer
  - Tamper resistant
  - 90 minute fire-rated
  - One-way viewer



### 1758

#### 115° Door Viewer with Privacy Flap

- Certification: Meets ANSI A156.16 for L03223  
 Materials: Brass  
 Finishes: US3, US10A, US26, US26D  
 Notes:
  - Requires 1/2" (13 mm) hole for viewer
  - For doors 1-3/8" (35 mm) to 2-1/8" (54 mm) thick, adjustable
  - Tamper resistant
  - 90 minute fire-rated
  - One-way viewer
  - Flap diameter - 3/4"



### 1759

#### 185° Door Viewer with Privacy Flap

- Certification: Meets ANSI A156.16 for L03223  
 Materials: Brass  
 Finishes: US3, US10A, US26, US26D  
 Notes:
  - Requires 9/16" (14 mm) hole for viewer
  - For doors 1-3/8" (35 mm) to 2-1/8" (54 mm) thick, adjustable
  - Tamper resistant
  - 90 minute fire-rated
  - One-way viewer
  - Flap diameter - 3/4"



### 1765

#### Privacy Flap for Use with Hager 115° Door Viewer (1755)

- Materials: Brass  
 Finishes: US3, US26, US26D  
 Notes: Flap diameter - 3/4"



### 1766

#### Privacy Flap for Use with Hager 185° Door Viewer (1756)

- Materials: Brass  
 Finishes: US3, US10A, US26, US26D  
 Notes: Flap diameter - 3/4"





## RESIDENTIAL



### 208

#### Kick Down Door Stop

- Base: 1-5/8" x 1-7/8" (41 mm x 48 mm)  
 Arm: 3-7/8" (98 mm)  
 Materials: Aluminum alloy  
 Finishes: US3, US4, US5, US10A, US15A, US15, US26, US26D, ABA  
 Fasteners: Three (3) #6 x 3/4" FPHWS  
 Notes:
  - Poly bag (1 each) with screws
  - Provides simple hold and release with a touch of the foot
  - 3" (76 mm) max door to floor clearance



### 209

#### Floor Door Stop

- Height: 1-1/4" (32 mm)  
 Base Diameter: 1-3/32" (28 mm)  
 Tip Diameter: 19/32" (15 mm)  
 Materials: Zinc alloy  
 Finishes: US3, US4, US5, US10A, US15A, US15, US26, US26D, ABA  
 Fasteners: One (1) #8 x 2" FPHWS  
 Notes:
  - Non-marking white tip
  - 3/8" (9.5 mm) max door to floor clearance



### 210

#### Rigid Door Stop

- Projection: 3" (76 mm)  
 Tip Diameter: 11/16" (17.5 mm)  
 Base Diameter: 1" (25 mm)  
 Materials: Zinc alloy  
 Finishes: US3, US19, US26, AN  
 Fasteners: #8 x 5/8" thread  
 Notes: Bumper made of rubber



### 211

#### Flexible Door Stop

- Projection: 3-1/8" (79 mm)  
 Tip Diameter: 9/16" (14 mm)  
 Base Diameter: 1" (25 mm)  
 Materials: Steel  
 Finishes: US3, US4, US5, US10A, US10R, US15A, US15, US26, US26D, ABA  
 Fasteners: One (1) #8 x 3/4" PPHWS  
 Notes:
  - Bumper made of rubber
  - Flexible spring



**RESIDENTIAL**



**212**

**Hinge Pin Door Bumper**

- Materials: Zinc alloy base  
 Finishes: US3, US4, US5, US10A, US10R, US15A, US15, US19, US26, US26D, ABA  
 Notes:
  - Non-marking white plastic tip
  - For use where standard door stops are not desirable
  - For use with narrow trim
  - Adjustable from 80 degrees to 120 degrees
  - For use with residential hinges
  - Works with 1/4" (6 mm) hinge pins



**1412**

**Door Guard**

- Arm Length: 4 (102 mm)  
 Materials: Zinc alloy base  
 Finishes: U3, US10A, US15A, US15, US26, US26D, ABA  
 Fasteners: Seven (7) #6 x 3/4" FPHWS  
 Notes:
  - Provides extra security from inside door
  - Limits door opening when latch is thrown
  - Poly bag (1 each) with screws



**1413**

**Flush Bolt**

- Faceplate: 3/4" x 6" (19 mm x 181 mm)  
 Strike: 7/8" x 1-3/4" (22 mm x 45 mm)  
 Bolt Diameter: 1/2" (13 mm)  
 Bolt Throw: 15/16" (24 mm)  
 Bolt Backset: 7/16" (11 mm)  
 Materials: Brass faceplate with steel components  
 Finishes: US3, US4, US5, 10A, 10R, US15A, US15, US26D, ABA, AN  
 Fasteners: Four (4) #6 x 3/4" FPHWS  
 Notes:
  - Poly bag (1 each) with strikeplate and screws
  - Square corners



**1414**

**Flush Bolt**

- Faceplate: 3/4" x 6" (19 mm x 181 mm)  
 Strike: 7/8" x 1-3/4" (22 mm x 45 mm)  
 Bolt Diameter: 1/2" (12.7 mm)  
 Bolt Throw: 15/16" (24 mm)  
 Bolt Backset: 7/16" (11 mm)  
 Materials: Brass faceplate with steel components  
 Finishes: US3, 10R, US15, US26D  
 Fasteners: Four (4) #6 x 3/4" FPHWS  
 Notes:
  - Poly bag (1 each) with strikeplate and screws
  - Rounded corners







## RESIDENTIAL



### 1415

#### Strike Plate

- Size: 7/8" x 1-3/4" (22 mm x 45 mm)  
 Finishes: US3, US10A, US15A, US15, US26D  
 Fasteners: Two (2) #6 x 3/4" FPHWS  
 Notes:
  - For use with 1413 and 1414 Flush Bolts
  - Packed (1 each) with Poly bag and screws



### 1416

#### Single Route Flush Bolt

- Faceplate: 3/4" x 7-1/8" (19 mm x 181 mm)  
 Strike: 21/32" x 1-1/2" (17 mm x 38 mm)  
 Bolt Diameter: 5/16" (8 mm)  
 Bolt Throw: 7/8" (22 mm)  
 Bolt Backset: 3/8" (9.5 mm)  
 Materials: Brass faceplate with steel components  
 Finishes: US3, US4, US5, US10A, US10R, US15A, US15, US26, US26D, ABA  
 Fasteners: Two (2) #8 x 1-1/2" FPHWS and two (2) #6 x 3/4" FPHWS  
 Notes:
  - Poly bag (1 each) with strikeplate and screws
  - Rounded corners
  - Single route for quick and simple door prep



### 1418

#### Flush Bolt with Extension Rod

- Faceplate: 23/32" x 7-3/8" (18 mm x 187 mm)  
 Strike: 5/8" x 1-1/2" (16 mm x 38 mm)  
 Bolt Diameter: 5/16" (8 mm)  
 Bolt Throw: 3/4" (19 mm)  
 Bolt Backset: 3/8" (9.5 mm)  
 Extension Rod Length: 16" (406 mm)  
 Materials: Brass faceplate with steel components  
 Finishes: US3, US4, US5, US10A, US10R, US15A, US15, US26, US26D, ABA  
 Fasteners: Two (2) #8 x 1-1/2" FPHWS and two (2) #6 x 3/4" FPHWS  
 Notes:
  - Poly bag (1 each) with strikeplate and screws
  - Rounded corners
  - Single route for quick and simple door prep



### 1419

#### Flush Bolt with Extension Rod

- Faceplate: 3/4" x 7-1/8" (19 mm x 181 mm)  
 Strike: 5/8" x 1-1/2" (16 mm x 38 mm)  
 Bolt Diameter: 5/16" (8 mm)  
 Bolt throw: 3/4" (19 mm)  
 Bolt Backset: 5/16" (8 mm)  
 Materials: Brass faceplate with steel components  
 Fasteners: Two (2) #8 x 1-1/2" FPHWS and two (2) #6 x 3/4" FPHWS  
 Finishes: US3, US4, US10R, US15, US26, US26D, ABA, Single route  
 Notes: for quick and simple door prep



**RESIDENTIAL**



**1439 | BL6439**

**Magnetic Catch - Light Weight**

- Catch: 1-1/16" x 2" (27 mm x 51 mm)  
 Strike: 7/8" x 1" (22 mm x 25 mm)  
 Materials: Tan plastic case  
 Fasteners: Two (2) #6 x 1/2" TPHWS and one (1) #4 x 1/2" FPHWS  
 Notes:
  - Poly bag (1 each) with screws
  - Double-sided magnet, self-aligning, 6 lb. pull
  - Self aligning magnet insures maximum pull
  - BL6439 is Builder's Pack Poly bag (1 each) with screws



**1446**  
**Light Weight Ball Catch**

- Faceplate: 1" x 2-1/4" (25 mm x 57 mm)  
 Strike: 1-3/8" x 2-1/4" (35 mm x 57 mm)  
 Hole Diameter: 1" (25 mm)  
 Hole Depth: 1-1/4" (32 mm)  
 Materials: Steel housing, brass strike, plated steel ball  
 Finishes: US3, US4, US5, US10A, US10R, US15A, US15, US26, US26D  
 Fasteners: Four (4) #6 FPHWS  
 Notes:
  - Designed for use on cabinets and light weight doors
  - Not intended for heavy weight applications
  - Ball adjusts in and out for various door and frame clearances
  - Poly bag (1 each) with steel screws



**1447**  
**Light Weight Ball Catch**

- Strike: 1-3/8" x 2-1/4" (35 mm x 57 mm)  
 Faceplate: 1" (25 mm) diameter  
 Hole Diameter: 15/16" (24 mm)  
 Hole Depth: 1-1/4" (32 mm)  
 Materials: Zinc housing, brass strike, plated steel ball  
 Finishes: US3, US4, US5, US10A, US10R, US15A, US15, US26, US26D  
 Fasteners: Two (2) #6 FPHWS  
 Notes:
  - Designed for use on cabinets and light weight doors
  - Not intended for heavy weight applications
  - Ball adjusts in and out for various door and frame clearances
  - Poly bag (1 each) with steel screws





## RESIDENTIAL



### **1448** **Strike Plate**

Size: 1-3/8" x 2-1/4" (35 mm x 57 mm)  
 Material: Brass  
 Finishes: US3, US4, US5, US10A, US10R, US15A, US15, US26, US26D, ABA  
 Fasteners: Two (2) #6 FPHWS  
 Notes: For use with 1446 and 1447 ball catches



### **1449** **Drive In Ball Catch**

Faceplate: 1" (25 mm) diameter  
 Hole Diameter: 15/16" (24 mm)  
 Hole Depth: 1-1/4" (32 mm)  
 Materials: Zinc housing, plated steel ball  
 Finishes: US4  
 Packaging: 100 per box  
 Notes:
 

- Ball catch designed for use on cabinets and light weight doors
- Not intended for heavyweight applications
- Ball adjusts in and out for various door and frame clearances



### **BL6793** **Pole Sockets**

Outside Diameter: 2-7/16" (62 mm)  
 Materials: Steel  
 Notes:
 

- For poles up to 1-3/8" (35 mm) diameter
- Flange design prevents accidental knock out of pole
- Poly bag (2 each) with screws



### **BL6794** **Pole Sockets**

Outside Diameter: 2-3/16" (56 mm)  
 Materials: Plastic  
 Notes:
 

- For poles up to 1-3/8" (35 mm) diameter
- Poly bag (2 each) with screws



## RESIDENTIAL



### 6601

#### Handrail Bracket

Projection:

3-1/4" (82.5 mm)

Base to Center of Rail:

2-3/4" (70 mm)

Materials:

Cast aluminum

Finishes:

US3, US4, US5, US10A, US10R, US15, US15A, US26, US26D, ABA

Fasteners:

Three (3) #8 x 1-1/2" OPHWS and two (2) #8 x 3/4" OPHWS

Notes:

Poly bag (1 each) with wood screws and rail bracket



### BL6610

#### Coat and Hat Hook

Upper Projection:

2-13/16" (71 mm)

Lower Projection:

1-5/16" (33 mm)

Material:

Cast steel

Finishes:

US3, US4, US5, US10A, US15A, US15, US26, US26D, ABA

Fasteners:

Two (2) #6 x 3/4" FPHWS

Notes:

- Poly bag (1 each) with screws
- Builder's pack



Page deliberately left blank.

